

## Price List of Parts

In ordering specify lamp number

	Cap Lamps Doz.	Hand Lamps Doz.
2 RAKING WIRE . . . . .	.35	.80
3 LID OF WATER TANK . . . . .	.60	.60
4 WATER TUBE . . . . .	.50	.75
5 BURNER TUBE . . . . .	.25	.25
7 BURNER (lava) . . . . .	.25	.25
9 LARGE FELT . . . . .	.35	.35
10 STRAINER . . . . .	.25	.50
11 HOOK . . . . .	.35	.35
12 RUBBER GASKET . . . . .	.35	.50
14 STRAINER CLIP . . . . .	.10	.15
SPARKING METAL . . . . .	25c Doz.	
SPRINGS . . . . .	20c Doz.	
REINFORCING SHELL . . . . .	75c Doz.	
HOOK AND BAIL CHAIN . . . . .	1.00 Doz.	

### REFLECTORS

The reflectors illustrated on the lamps are No. 6 and No. 5 N. P.

We can also furnish the following styles:

	Cap Lamps Doz.	Hand Lamps Doz.
No. 3 Deep 3" diameter N. P. . . . .	2.40	2.65
No. 4 Deep 2" diameter " . . . . .	1.20	1.45
No. 5 Brass (No. 6 type) 3" diam. . . . .	2.00	2.25
No. 5 Brass, nickel plated . . . . .	2.40	2.65
No. 6 Polished brass . . . . .	.35	.60
No. 6 Polished brass, nickel . . . . .	.50	.75
No. 6 Hood . . . . .	1.80	
No. 7—2½" diam. Polished Brass . . . . .	1.50	
No. 8—2¾" " " " . . . . .	1.75	
Brush Burner Cleaners, 60 wires . . . . .	10c Ea.	
Burner Reamers . . . . .	25c Doz.	

### CARBIDE CANS

No. 17 Capacity 2 pounds . . . . .	2.40
No. 18 " ½ lb., hinged top . . . . .	1.50
No. 19 " ½ lb., ½" screw top . . . . .	1.25
No. 20 " ½ lb., slid. top . . . . .	.80
No. 21 " ½ lb., 1¼" screw top . . . . .	1.50

Burners are carried in stock in following sizes:

No.	0	1	2	3	4
Cu. ft. per hr.	⅛	⅜	½	⅝	¾

In ordering Carbide specify "Miner's Lamp Carbide"

# THE BALDWIN

(THE MINER'S LIGHTING BUG)

## CARBIDE LAMP

FOR

## METAL MINES

Made of  
Drawn Steel

STRONG DURABLE  
PRACTICAL

Every Lamp Guaranteed Satisfactory



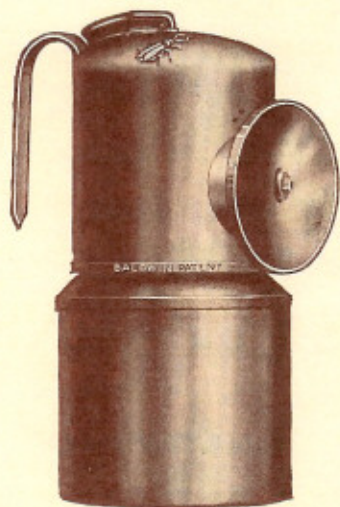
E. D. BULLARD  
268 MARKET ST.  
San Francisco, Cal.

JOHN SIMMONS COMPANY

102-110 CENTRE STREET  
NEW YORK



# Baldwin Half and Full Shift Lamps



No. 54

No.	Burns on One Charge	Weight	Height
49	6 hrs.	14	5½"
54	12 "	15½	6"

These lamps are equipped with hook only which is welded on by the oxyacetylene process, equipped with No. 6 nickel plated screwed reflector, 2 inches in diameter, sparker lighter and steel reinforcing shell.

Price No. 49 . . . . .	<b>\$2.40</b>
Extra Carbide Container . . . . .	<b>.30</b>
Price No. 54 . . . . .	<b>2.65</b>
Extra Carbide Container . . . . .	<b>.35</b>

The principle is the same as sticking a round stick in wet sand and turning it slightly. You make a hole a little larger than the stick. The raking wire plays the part of the stick and the slacked carbide, the wet sand. The slacked carbide acts as a sponge or a perforated tube, and the water seeps through it and is evenly distributed to the fresh carbide. There is no possibility of flooding the carbide chamber and every cubic inch of gas is used. If even the merest fraction of a cubic inch more gas is generated than is required by the burner, instead of being wasted the excess gas pressure forces the water back up the tube and holds it in check until it is required. Thus uniform pressure is maintained which insures an even steady flame at all times.

The illustrations show you the appearance of the lamps, but they cannot show you the strength, serviceability and efficiency that is built into each lamp. It will be necessary to see and examine the lamps for this. One day's use will convince you and we suggest that your next requisition calls for one or two of these steel lamps.

**Get a Baldwin and you are sure of a good lamp—our guarantee of satisfaction to the user is back of every Baldwin Lamp.**

Special reflectors—hanging attachment, hooks, etc., furnished on specification.

Our No. 1 burner is furnished on stock lamps; if any other size is wanted it will be furnished without additional charge.





**T**HE lamps illustrated in the folder are made of heavily tinned drawn steel, which will stand hard service—extra strong in places where the most strain will come—screws are almost double the weight of those on our No. 34 type—the hooks are welded by the oxyacetylene process, which makes them part of the body of the lamp itself. The reflectors screw on, and are strongly reinforced with a drawn steel shell, making an extremely strong and durable lamp.

There are no complicated parts to get out of order or to lose on a Baldwin, and all parts are readily accessible for cleaning when necessary. Containers may be had holding charges from 6 to 12 hours, so that refilling is unnecessary, unless a lighter lamp is desired.

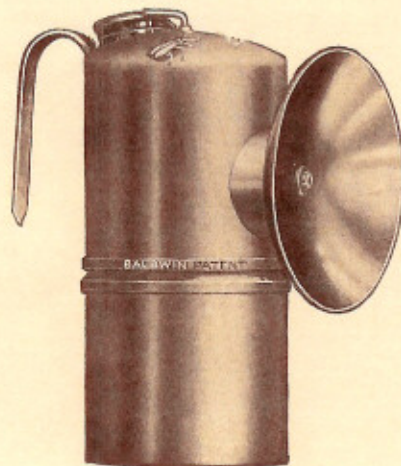
These lamps are built in accordance with suggestions received from practical men in metal mines—men right on the ground, and the lamps have received their stamp of approval. We never sell experimental lamps. They are tried and proven before being offered to you.

Though different in appearance than the Baldwin Pit Lamps, these steel lamps operate under the well-known Baldwin Patented method of automatic water feed, the only water feed which has stood unequalled for over eight years, and the only practical method under which a carbide lamp can operate successfully.

As the Baldwin feed is automatic, the amount of water fed to the carbide is determined by the gas pressure itself which checks or holds the water in reserve. There is no regulating necessary—the Baldwin works without watching. Your men can give all their attention to getting out ore—the time that would be wasted in fussing with valve regulated lamps is thus saved.

The regulating feed theory sounds very well, but it does not work out in practice. About every ten minutes it requires attention if the miner is to get any thing like a uniform light. With the Baldwin automatic feed lamp, after it has been burning about 15 minutes the light will die down, then it is necessary to turn or rotate the raking wire once or twice and after that the lamp will not require attention for hours.

## Baldwin Half and Full Shift Lamps



No. 50

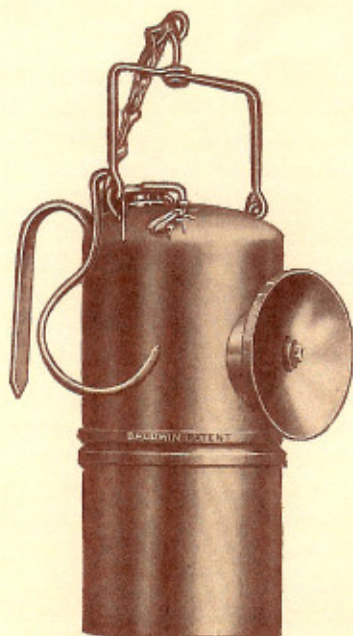
No.	Burns on One Charge	Weight	Height
50	6 hrs.	14	5½"
53	12 "	15½	6"

These lamps are equipped with No. 5 nickel plated sparkler reflectors, 3 inches in diameter, which will greatly increase the light and project it over a larger area.

Price No. 50 . . . . .	\$2.50
Extra Carbide Container . . . . .	.30
Price No. 53 . . . . .	2.75
Extra Carbide Container . . . . .	.35



## Baldwin Half and Full Shift Lamp



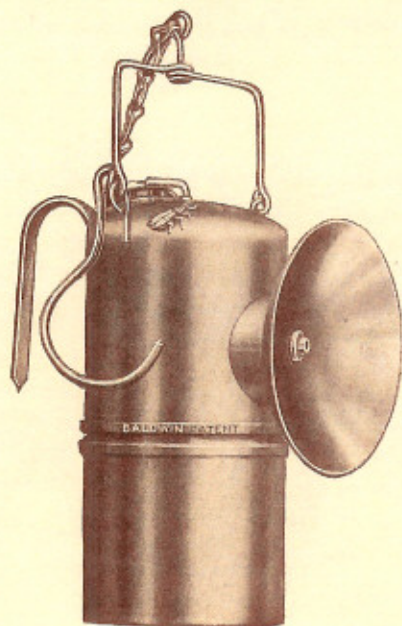
No. 51

No.	Burns on One Charge	Weight	Height
51	6 hrs.	14	5½"
56	12 "	15½	6"

Both these lamps are equipped with No. 6 nickel plated sparker reflectors, and hook and bail chain. This hook is preferred by many miners as it will permit of the lamp being turned in any direction and also hanging vertically from the wall-timbers, machine or from the side of an ore car.

Price No. 51 . . . . .	<b>\$2.50</b>
Extra Carbide Container . . . . .	.30
Price No. 56 . . . . .	<b>2.75</b>
Extra Carbide Container . . . . .	.35

## Baldwin Half and Full Shift Lamp



No. 52

No.	Burns on One Charge	Weight	Height
52	6 hrs.	14½	5½"
55	12 "	16	6"

Similar to Nos. 51-56 but equipped with No. 5 nickel plated sparker reflectors, 3" in diameter, and the hanging attachment.

Price No. 52 . . . . .	<b>\$2.60</b>
Extra Carbide Container . . . . .	.30
Price No. 55 . . . . .	<b>2.85</b>
Extra Carbide Container . . . . .	.35