

CATALOGUE A-2

# PRATT-GILBERT COMPANY

MINE, MILL  
AND SMELTER MACHINERY  
AND SUPPLIES, AND  
HARDWARE

ALSO

Dealers and Jobbers of IMPLEMENTS  
AND VEHICLES



SOUTH CENTRAL AVE.  
FROM MADISON TO JACKSON STREET  
PHOENIX, ARIZONA

Copyright 1918

R. R. Donnelley & Sons Co.

System of figure numbering  
used in this Catalogue  
Patented June 11, 1912

Compiled, printed and bound by  
R. R. Donnelley & Sons Company  
Plymouth Court, Chicago, Illinois

# ORE AND BUCKET CARS

## STANDARD ORE CARS

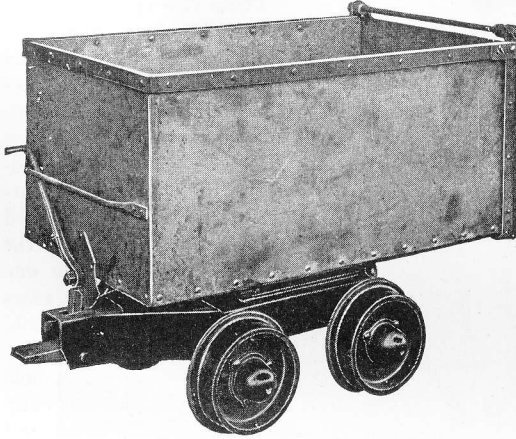


Fig. 18711A

In the construction of these mining cars, care has been exercised to build them so as to obtain the best possible results for every purpose. Particular attention has been given to the proper distribution of weight. They are designed according to practical ideas, and built of the best materials by skilled workmen. The beds are made of the very best quality of sheet steel and the wheels are chilled cast iron and are equipped with a self-oiling, dust-proof caps. All other parts are made of forged steel or iron.

These cars are all provided with a turntable, so they can be dumped at either side or end. The cars carried in stock are for 18-inch track but they can be furnished for any gauge of track desired.

Cars are built of any required capacity or style, and estimates will be promptly furnished upon application.

No.	SIZE OF BOX			THICKNESS OF STEEL SIDES	OF STEEL BOTTOM	Size Axles Inches	Size Wheels Inches	Cap. Cubic Feet	Weight Pounds	PRICE, EACH	
	Length Inches	Width Inches	Depth Inches							With Plain Bearings	With Hyatt Roll Bearings
0	40	22	19	No. 16	.....	1 1/4	8	10	250	....	....
1	44	24	20	" 14	No. 12	1 1/4	10	13	375	....	....
2	44	24	20	" 14	" 12	1 1/4	10	13	450	....	....
3	48	24	20	" 10	" 8	1 1/4	10	14	550	....	....
4	48	24	20	3/16 in.	1/4 in.	1 1/2	10	14	600	....	....
5	48	24	24	3/16 "	1/4 "	1 1/2	10	16	650	....	....
6	48	30	24	1/4 "	1/4 "	1 1/2	10	20	700	....	....
7	54	30	24	1/4 "	1/4 "	1 3/4	12	23	900	....	....
8	60	30	30	1/4 "	1/4 "	2	12	27	1100	....	....

Nos. 2 and 3 have false bottoms.

## BUCKET CARS

### WOOD TOP CAR

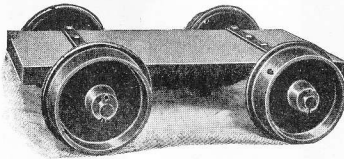


Fig. 18711B

### IRON TOP CAR

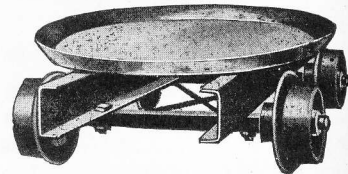


Fig. 18711C

Diameter of Wheels .....	inches	6	8	10
Gauge .....	"	18	18	18
Price, Wood Top .....	each	....	....	....
" Iron .....	"	....	....	....



## TRUAX ORE CARS

## AUTOMATIC ROTARY DUMP CARS

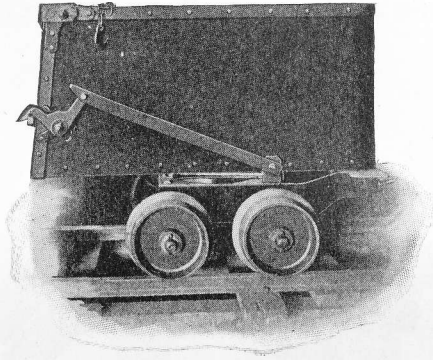


Fig. 17780A

Truax Automatic Cars are perhaps the best in the market for cage use, as the two malleable iron door catches cling tightly if struck when car is going up loaded, thus providing a double factor of safety as compared with a single rod lock. Wedge and chain are attached to do away with danger of accidental unlocking.

To meet cage requirements any of these cars may be shortened 4 inches in length over all without lessening the capacity.

When ordering cage cars, state permissible width and length over all and method of locking car on cage.

—DIMENSIONS OVER ALL—				—DIMENSIONS OVER ALL—			
Size No.	Height above Top of Rail Inches	Width Inches	Length Inches	Size No.	Height above Top of Rail Inches	Width Inches	Length Inches
14	35	30	53	19	42	36	63
17	38	30	57	21	48	36	63

Number of Car	Capacity Cubic Feet	Thickness of Steel in Sides Inches	Thickness of Steel in Bottom Inches	Shipping Weight Pounds	Price Each
14 A	13	No. 12	No. 8	470	.....
14 B	13	12	$\frac{3}{16}$	490	.....
14 C	13	10	$\frac{1}{4}$	535	.....
14 D	13	$\frac{3}{16}$	$\frac{1}{4}$	580	.....
17 A	16	No. 12	$\frac{3}{16}$	540	.....
17 B	16	10	$\frac{1}{4}$	570	.....
17 C	16	$\frac{3}{16}$	$\frac{1}{4}$	660	.....
19 A	22 $\frac{1}{2}$	No. 10	$\frac{3}{16}$	780	.....
19 B	22 $\frac{1}{2}$	10	$\frac{1}{4}$	820	.....
19 C	22 $\frac{1}{2}$	$\frac{3}{16}$	$\frac{1}{4}$	875	.....
19 D	22 $\frac{1}{2}$	$\frac{1}{4}$	$\frac{1}{4}$	950	.....
21 A	28	No. 10	$\frac{1}{4}$	900	.....
21 B	28	$\frac{3}{16}$	$\frac{1}{4}$	950	.....

Track gauge 18 inches unless otherwise ordered.

NOTE.— Sizes up to and including 16 cubic foot are equipped with 10-inch chilled wheels, capable of sustaining any load. Larger sizes have 12-inch heavy self-oiling wheels. At a cost of only 3.00 extra per car the wheels may be equipped with caps threaded on hubs, for the use of oil or grease. Customers using cup grease report the cars needing attention only once a week. Any special wheels may be specified and we will attach same cheerfully.

Present prices are obtainable upon application.

# Pratt-Gilbert Company

## ORE BUCKETS

No. 1



Fig. 17760A

No. 2



Fig. 17760B

CENTER SWING

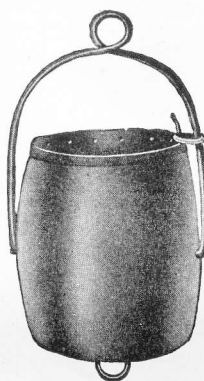


Fig. 17760C

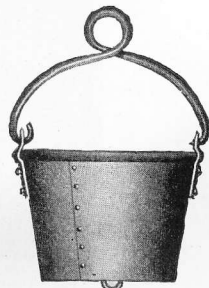
FOR WINDLASSES  
Nos. 9 AND 9½

Fig. 17760D

### Nos. 1, 2 AND CENTER SWING

No.	Height Inches	DIAMETER, INCHES			Number of Steel	CAPACITY		Weight Pounds
		Top	Center	Bottom		Cubic Feet	Average Ore Pounds	
0	14	16	18	13	20	2	....	33
1	30	21	24	17	9	6½	750	140
2	30	21	24	17	11	6½	750	125
3	32	24	27	21	8	9	1100	195
4	37	28	34	23	¼	15	1700	400
5	37	24	28	22	¼	11	1300	350
10	40	27	32	23	¼	15½	1800	400
11	48	26	31	22	¼	17½	2100	425

Unless otherwise ordered, bails are made in style 1 for Nos. 1 and 2 buckets, and in style 2 for larger sizes. The bottoms are dished so that the ring to which the dumping chain is attached does not prevent the bucket from standing upright.

### Nos. 9 AND 9½

#### FOR WINDLASSES

Number	Height Inches	Diameter Top Inches	Diameter Bottom Inches	Number of Steel	Capacity Cubic Feet	Average Ore Pounds	Weight Pounds
9	15	19	14	16	2	250	35
9½	23	22	17	14	3	375	55



**PROSPECTORS' HAMMERS, PICKS AND MINERS' SUPPLIES**

**PROSPECTING HAMMERS  
No. 311**

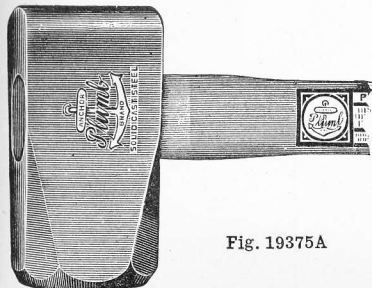


Fig. 19375A

Highly polished; packed one-third dozen in a paper box.

No.	Size	WEIGHT		Price per Doz.
		Pounds	Ounces	
311	1	1	6	.....
312	2	1	12	.....

**MINERS' GOLD WASHING PANS  
No. E-1650**

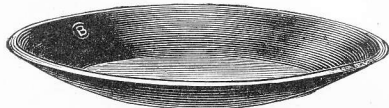


Fig. 19375D

Made of copper in sizes as listed below.

Diameter..... inches	12	16
Depth.....	2	2½
Price..... each	.....	.....

**No. E-1655**

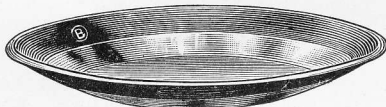


Fig. 19375E

Made of steel with copper bottom; 16 inches in diameter; 2½ inches deep.

Price..... each	.....
-----------------	-------

**PROSPECTING PICKS**

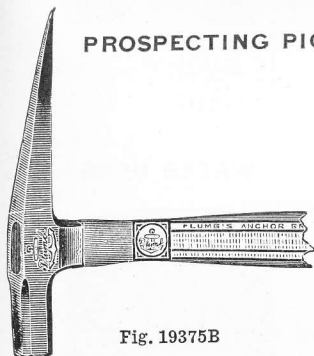


Fig. 19375B

Highly polished; packed one-half dozen in a paper box.

No.	Size	WEIGHT		Price per Doz.
		Pounds	Ounces	
470	1	1	8	.....
471	2	1	8	.....

**MINERS' CANDLESTICKS**

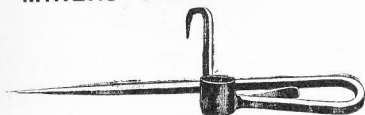


Fig. 19375C

Size of candlestick measures from hook to point; packed one dozen in a box.

Size..... inches	5	6½	7
Price..... per dozen	.....	.....	.....
Prices upon application.			

**MINERS' CANDLES**



Fig. 19375F

**GRANITE MINING CANDLES**

Size	Ounces per Set	Sets, per Case
Sixes	16	20
"	16	40
"	14	20
"	14	40
Eights	14	40

**EXTRA HARD GRANITE MINING CANDLES**

Sixes	16	20
"	16	40
"	14	20
"	14	40
Eights	14	40

The above packed in layers.  
Prices upon application.



**SAMPLE BAGS, ORE BAGS, ETC.**

REGULAR ORE BAG

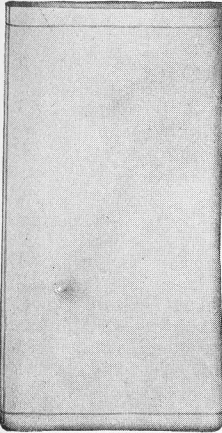


Fig. 19205A

BOLIVIA ORE BAG

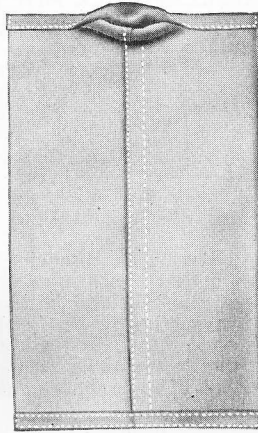


Fig. 19205B

POWDER AND FUSE BAG

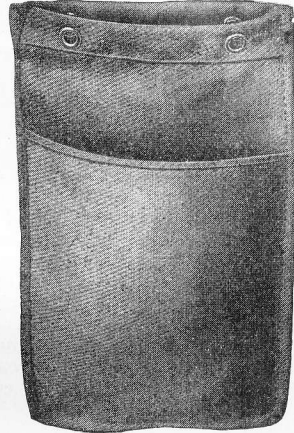


Fig. 19205C

**SAMPLE BAGS**

Size.....	..... inches	12x7	14x9
Weight.....	..... ounces	8	8
Price, Duck, Heavy Drawstrings.....	..... per thousand	.....	.....

**REGULAR ORE BAGS**

Size.....	..... inches	17x12	28x17
Weight.....	..... ounces	8	10
Price, Duck.....	..... per thousand	.....	.....

**EXTRA HEAVY ORE BAGS**

Size.....	..... inches	29x15
Weight.....	..... ounces	18
Price, Duck.....	..... per thousand	.....

These bags are the cheapest in the long run, as they can be used many times.

**BOLIVIA CONCENTRATE ORE BAGS**

Size.....	..... inches	24x14
Weight.....	..... ounces	16
Price, Double Filled Duck.....	..... per thousand	.....

**JUTE ORE BAGS**

Size.....	..... inches	17x28	48x40	14x24
Weight.....	..... ounces	17	17	11
Price.....	..... per thousand	.....	.....	.....

Bags, sizes 17x28 and 48x40, are made from double woven jute, a very heavy material. Extensively used throughout the west and southwest. The 14x24-inch size is of a lighter weight than the other two, but is sufficiently strong for many purposes. These bags are sewed with very heavy thread, built for long service and stand hard usage.

**POWDER AND FUSE BAGS  
WITH POCKET FOR FUSE**

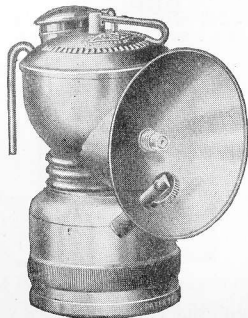
Size.....	..... inches	22x14
Weight.....	..... ounces	16
Price, Double Filled Duck.....	..... per thousand	.....

Printing in one color on one side, 3.00 per thousand. Minimum charge 3.00.



**MINER'S LAMPS**

**No. 125 PIONEER LAMPS**

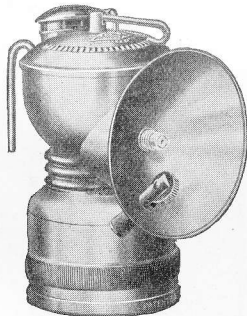


**Fig. 19704A**

Has bottom valve feed, lava burner, rigid, removable reflector, weighs 5½ ounces; height, 4 inches; burns 3 hours on 1 charge. Notches on top of lamp hold valve lever in position. Lamp equipped with spark lighter.

Price, Complete.....each 1.25  
 " Wind Shield..... " .10

**No. 130 PIONEER LAMPS**



**Fig. 19704B**

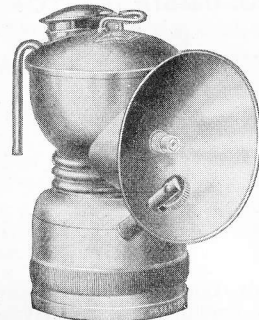
Has no-trouble valve and embodies all advantages of the old reliable Baldwin straight wire feed, plus a strong water valve.

If dirt clogs the water tube simply pump the wire up and down a few times or close the valve by turning lever, right, lamp on your head, pull out the wire, scrape it clean, and slide it back again. It can be done in a minute while lamp is burning.

Also has non-leaking water cap, unbreakable hook, strongly re-enforced on inside and reflector brace soldered to tank.

Price, Lamp only.....each 1.25  
 " Wind Shield..... " .10

**Nos. 131-132 PIONEER LAMPS**



**Fig. 19704C**

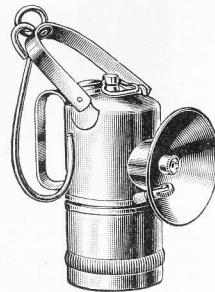
Has patented automatic water feed, lava burner, rigid removable reflector, weighs 5 ounces; height, 4 inches; burns 3 hours on 1 charge.

No. 132, as illustrated, equipped with spark lighter.

No. 131 is the same as No. 132, with the exception of being made with a flat hook and equipped with No. 8 polished brass reflector, 2¾ inches in diameter. Has no sparker.

Price, Complete.....each 1.25  
 " Wind Shield..... " .10

**No. 150 I. T. P. LAMPS**



**Fig. 19704D**

Has rigid removable reflector, lava burner, weight, 12 ounces; height to top of bail, 7 inches; burns 6 hours on 1 charge. Made of seamless drawn brass, heavily nickel-plated, equipped with wind shield and I. T. P. float feed. It burns with an even steady flame and never has to be raked or regulated.

Price, Complete.....each 3.00



## MINERS' LAMPS

## No. 160 I. T. P. LAMPS

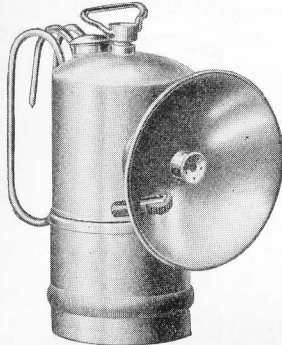


Fig. 19529A

Has float feed, rigid removable reflector, lava burner, weight, 11 ounces, height,  $5\frac{1}{4}$  inches, burns 6 hours on one charge, made of seamless drawn brass, heavily nickel-plated, equipped with wind shield.

Burns steady and even. Never has to be raked or regulated.

Price, Complete.....each 3.00

## No. 203 I. T. P. LAMPS

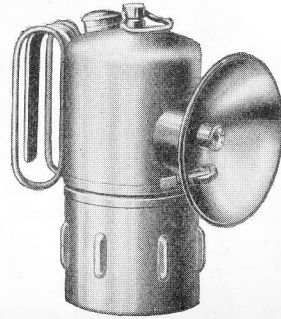


Fig. 19529C

Has float feed, rigid removable reflector, weight, 19 ounces, height,  $6\frac{1}{2}$  inches, burns 10 hours on one charge.

Equipped with hinged handles, sparker lighter, wind shield and one container.

A substantial inspector's lamp that requires no attention while burning and never has to be raked or regulated.

Price, Complete.....each 3.25

## No. 200 I. T. P. TRIP LAMPS

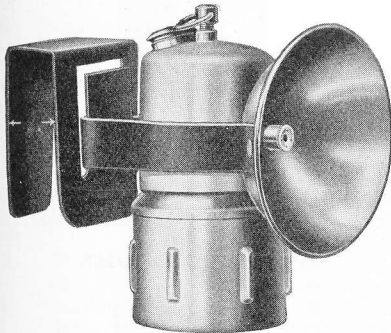


Fig. 19529B

Has deep reflector, lava burner, weight,  $2\frac{1}{2}$  pounds, height,  $6\frac{1}{2}$  inches, burns 10 hours on one charge, equipped with wind shield.

Bracket furnished to fit any steel or wooden mine car. Reflector,  $4\frac{1}{2}$  inches in diameter,  $1\frac{1}{2}$  inches deep, finished in red enamel. Shows a strong red light at great distance without the use of glass.

It is held in place by a 1-inch heavy steel band welded to body of the lamp which slides into a tongue on car bracket.

Price, Complete.....each 5.50

## No. 205 I. T. P. LAMPS



Fig. 19529D

Has float feed, rigid removable reflector, lava burner, weight, 19 ounces, height of lamp,  $6\frac{1}{2}$  inches, height to top of bail,  $9\frac{3}{4}$  inches, burns 10 hours on one charge.

Equipped with sparker lighter and wind shield.

Price, Complete.....each 3.50

# MINERS' LAMPS AND CARBIDE

## No. 210 I. T. P. LAMPS

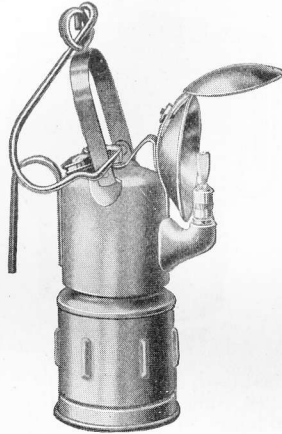


Fig. 19519A

Has float feed, flat flame burner, weight, 2 pounds, height of lamp, 7 inches, height to top of bail, 10 $\frac{1}{4}$  inches, burns 6 $\frac{1}{2}$  hours on one charge when equipped with  $\frac{1}{2}$ -foot burner.

Price, Complete.....each 4.00

## UNION CARBIDE 100-POUND DRUMS

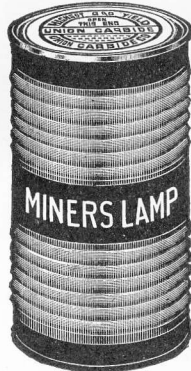


Fig. 19519B

Put up for special use in miner's lamps and packed in gray drums with blue bands.

Weight.....pounds 100

Price.....per pound ....

## UNION CARBIDE 2-POUND CANS



Fig. 19519C

Packed in blue and gray cans consisting of  $\frac{1}{2}$ -inch lump, 24 cans in a case.

Price.....per pound ....

## 10-POUND CANS



Fig. 19519D

Packed in gray cans with blue bands consisting of 1-inch lump, 6 cans in a case.

Price.....per pound ....

## 25-POUND DRUMS



Fig. 19519E

Packed in blue and gray drums for use in miner's lamps, 4 drums in a case.

Price.....per pound ....



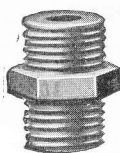
## EXTRA PARTS FOR MINERS' LAMPS BURNERS FOR No. 210 LAMP ONLY

**SLIP SOCKET  
MOUNTING**



**Fig. 19518A**

**BURNER  
PIECE**



**Fig. 19518B**

**SCOTCH THREAD  
MOUNTING**



**Fig. 19518C**

**BURNER  
PROTECTOR**



**Fig. 19518D**

These flat flame burners are for use on the No. 210 lamp shown on another page. Can be supplied in either  $\frac{1}{4}$ ,  $\frac{1}{2}$  or  $\frac{3}{4}$ -foot sizes, and with slip socket or Scotch thread mountings.

### EXTRA PARTS FOR PIONEER LAMPS

Part No.	Name of Part	PRICE, PER	
		For Cap Lamps	Doz. For Hand Lamps
2	Raking Wires.....	.15	.60
3	Lid of Water Tank and Hinges.....	.50	.60
4	Water Tubes.....	.50	.75
5	Burner Tubes.....	.25	.25
7	Burners, All Lava.....	.15	.15
7B	“ Brass Lava.....	.60	.60
8	Sparkers, Complete....	1.80	....
	Sparking, Metal.....	.60	....
	Springs for Sparkers....	.25	.25
	Screw Caps for Sparkers	.25	.25
9	Felts.....	.12	.18
10	Strainers.....	.30	.50
11	Hooks, Flat.....	.80	.80
	“ Round.....	.35	.35
12	Gaskets.....	.20	.75
13	Carbide Containers, N. P....	3.00	4.20
13B	“ “ Brass.....	2.40	....
13C	“ “ “ with Shot-proof Attachment	3.60	....
14	Strainer Clips.....	.10	.15
15	Valves.....	2.00	2.00
16	“ Stems only.....	1.00	1.00
17	Cleaners, Disc Type....	.25	....
62	“ Brush Type, no protecting Case....	.60	....
65	Reamers for Burners....	1.00	....
71	Lamp Holder for Zar.....	1.20	....
72	“ “ “ Steel Lamps....	3.00	....
73	“ “ “ Pioneer Lamps.	3.00	....
75	Clips for Holding Lamp to Cap or Coat.....	1.20	....
	Wind Cap.....	1.20	....

When ordering, specify lamp numbers for which parts are wanted.

### EXTRA PARTS FOR I. T. P. LAMPS

Name of Part	Price per Doz.
Wire Rod.....	.60
Lid of Water Tank and Hinges...	.60
Burner Tubes.....	.25
Burners, All Lava.....	.15
Sparkers, Complete.....	1.80
Sparking Metal.....	.50
Springs for Sparkers.....	.25
Screw Caps for Sparkers.....	.25
Felts.....	.18
Strainers.....	.50
Strainer Clips.....	.15
Gaskets.....	.75
Carbide Containers.....	6.00
Water Tubes.....	.75
Valves, Complete.....	2.00
“ Stems only.....	1.00
Cleaners, Brush Type, No. 62....	.60
Reamers for Burners.....	1.00
Bail and Hook.....	3.50
Hooks, for Bail.....	1.20
Slide Tube and Disc, Float Feed.	3.00
Candle Stick, Heavy.....	3.00
Wind Cap.....	1.20

When ordering, specify lamp numbers.

### CARBIDE CANS

No. of Can	Style and Capacity	Price per Doz.
301	8 ounces, Hinged Top.....	1.50
302	$\frac{1}{2}$ pound, Screw Top.....	1.25
305	$\frac{1}{2}$ “ Friction Bottom, Hinged Top.....	1.80
306	2 pounds, Friction Top with $\frac{1}{4}$ -inch Screw Opening..	2.40
307	$\frac{1}{2}$ pound, Snap Top.....	1.80