

MILBURN HAND LIGHTS

Using ORDINARY Carbide

Milburn Light No. 22

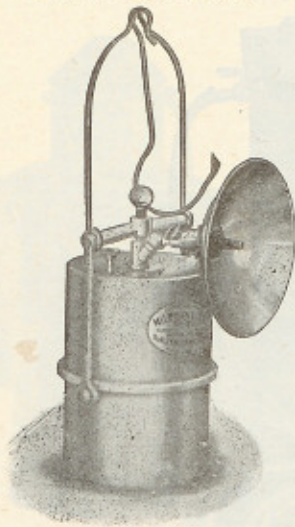


FIG. 3805

Height over bail, 11 in.  
 Diameter, 6 in.  
 Reflector, 6 in.  
 Weight Empty, 3 lb.  
 Carbide Charge, 1 lb.  
 Burning Capacity, 8 to 12 hr.  
 Operating Cost, 1/2c per hr.

THE MILBURN "BUILDER" LIGHT

This contractors' acetylene hand light gives 500 candle-power—an illumination of unusual brilliance, producing working conditions equal to daylight. An area of 40 feet radius is brightly lighted.

A polished aluminum reflector, 10 inches in diameter, concentrates the light, while two swing joints on the reflector arm enable it to be directed at any angle up or down.

The "Builder" Light burns 10 hours without recharging and costs about 10 cents per charge. Only carbide and water are required. The body is fitted with a water tight cover. The construction is extremely simple and durable throughout.

Price .....\$25.00

METAL MINE LAMP NO. 22

This little 100 candle-power lamp is a handy friend on almost any kind of work. Burns 8 hours on a charge. Has a long bail and a hook. Hangs easily at arm's length or hooks anywhere. Strongly made of seamless steel stampings with steel and malleable fittings. May be had with or without reflector, or with special windshield.

The lamp is extremely simple. The water feed is automatic and uniform, generating gas only as needed. It is started and shut off by the needle valve on top. The carbide chamber has a wide mouth for easy charging and dumping. The water chamber has a funnel top, making filling easy, even in the dark. A positive-acting screw cap closes the water inlets and prevents slopping.

Price, without Reflector.....\$ 9.00  
 Price, with Reflector or Windshield..... 10.00

Milburn "Builder" Light

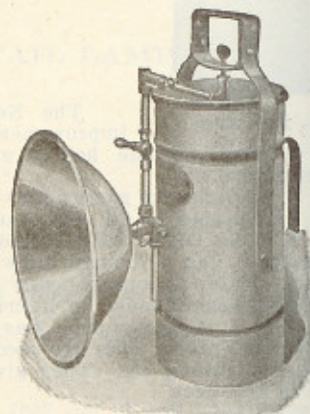


FIG. 3806

500 Candlepower for 10 Hours  
 Body, 7x14 inches.  
 Reflector, 10 inches in diameter.  
 Weight, empty, 11 lb.  
 Carbide charge, 2 1/4 lb.  
 Operating cost, 1c per hour.

**MINER'S CARBIDE**

Miner's Lamp Union Carbide is specially prepared, it is of uniform size and quality and on account of its high gas yield is most economical and satisfactory for use in miner's lamp.

Union Carbide  
Packed in gray drums  
with blue bands  
Capacity 100 lbs.



FIG. 4132

Union Carbide  
Packed in  
blue and gray  
drums  
Capacity 25 lbs.

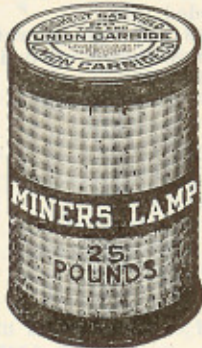


FIG. 4133

Miner's Lamp Union Carbide is packed in 100 and 25-lb. steel drums with screw top to protect it from air and moisture.

The handy 25-lb. Drum enables the dealer to get carbide into the hands of the miner in an unbroken package, with no labor, scooping, weighing or wrapping—with no loss of carbide from spilling or exposure.

100-lb. Drums.....each \$.....  
25-lb. Drums.....each \$.....

Each order to call for at least four drums.

Union Carbide  
Packed in gray cans  
with blue bands  
Capacity 10 lbs.



FIG. 4134

Union Carbide  
Packed in gray  
cans with  
blue bands  
Capacity 2 lbs.



FIG. 4135

Miner's Lamp Union Carbide is also packed in 10-lb. cans (6 cans to case) and 2-lb. cans (24 cans to case). The 10-lb. and 2-lb. cans are equipped with a compression top which can be easily replaced in position, so that the carbide remaining in the can will be thoroughly protected from air and moisture.

Carbide for House Lighting Machine—Contractor's machine and special sizes can be supplied.

10-lb. Cans.....Per case \$.....  
2-lb. Cans.....Per case .....

Sold in case lots only.

Union Carbide is always packed in blue and gray drums or cans.

## BALDWIN'S CARBIDE MINE LAMPS

## NO. 130 CAP LAMP

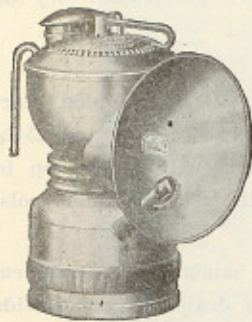


FIG. 4136

All of these lamps can be equipped with the wind shield which screws on to the burner tube.

No. 130—Cap Lamp. Has no-trouble valve and embodies all the advantages of the old reliable Baldwin straight wire feed, plus a strong water valve.

If dirt clogs the water tube, simply rake or pump the raking wire and it is cleared. If wire needs cleaning, pull it out, scrape and put it back. If the valve needs attention it is unscrewed with your fingers—tools are never needed.

Also has non-leaking water cap, unbreakable hook, strongly re-inforced on inside and reflector brace soldered to lamp body.

Made of Brass. Height 4 in. Weight 5½ oz. Burns 3 hours on a charge.

Price, lamp only.....each \$1.00  
Price, wind shield .....each .10

## NO. 160 SUPERINTENDENTS' LAMP

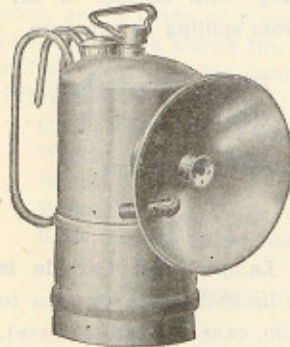


FIG. 4137

Made of brass, polished nickel finish. Height 5¼ in., weight 11 oz. Reflector 3¼ in. in diameter equipped with self-lighter and wind shield.

Operates with the ITP float feed which automatically regulates the production of gas. Requires no hand regulation or adjustment.

Burns 6 hours on a charge.

Price, lamp only.....each \$3.00

## NO. 200 TRIP LAMP

Shows a Red Light

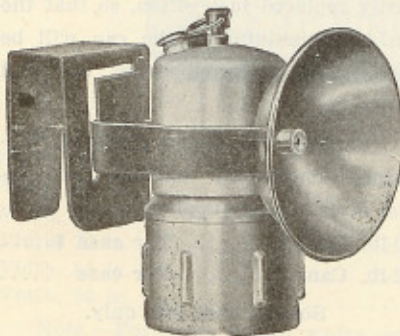


FIG. 4138

Made of steel, tinned. Bracket furnished to fit any steel or wooden mine car. Reflector 4½ in. in diameter, 1½ in. deep, furnished in red enamel. Shows a strong red light at a great distance without the use of glass. It is held in place by a 1-in. heavy steel band welded to body of the lamp which slides into a tongue on car bracket.

Equipped with wind shield. Requires no attention while burning.

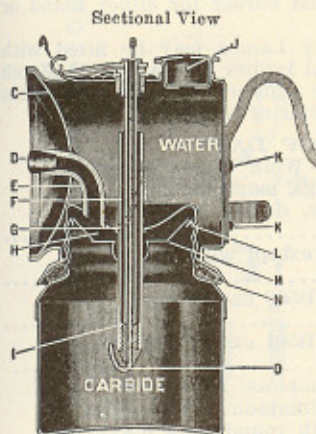
Price, complete .....each \$5.50

In ordering give width of bracket desired.

## JUSTRITE MINERS' CARBIDE LAMPS

WITH LEVER FEED AND LIGHTER ATTACHMENT

16.7 CANDLE POWER  
WEIGHT 5 OUNCES



- A—Lever; regulates water feed
- B—Excess gas escape
- C—German silver reflector; part of lamp
- D—Air hole tip
- E—Gas tube
- F—Water channel
- G—Water intake; slot
- H—Felt gas strainer
- I—Valve seat
- J—Water cap; with air chamber
- K—Rivets, securing hook and clasp; soldered inside
- L—Wire edge; double strength.
- M—Felt Holder
- N—Rubber gasket
- O—Bent wire; turns with lever;

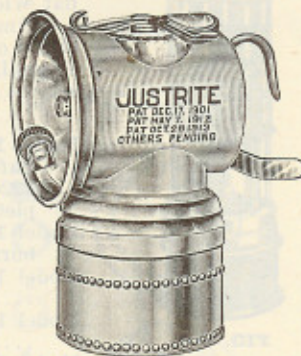


FIG. 4139

Justrite lamps are constructed on scientific principles, original in design and constructed of best materials and workmanship. They are made in two parts—water reservoir and carbide container—drawn from seamless brass. Every lamp is guaranteed perfect.

A new principle in water feed—a valve enclosed in a  $\frac{1}{4}$ -inch tube, so constructed that it increases or decreases the supply of water, enabling the user to burn the flame at any size desired. The valve is operated by a lever sliding back and forth over notches, and held firmly in place by a small spring. This new feed overcomes two serious objections to the wire feed lamps: (1) It will not clog and does not require agitation in order to obtain water as needed. (2) Prevents waste of carbide when through using—all gas is burned and the refuse is slacked.

No. 85.	Polished brass, with No. 77 Carbide Can.....	\$1.00
No. 57.	“ “ “ extra bottom.....	1.10
No. 86.	Nickel plated, “ No. 77 Carbide Can.....	1.25
No. 58.	“ “ “ extra bottom .....	1.25
No. 89.	Gun Metal Finish with No. 77 Carbide Can.....	1.00
No. 59.	“ “ “ “ extra bottom.....	1.10

No matches required to light the “Matchless” Justrite. Cover the reflector with palm of the hand, hold few seconds, then draw hand downward quickly, rubbing over the steel wheel.

This lamp has the new lever feed and a  $2\frac{1}{4}$ -inch polished brass reflector with a sparker attachment. There are other lamps with lighter attachment, but the Justrite is the only one which has the reflector permanently attached. It is part of the lamp and cannot get loose or fall off.

**THE AMERICAN WOLF TYPE MINERS' SAFETY LAMP**

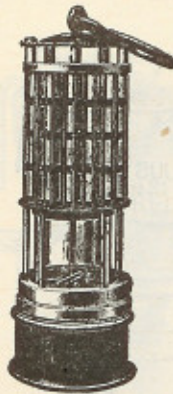


FIG. 4140

The standard lamp for general use burns naphtha as fuel, is fitted with double gauzes, pyro metal or match tape internal igniter, key or magnetic lock, and burner for either round or flat wick.

American Wolf Type Safety Lamps may be fitted with either our No. 122 CV Pyro-Metal Igniter or the No. 119 Match Tape Igniter. Either of these igniters will give excellent service and the selection is a matter of personal choice.

**PRICE LIST OF LAMPS**

Model 1B500. Steel American Wolf Type Miner's Safety Lamp, brass trimmings, magnetic lock, No. 122CV igniter, round burner, double gauze, complete ready for use.....	each \$.....
Model 1B501. Steel. As above except with flat wick burner .....	each \$.....
Model 1B502. Steel. Same as 1B500 except key lock. ....	each \$.....
Model 1B503. Steel. Same as 1B501 except key lock. ....	each \$.....
Model 1B504. Aluminum. Same as 1B502 except made from light weight aluminum alloy. The aluminum lamp is made with round wick burner only .....	each \$.....

Above lamps may be fitted with one or more lenses as desired.

With one lens.....	extra \$.....
With two " .....	" \$.....
With three " .....	" \$.....

NOTE: Lamps are listed with pyro-igniters. Paraffin igniters supplied if specified.

**No. 122CV PYRO-METAL IGNITER—ALSO PARTS**

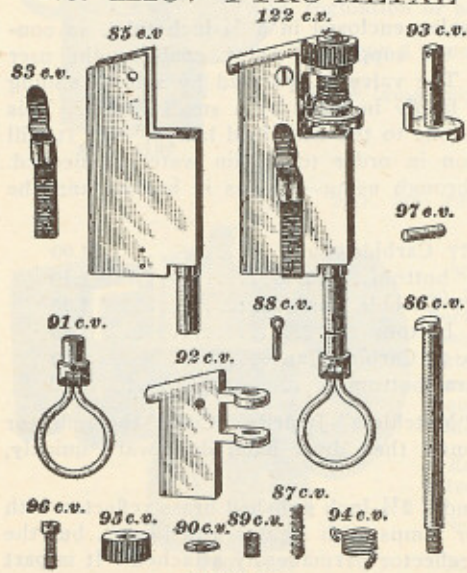


FIG. 4141

No.	Article	Per 100
122CV.	Pyro Metal Igniter, complete .....	\$.....
83CV.	Side Spring .....	\$.....
85CV.	Igniter Case .....	\$.....
86CV.	Operating Spindle. ....	\$.....
87CV.	Tension Spring for Pyro-Metal Bar ...	\$.....
88CV.	Cotter Pin .....	\$.....
89CV.	Adjusting Screw ..	\$.....
90CV.	Washer with square hole.....	\$.....
91CV.	Swivel with screw nut .....	\$.....
92CV.	Main socket .....	\$.....
93CV.	Steel gear .....	\$.....
94CV.	Operating spring ..	\$.....
95CV.	Friction wheel ..	\$.....
96CV.	Fastening screw... ..	\$.....
97CV.	Pyro-Metal bar ...	\$.....
98CV.	Rivets for fastening 83CV to 85CV..	\$.....

NOTE—Standard packages contain 25, 50 and 100 pieces.

AMERICAN WOLF TYPE MINERS' SAFETY LAMP

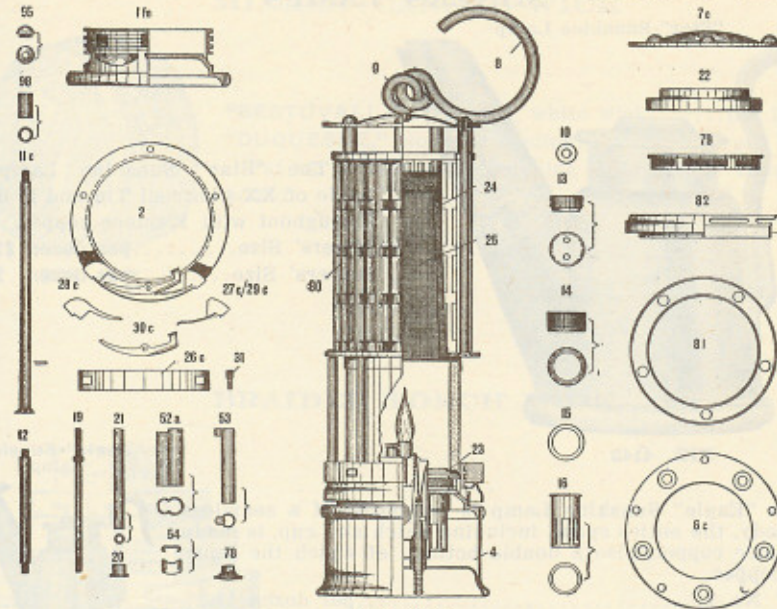


FIG. 4142

LIST OF PARTS

Ref. No.	Parts and Supplies	Ref. No.	Parts and Supplies
1 FN	Top of lamp vessel only.	27-C-29-C	Assembled spring pole with spring.
1 FNC	Top of lamp vessel with Parts 52, 13, 14, 15, 16 and 94-FN assembled.	28-C	Anchor pole.
2	Magnetic lock ring with lock complete.	30-C	Anchor beam.
2-K	Key lock ring with lock complete.	31-C	Pivot screw for anchor.
3	Lock screw for key lock.	32-C	Parts 26-C, 27-C, 28-C and 29-C assembled complete.
4	Lamp vessel only.	52	Burner for round wick.
4-C	Lamp vessel complete, assembled with Parts 1-FNC, 16, 19, 21, 53, 54 and 78. This is the lamp bottom complete.	52F	Burner for flat wick.
6-C	Middle ring.	53	Wick holder for round wick.
7-C	Dome top of lamp.	53-F	Wick holder for flat wick.
8	Lamp hook.	54	Wick stop for round wick.
9	Top dead eye.	54-F	Wick stop for flat wick.
10	Washer for top dead eye.	55	Wick for round burners in 1-lb. rolls, or packages of 1 dozen wicks.
11-C	Top standards with screw heads.	55-F	Wick for flat burners in 1-lb. rolls, or packages of 1 dozen wicks.
12	Glass standards.	78	Thumb screw for wick adjuster.
13	Filling hole stopper.	79	Air admission ring with double gauze.
14	Filling hole bushing.	80	Corrugated shield.
15	Leather washer for filling hole.	81	Top ring for stiffening shield.
16	Cotton spreader.	82	Smooth air ring.
19	Wick adjusting screw.	94-FN	Igniter well.
20	Bushing for tube No. 21.	95	Nut for Part 11-C.
21	Wick adjuster tube.	98	Spacing bushing between 7-C and 81.
22	Gauze ring.	300	Special high grade heat resisting glass globes.
23	Expansion ring.	1200	Regular grade glass globes.
24	Outer gauze, steel.	306	Red glass globes.
24-B	Outer gauze, brass.	307	Asbestos gaskets between globe and lamp frame.
25	Inner gauze, steel.		
25-B	Inner gauze, brass.		
26-C	Plate covering magnetic lock.		

MINERS' LAMPS

"Star" Sunshine Lamp



FIG. 4143

The "Star" Sunshine Lamp is made of XX Charcoal Tin and is lined throughout with 12-ounce copper.  
 Miners' Size.....per dozen \$2.00  
 Drivers' Size.....per dozen 2.50

"Eagle" Sunshine Lamp



FIG. 4144

The "Eagle" Sunshine Lamp is composed of a seamless brass body, the entire spout, including patch and cup, is made of 12-ounce copper, also a double bottom, of which the inner one is copper.

Miners' No. 1.....per dozen \$2.25  
 Miners' No. 2.....per dozen 2.50  
 Drivers' No. 1.....per dozen 3.00

"Star" Tin Lamps



FIG. 4145

The "Star" Lamps are made of XX Charcoal Tin with single or double Spouts and are adapted for burning all kinds of oil.

Miners' No. 1, Double Spout.....per dozen \$1.50  
 Miners' No. 2, Double Spout.....per dozen 1.75  
 Drivers' No. 1, Double Spout.....per dozen 2.00  
 Drivers' No. 2, Single Spout.....per dozen 1.85

"Eagle" Tin Lamps

The "Eagle" Lamps are made of XX Charcoal Tin, with single spout and cup. No. 3 Drivers' has brass collar.

Miners' No. 3.....per dozen \$1.50  
 Drivers' No. 2.....per dozen 1.85  
 Drivers' No. 3.....per dozen 2.50



FIG. 4146

MINERS' CANDLE WICK



FIG. 4147

"BESTOVALL," fine grade, white wick.....per lb. \$0.60  
 "DUQUESNE," No. 2 or medium grade.....per lb. .50  
 Put up in 5-lb. bales, running from 8 to 9 balls to the pound.

BRAIDED TORCH WICK

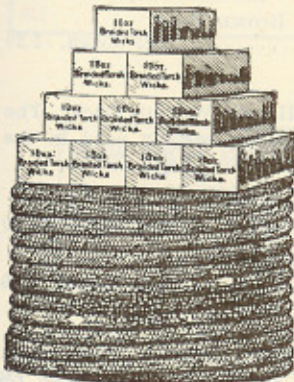


FIG. 4148

$\frac{3}{8}$ -inch diameter .....per lb. \$0.65  
 $\frac{1}{2}$ -inch diameter .....per lb. .65

MINERS' TIME CHECKS



FIG. 4149

Standard size— $1\frac{1}{8}$ -in. diam.,  $\frac{3}{8}$ -in. hole, packed in wood boxes, 1,000 checks each.

Brass .....price per 1,000 \$....  
 Brass plated .....price per 1,000 ....

Checks of other diameters and shapes, also numbered checks can be furnished promptly to order.

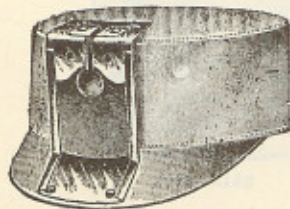


**MINERS' CAPS**

This cap is made of extra heavy 12-ounce duck, double stitched throughout and entirely lined with flannel. The visor is made of heavy material so as not to become affected by water or dampness. They are covered with Heavy Duck or Oil Cloth.

The attachment number 2 used in the construction of this cap is made of XX Tin, interlined with Vulcanized Fibre which will not absorb oil or water. It is attached to the cap so as to insure perfect comfort to the wearer.

No. 400



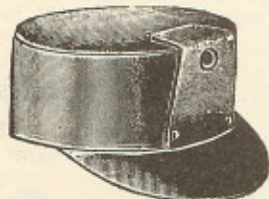
**FIG. 4150**

Our patent is so constructed as to force the lamp directly in front of the cap, no matter what the position of the wearer.

No. 400—2. Extra Heavy White Duck.  
List .....per dozen, \$5.30

No. 400—2. Extra Heavy Brown Duck.  
List .....per dozen, 5.30

No. 65



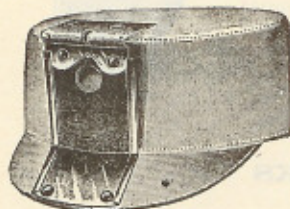
**FIG. 4151**

This Cap is made of Heavy Weight Duck. The Attachment is of Sole Leather, largely used in the Anthracite Coal Fields.

No. 65. Heavy White Duck.  
List .....per dozen, \$5.00

No. 65. Heavy Brown Duck.  
List .....per dozen, 5.00

No. 1200



**FIG. 4152**

This cap is made of heavy weight White Duck and is universally known throughout the mining regions as the No. 9. The attachment is constructed of XX Tin, interlined with vulcanized fibre.

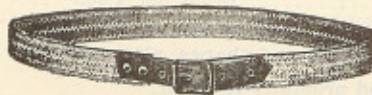
No. 1200—9. Heavy White Duck.  
List .....per dozen, \$5.00

No. 1200—9. Heavy Brown Duck.  
List .....per dozen, 5.00

**MINERS' BELTS**

Made of Heavy Duck, Triple Stitched, with Leather Billets and Clapes securely riveted.

This Belt is more comfortable than a leather belt.



**FIG. 4153**

No. 25. Heavy Canvas White Belts.  
List.....per dozen, \$4.00

No. 26. Heavy Canvas Brown Belts.  
List.....per dozen, 4.00