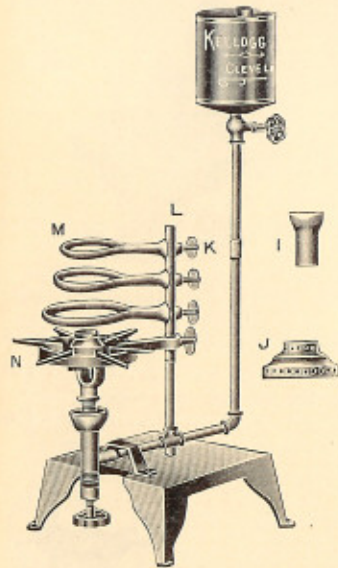
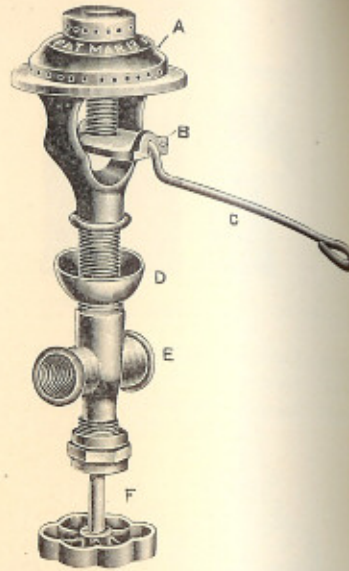


LAMPS



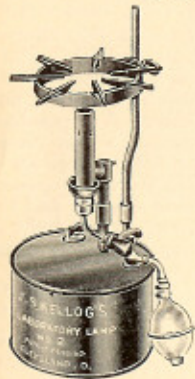
No. 2624



No. 2628

- 2624 Lamps, Kellogg's. For gasoline. Indispensable where a Bunsen Burner flame is required and no gas available. It gives as much heat as several Bunsen Burners, and is better than alcohol lamps. There is no smell, as the gas is consumed as soon as produced, no wick necessary. Complete, as per engraving. \$12.00
- 2626 Burner only, for above lamp. 7.50
- 2628 Lamps, Kellogg's New Vapor Lamp. Can be used in sets of two or more lamps, using the same tank. 3.00
- 2630 Lamps, Kellogg's Gasoline Laboratory Lamp No. 2. This lamp gives a pure blue flame and intense heat. Can be easily and instantly regulated at will. The slide grate allows articles to be placed as near fire as desired. Can be kept hot for use by putting cap on top of burner and turning off part of the force of vapor. 6.00

ADVANTAGES OF KELLOGG'S BURNERS



No. 2630

1. Perfect simplicity and durability; does not get out of order easily.
 2. Cheapness of operation.
 3. Steadiness of flame.
 4. Entire freedom from odor.
 5. Intensity of heat, three to six times that of a Bunsen Burner.
 6. Ease with which the size and intensity of flame can be regulated.
 7. Portability.
 8. It gives either the reducing or oxidizing flame.
 9. It consumes all the carbon, depositing no soot.
- This burner is strongly recommended, not as a make-shift, but as an improvement over anything heretofore presented to the public.

MILBURN LIGHTS

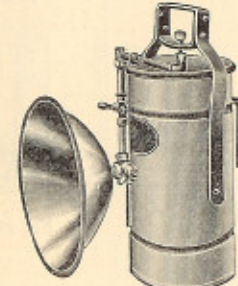
FOR CONTRACTORS, TUNNELS, MINERS, FOUNDRIES, ETC.



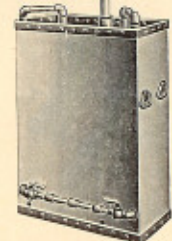
BUILDERS AND EMERGENCY LIGHT



No. 2632



No. 2634



No. 2638

The Milburn Light is an improved gas light, generated from acetylene in so simple and perfect a manner that, to obtain same, it is merely necessary to turn on the tap and apply a light.

It adjusts itself immediately to any size flame, or any reasonable number of burners used, and requires absolutely no attention until burnt out.

The apparatus mainly comprises three parts. An outer tank holding water, and an inner receptacle holding the chemical, and a burner standpipe. The light closely resembles sunlight. It is fifteen times more powerful than coal gas, and is more penetrating and diffusive for the size of flame than any existing light.

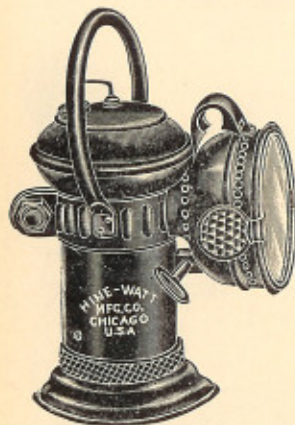
- 2632 50 Candle power, 10 hours. A most convenient hand light. Size, 6x12 inches; weight, 6½ pounds, each. \$13.50
- 2634 500 Candle power, for fire and salvage work. Extra powerful size 7x14 inches. Weight, 10 pounds, each 18.00
- 2636 5,000 to 12,000 candle power, lights 1500 feet. The light of these lamps closely resembles sunlight. Every part is water sealed, making them absolutely safe. Size, 12x36 inches; height, 6 feet, each. 83.00
- 2638 12,000 Candle power, lights 3,000 feet. Same as No. 2636, only with twin cylinders, two storm-proof burners, and two non-tarnishing parabolic reflectors. Size, 12x24x36 inches; height, 6 feet, each 114.00

EXTRA CYLINDERS

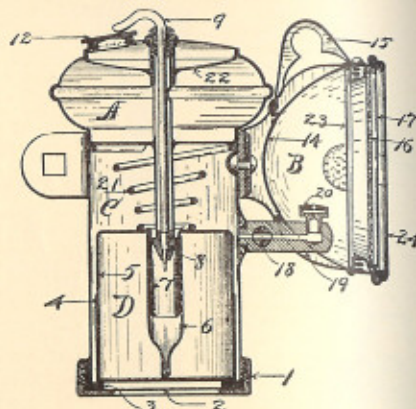
- 2640 Extra cylinder comprises set of trays, inner receptacle, and cover complete, each. 18.00

ACETYLENE LAMPS

FOR ENGINEERS, SURVEYORS, MINERS, CAMPERS, ETC.



No. 2642



No. 2642

Acetylene lamps are cleaner, more convenient, and cheaper to operate than candles or oil lamps. Acetylene light resembles daylight and facilitates a more accurate examination of veins and ores, especially their color. Notebooks, etc., are not soiled by grease nor the air polluted by smoke—in fact, less oxygen is consumed by acetylene lamps than by oil or candles. They will burn in places where candles and oil lamps go out.

COLUMBIA AUTOMATIC ACETYLENE LAMPS

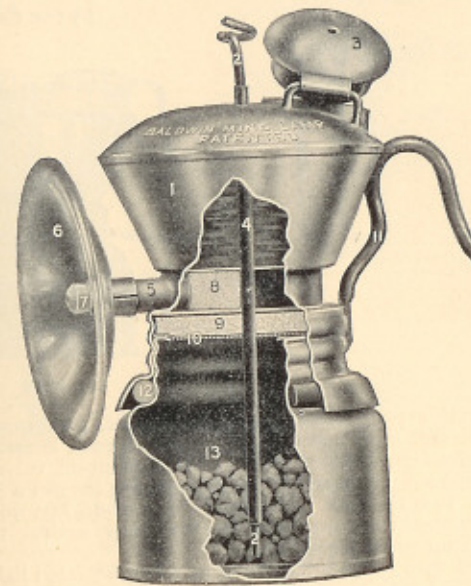
Ideal for mining engineers, superintendents, surveyors, campers, watchmen, bicyclists, etc. Made of heavy brass with gun metal finish and have double convex lens, fishtail or pencil burner (as desired), gas and water valves. Burn five hours on one charge. Enclosed and not affected by strong winds.

2642 Bale Lamp, without Dark Lantern Shutter	\$3.50
Buggy or Bicycle, Bracket extra	.40
Watchman's Dark Lantern with Shutter, and without Colored Side Lights	4.50
Watchman's Lamp, without Shutter and Side Lights	3.50

EXTRA PARTS, PRICES POSTAGE PAID

A. Lamp Body, Complete	\$1.80	Thumb Nut and Bolt	\$0.10
D. Carbide Cup, Complete	.50	B. Head, Complete	1.00
2. Bottom Plate	.10	1. Bottom Cap	.17
5. Carbide Cup Body	.30	3. Rubber Gasket	.10
9. Water Valve	.15	6. Water Distributer	.30
14. Reflector	.30	12. Filler Cap	.10
16. Double Convex Lens	.30	17. Lens Retainer Wire	.10
18. Gas Valve Complete	.40	Gas Valve Stem, Screw and Washer	.25
Extension Base Complete	.45	21. Spiral Spring	.17
20. Burner—Pencil Flame	.17	Buggy Dash Bracket	.40
Burner—Fishtail Flame	.25	Hand Bracket	.70
23. Reflector Retainer Wire	.10	Bracket Extension, no Bolts	.14
Bicycle Bracket	.40		
Front Door without Glass or Retainer Wire	.30		
Screw and Washer for Gas Valve	.10		

BALDWIN ACETYLENE LAMPS



DESCRIPTION OF THE BALDWIN MINE LAMP

We show herewith, a sectional view of the Baldwin Mine Lamp. While at first sight the many parts may lead you to believe that this lamp is rather complicated, a second observation will show that but few of these various parts have to do with the actual working of the lamp. The other parts are not subject to wear nor can they, in any manner, get out of order. There are no springs nor regulating devices to cause trouble. Anyone can successfully operate the Baldwin the first time they try.

Viewed as a whole, the lamp consists of four parts, a carbide container, a water-tank, burner and a wire agitator. A pipe or tube projects from the water-tank, into the carbide container. In this pipe there is a wire agitator. There is just enough free space between the wire agitator and the sides of the tube to permit the proper amount of water to get to the carbide. This wire is also used to free the tube from any stoppage or sediment which might collect in same. This is indicated by the flame burning low. A turn or two of this wire clears the tube and immediately the flame assumes its normal size and the lamp again burns brightly. Sudden jars or a fall will not injure the lamp or affect the light. It will burn perfectly, for a time, if laid on its side or even held in an inverted position.

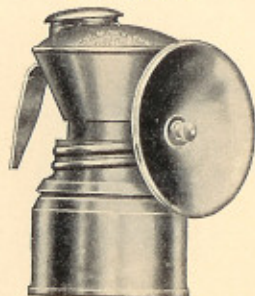
The names of the various parts indicated by numbers above are given below.

No.	Name	No.	Name
1.	Water-tank.	8.	Small Felt.
2.	Raking Wire.	9.	Large Felt.
3.	Cover of Water-Tank.	10.	Wire Gauze.
4.	Water-tube.	11.	Hook.
5.	Burner-tube.	12.	Rubber Gasket.
6.	Reflector.	13.	Carbide Container.
7.	Burner.		

For prices and illustrations of repair parts, page 286.

BALDWIN ACETYLENE LAMPS

STYLE No. 31



No. 2646

STYLE No. 33



No. 2650

2644 Style No. 30. Give 14-18 candle power. Weight, 5 ounces, height, 3 3/4 inches. One extra carbide container with each lamp. \$1.00 While this lamp is fitted with a positive shut-off valve, it operates under the well-known "Baldwin" method, which insures a steady and uniform flame. It is the most substantial valve made, but we do not recommend valve lamps in low mines, as the first blow against the roof will put a valve lamp out of commission.

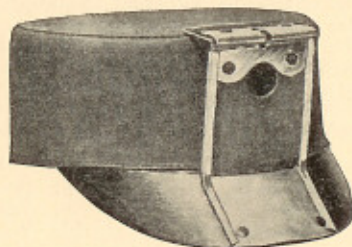
Fitted with No. 2 Reflector when a concentrated light is desired. May be supplied with No. 1 Flat Reflector, if so specified.

2646 Style No. 31. Same as above, but without the positive shut-off valve, the regulation of the water being automatic. Fitted with cap-hook the same as Sunshine Oil Lamps. Each \$1.00

2648 Style No. 32. Same as No. 31, but with the regular cap-hook and steady braces. Fitted with No. 2 Reflectors. Each 1.00

2650 Style No. 33. Same as No. 32, but supplied with No. 1 Flat Reflector, which shields the flame from water dripping from the roof. Each . . . 1.00
Extra carbide containers, each15

If extra carbide containers are not wanted deduct \$0.15 from list price of lamp.



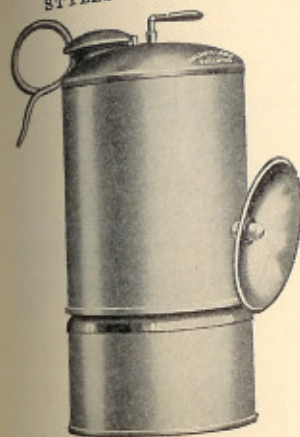
No. 2652

2652 Miner's Canvas Caps. For use with Nos. 30, 32 and 33 lamps. Size 6 3/8 to 7 1/4. Price each25

Write for circulars and quotations upon quantities.

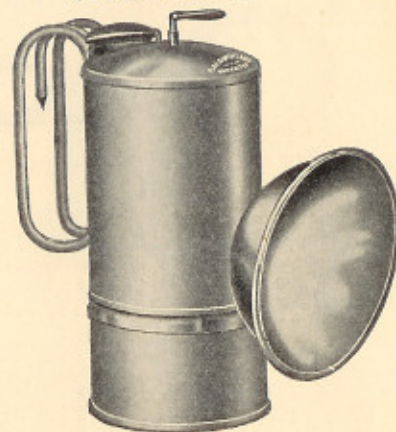
BALDWIN ACETYLENE LAMPS

STYLES 34 AND 35



No. 2654

STYLES 36 AND 38



Nos. 2656-2658

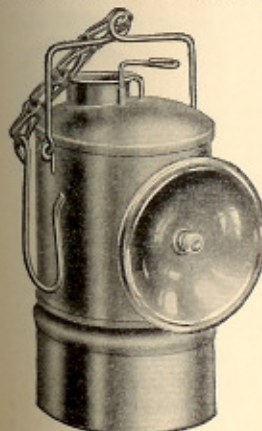
HALF-SHIFT LAMPS

Style No.	Made of galvanized iron.	Burns on One Charge	Weight Charged	Height Inches	Price Each
34		6 hours	11 oz.	6	\$1.25
35		12 hours	15 oz.	6 1/2	1.25

One extra carbide container furnished with each lamp. Extra containers, \$0.30 each.

SUPERINTENDENT'S LAMP

2656 Style No. 36. Burns 6 hours with one charge. Weight, 10 ounces. Height, 6 1/2 inches. Made of galvanized iron. This lamp will throw a strong light over 50 feet. Makes overhead examinations easy. One extra carbide container with each lamp. Price \$2.00
Extra carbide containers, each30
2658 Style No. 38. Same as No. 36 but of brass, nickel-plated. Price 2.00



No. 2660 | STYLE 39

2660 The hook and chain will make it convenient to hang this lamp to rock, timber or candlestick. This lamp is easily carried when climbing ladders. Burns five hours on one charge.

Weight, 4 1/2 ounces. Height, 5 1/2 inches. One extra carbide container with each lamp.

Price \$1.25
Extra carbide containers, each20

BALDWIN ACETYLENE LAMPS

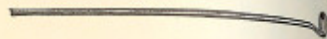
REPAIR PARTS



GASKET FOR LAMPS
Nos. 34, 35, 36, 38 and 39



GASKET FOR LAMPS
Nos. 30, 31, 32 and 33



RAKING WIRE

Gaskets for Lamps, Nos. 34, 35, 36, 38 and 39, per dozen	\$0.75
Gaskets for Lamps, Nos. 30, 31, 32 and 33, per dozen50
Valve Rods for Lamp No. 30, per dozen	1.00
Raking Wires for Nos. 31, 32 and 33, per dozen35
Raking Wires for Nos. 34, 35, 36, 38 and 39, per dozen80



SCREEN



FELT



SMALL FELT

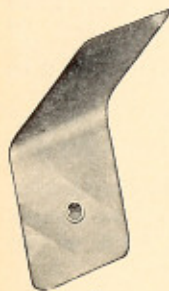


BURNER

Screen, per dozen	\$0.25
Felt, per dozen35
Small Felt for Lamps20
Burners, per dozen25
Burner Cleaners, per dozen35
Wire on Spools for Burner Cleaners, each10

REFLECTORS

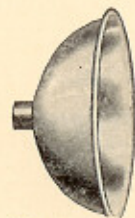
CARBIDE CONTAINERS



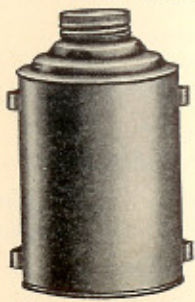
No. 1



No. 2



Nos. 3 and 4



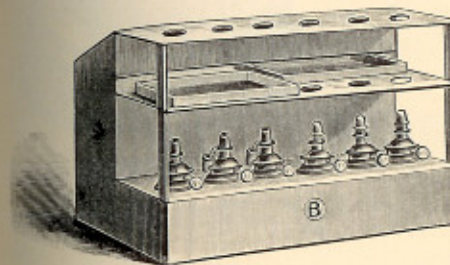
Six 8-Hour Shifts



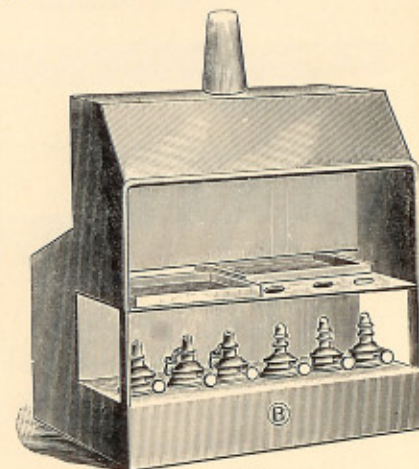
One 10-Hr. Shift

Reflectors, No. 1, per dozen	\$0.20
Reflectors, No. 2, per dozen25
Reflectors, No. 3, 3-inch diameter, per dozen	2.40
Reflectors, No. 4, 2 1/4-inch diameter, per dozen	1.20
Carbide Containers, capacity, six 8-hour shifts, or 1 lb. Carbide, per dozen	2.40
Carbide Containers, capacity, one 10-hour shift, or 1/2 lb. Carbide, per dozen	1.50
Calcium Carbide, size 1/2-inch. 2-lb. cans (original case contains 20 cans). Size 1/2-inch, 10-lb. cans (original case contains 6 cans). Size, 1-inch, 10-lb. cans (original case contains 6 cans). Size 1/4x1/2-inch, 100-lb. drums. Size, 1 1/4x3/8-inch, 100-lb. drums.	Prices on application.

LAMPS



No. 2662



No. 2664

2662 Lamps, Parting. By W. H. Leavens; for alcohol; galvanized iron, very strong; shelves for sand bath and annealing cups; upper shelf perforated for holding test tubes.

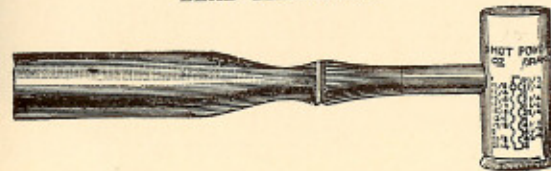
No. of burners	6	8	12
Each	\$3.00	3.50	4.50

2664 Lamps, Parting. Same as above, except upper shelf is left out so as to use flasks instead of test tubes. Hood and pipe attached for carrying off fumes.

No. of burners	6	8	12
Each	\$3.50	4.00	5.00

2666 Lamp Wicks. For parting lamps doz. \$0.10

LEAD MEASURES



No. 2668

2668 Lead Measures. Of improved construction for test lead25

Lead Foil. Chemically Pure. See Chemical List, page 495.

Lenses. See Magnifiers, pages 290, 291.