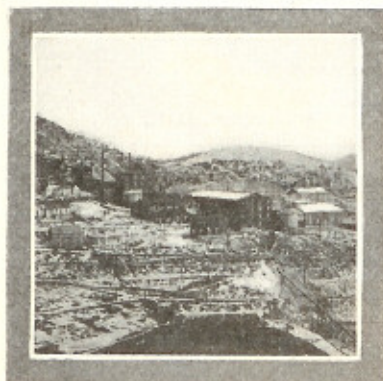


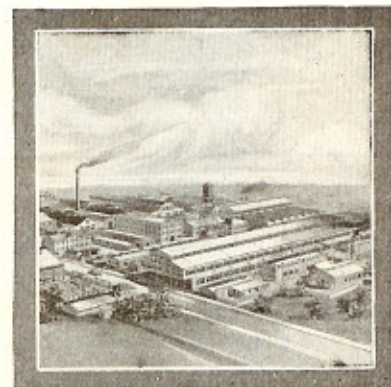
Jeffrey Material-Handling Equipment

as used by the Portland Gold Mining Company

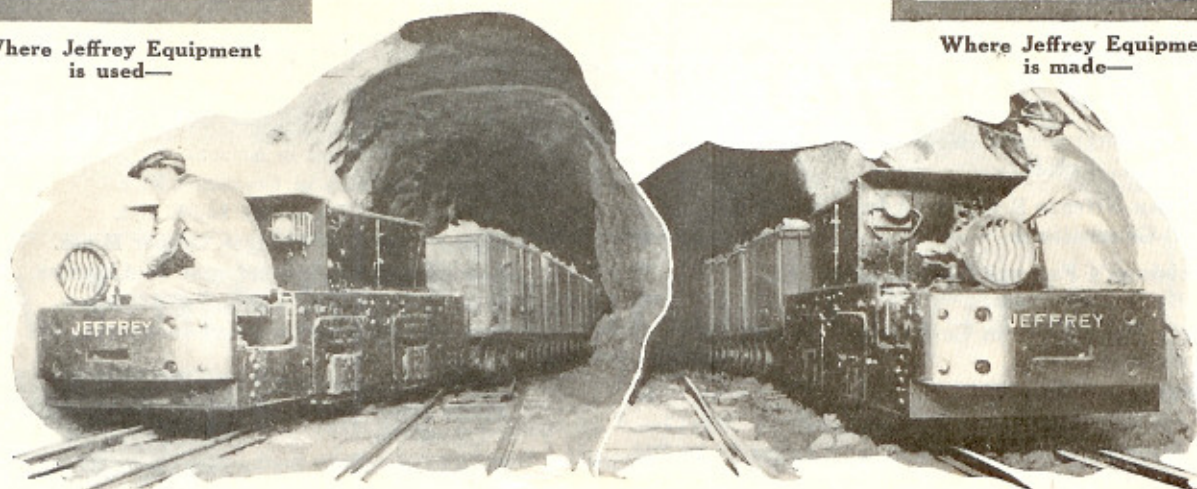


Where Jeffrey Equipment
is used—

Storage Battery Locomotive



Where Jeffrey Equipment
is made—



THE views here given of a Jeffrey Storage Battery Haulage Locomotive handling a trip of cars in a metal mine at Victor, Cal., show how the Portland Gold Mining Company solved their problem of hauling ore over narrow gauge tracks.

So conclusive an argument was offered by the first Jeffrey Locomotive purchased, in the reduction of tramming costs, elimination of trolley wires, rail bonds, etc., that the Company promptly placed "repeat" orders.

The locomotive illustrated operated over an 18-inch gauge track, and has been in continuous

daily service—working customarily in two shifts of eight hours each. On each charge of battery the locomotive makes 24 round trips; hauling 7-tons of ore on each trip of ten cars—weighing 2250 pounds each.

It is of the inside wheel type with single end control, and is equipped with a motor known as the M.H. 108—which is mounted with the armature shaft lengthwise of the locomotive and drives the axle directly through single reduction worm and worm wheel gearing. Higher mechanical efficiency, noiselessness of worm drive and ease of coasting, are among the advantages offered.

The Jeffrey Manufacturing Company, Columbus, Ohio

NEW YORK, 30 Church Street

PITTSBURGH, Ren Bldg., 620 Second Ave.

CHICAGO, 858 McCormick Bldg.

PHILADELPHIA, 515 Real Estate Tr. Bldg.

MONTREAL, Canada, Power Bldg.

SCRANTON, PA., 518 Union Nat'l Bank Bldg.

CLEVELAND, OHIO, 1519 Guardian Bldg.

DENVER, COLO., 1751 Wazee Street

ST. LOUIS, MO., 666 Fontaine Bldg.

DETROIT, MICH., 455 Book Bldg.

MILWAUKEE, WIS., M. & M. Bldg.

CINCINNATI, OHIO, 82 Plum Street

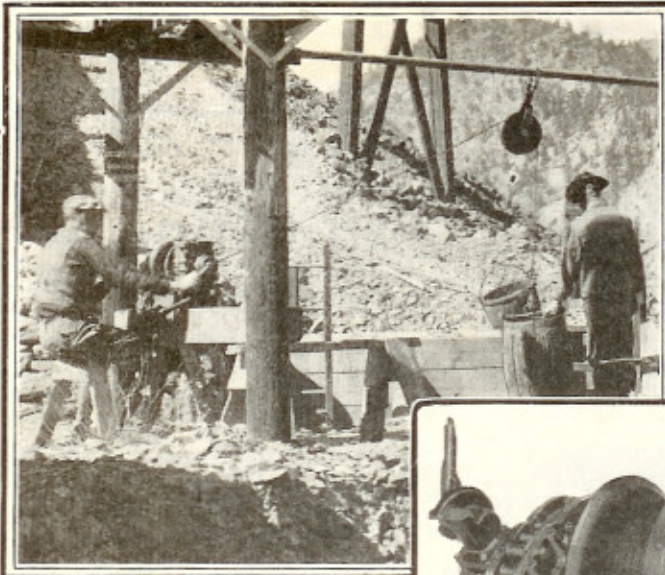
BOSTON, MASS., 141 Milk Street

LOS ANGELES, CAL., H. W. Hellman Bldg.

CHARLESTON, W. VA., 914 Kanawha Street

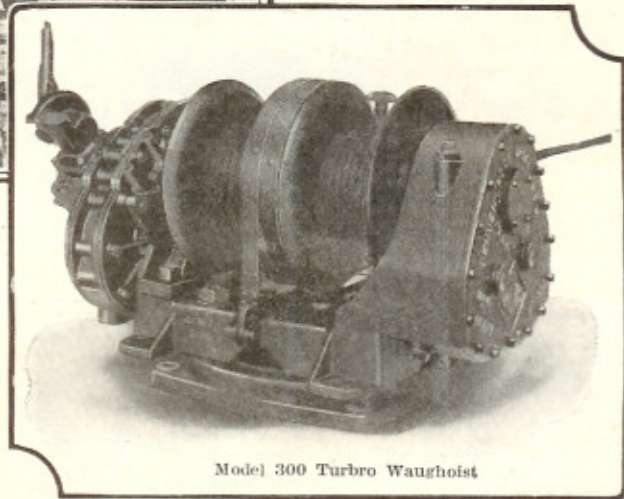
JEFFREY

MINE EQUIPMENT



"The Waugh Way Wins"

Lifting your Load



Model 300 Turbo Waughhoist

LIFTING your load economically and efficiently means adapting the machine to the job; getting enough horsepower, but not too much; a big enough machine, but not too big.

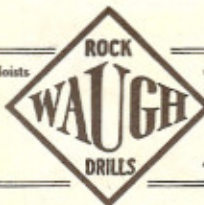
IF the average lifting or pulling load is 1000 pounds or less, use Leadville Model 3, 3-hp. column-hoist; if it is 1000 to 1500 pounds, use Super-Leadville Model 5, 5½-hp. column-hoist; while for the heavier loads in slushing or scraper-mining, no machine will do the job better or more satisfactorily than Model 300 10-hp. double-drum Turbo Waughhoist.

WE are now exclusive selling agents for The William A. Box Iron Works Company, of Denver, Colorado, manufacturers of Leadvilles. Write today to the nearest Waugh branch office for descriptive booklets.

THE DENVER ROCK DRILL MANUFACTURING COMPANY DENVER COLORADO

Rock Drills, Drill Steel Sharpeners and Hole Punchers, Portable Hoists

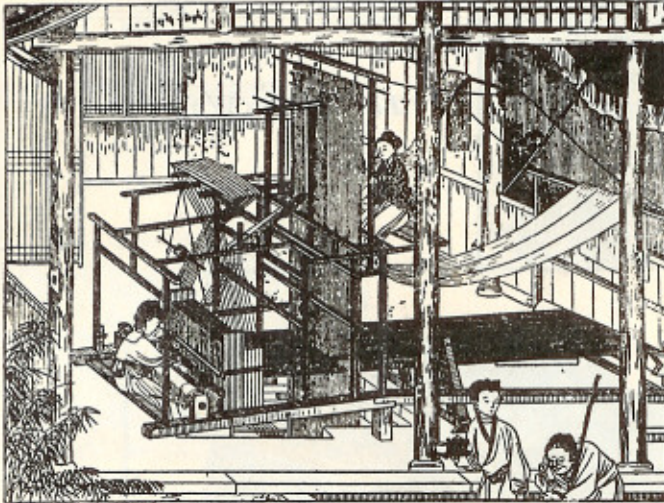
San Francisco	Duluth	Lima	Birmingham
Scranton	Joplin	Santiago	Melbourne
El Paso	Wallace	Butte	Mexico City
St. Louis	Salt Lake City	New York	Pottsville
Seattle	Pittsburgh	Houghton	



Canadian Rock Drill Company, Limited, Sole Agents in Canada
Montreal, Quebec Cobalt, Ont. Nelson, B. C. Vancouver, B. C.

The Denver Rock Drill & Machinery Company, Limited
Sole Agents in South Africa and Rhodesia

Southern Life Building, Johannesburg, Transvaal, S. Africa
Andrews & George Company, Sole Agents in Japan, Tokio, Japan



Chinese Loom For Figured Weaving (photo)

Reproduced by permission of the publishers of the Encyclopaedia Britannica.

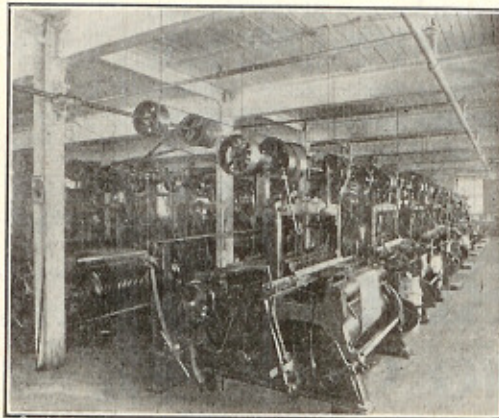
Weaving Throughout the Ages—No. 4

In China, weaving dates back as far as 2690 B.C.

The Chinese were the first and, for centuries, the only cultivators of silk. Ancient Egypt, Babylonia and Rome regarded this rare, woven fabric with wonder. The loom shown here illustrates the description in a Chinese book published in 1210. Compare it with the modern power loom for weaving wire!

“Perfect”

Double Crimped Wire Screens



View of the big batteries of looms in the Ludlow-Saylor Wire Works

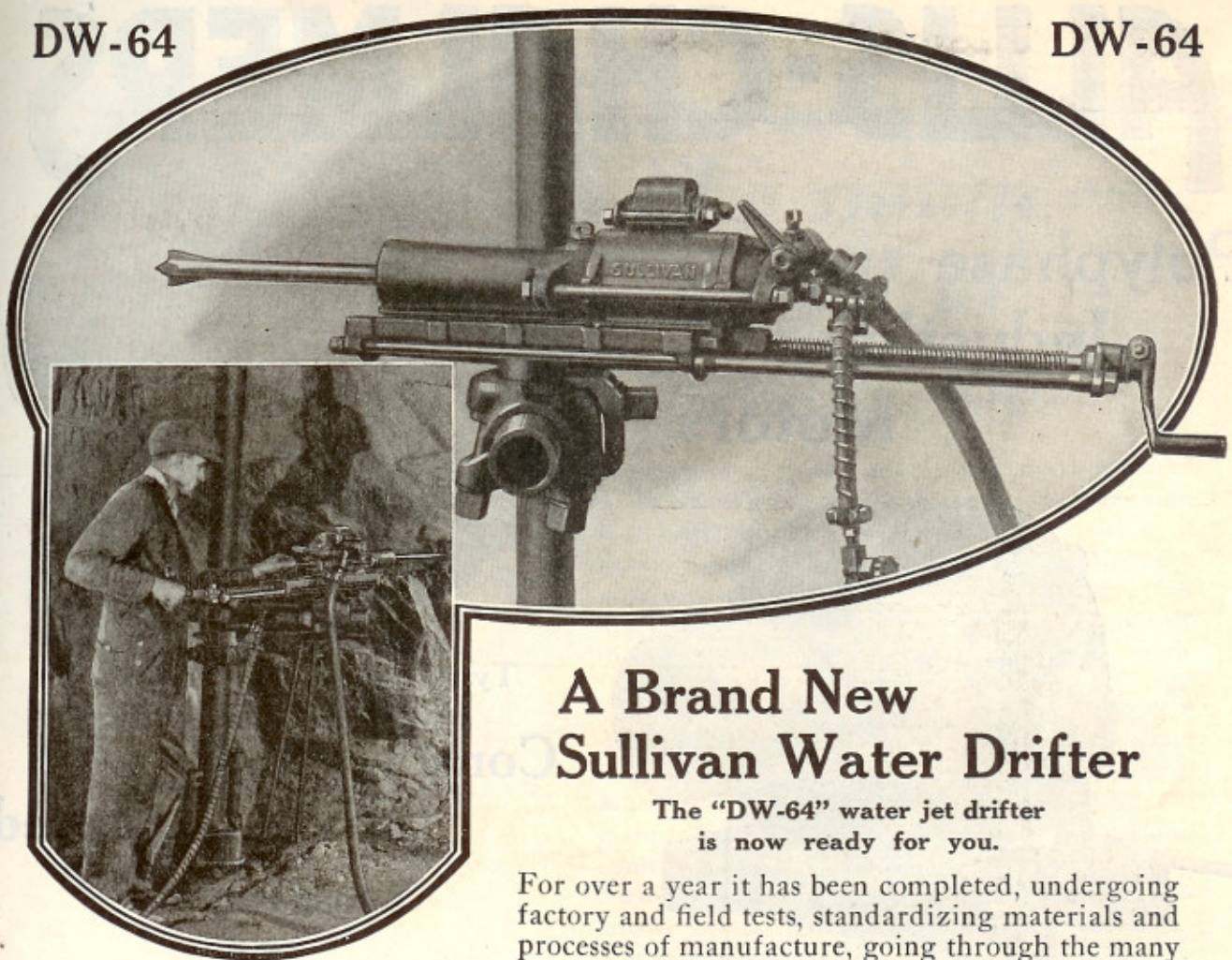
date back, as a power-loom product, to 1896—but there are 67 years of *experience* in their manufacture. This experience (plus our facilities) enables us to offer the screen-user a choice of some 1,000 openings, from .003 inch to 4 inches, with variations so minute that any requirement can be met in our *standard grades*. This choice of *standard grades* also applies to given *openings* in any one of several *different weaves*, to meet varying conditions calling for maximum durability, flexibility, rigidity, speedy output, etc.

Our Catalog No. 46 contains full information and listings of all weights and openings obtainable in standard grades of screen. Digest of this data may also be obtained from the Keystone Mining Catalog for 1923. Catalog No. 46 upon request.

The Ludlow-Saylor Wire Co.
St. Louis, Mo.

DW-64

DW-64



A Brand New Sullivan Water Drifter

The "DW-64" water jet drifter is now ready for you.

For over a year it has been completed, undergoing factory and field tests, standardizing materials and processes of manufacture, going through the many stages necessary to make it a commercial drill, not an experiment.

This new Sullivan drifter is the hardest hitting, fastest, lightest mounted hammer drill in the Sullivan family. For example, it weighs only 130 lbs. but it will handle 1 1/4 inch hollow steel on 12 to 18 foot flat holes in any ground, hard or soft, or broken; and bottom them much faster than drills weighing 40 to 100 pounds more.

Sullivan drill engineers have cut out useless weight but have used better materials, and the best design which their long experience could suggest.

"DW-64" uses the Sullivan independent differential spool valve, a pioneer twenty-five years ago, still the leader in giving a powerful blow, air economy, freedom from breakage and wear.

Other features are:

Automatic rifle bar rotation.
Automatic lubricator
Dust proof, two-piece chuck
Combined air and water jets, with separate control of each.

Light weight reversible shell, 24 inch or 30 inch feed.
Freedom from vibration.
Ability to drill fast on high or on low pressure.

But send for the whole story—In Bulletin 281-C.

DOMESTIC SALES OFFICES

Birmingham, Boston, Butte, Claremont, N. H., Cleveland, Dallas, Denver, Duluth, El Paso, Huntington, W. Va., Joplin, Juneau, Knoxville, New York, Pittsburgh, St. Louis, Salt Lake, San Francisco, Spokane.

COMPRESSORS AIR LIFT DIAMOND DRILLS SHARPENERS FORGES
FORGE HAMMERS COAL CUTTERS ROCK DRILLS DRILLING CONTRACTORS

SULLIVAN
MACHINERY COMPANY
126 So. Michigan Ave. Chicago.

FOREIGN SALES OFFICES

Algiers, Brussels, Calcutta, Christiania, Durban, Natal, Havana, Lima, London, Madrid, Mexico City, Paris, San Juan, Santiago, Shanghai, Sydney, N. S. W., Tokyo, Toronto, Tunis, Turin, Vancouver.



Cap'n Dick—Cornish Mine "Captain"

"Andlin' water's like minin'— It's all in nawin' 'ow'"

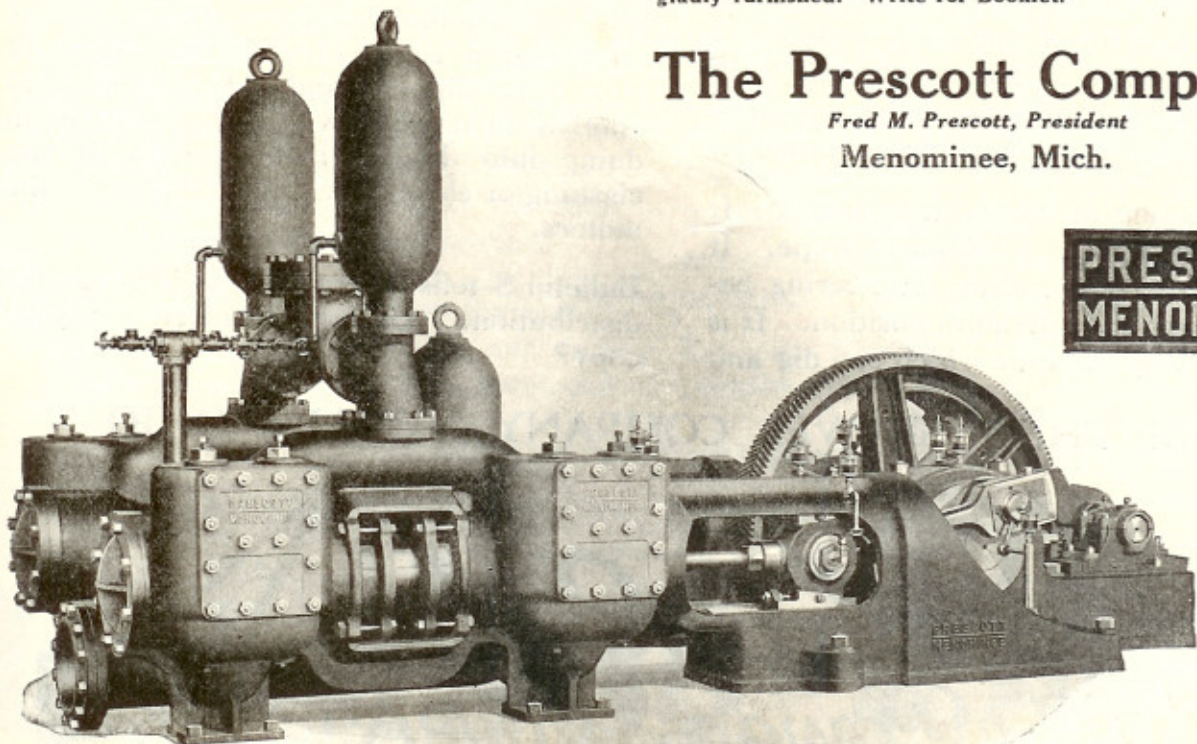
Prescott-Menominee mine pumps have all been designed as a result of actual day after day contact with mining conditions over a period of many years. This is why Prescott-Menominee pumps embody no experimental theories but are correctly designed to meet the actual conditions just as they are encountered at the mine.

Because Prescott Co. engineers know these conditions at first hand and how severe the service is to which mine pumps are subjected, Prescott-Menominee pumps have rugged strength to meet every test. Heavy shock pressures and continuous week-in-an-week-out, non-stop service only reveal their reserve strength and endurance.

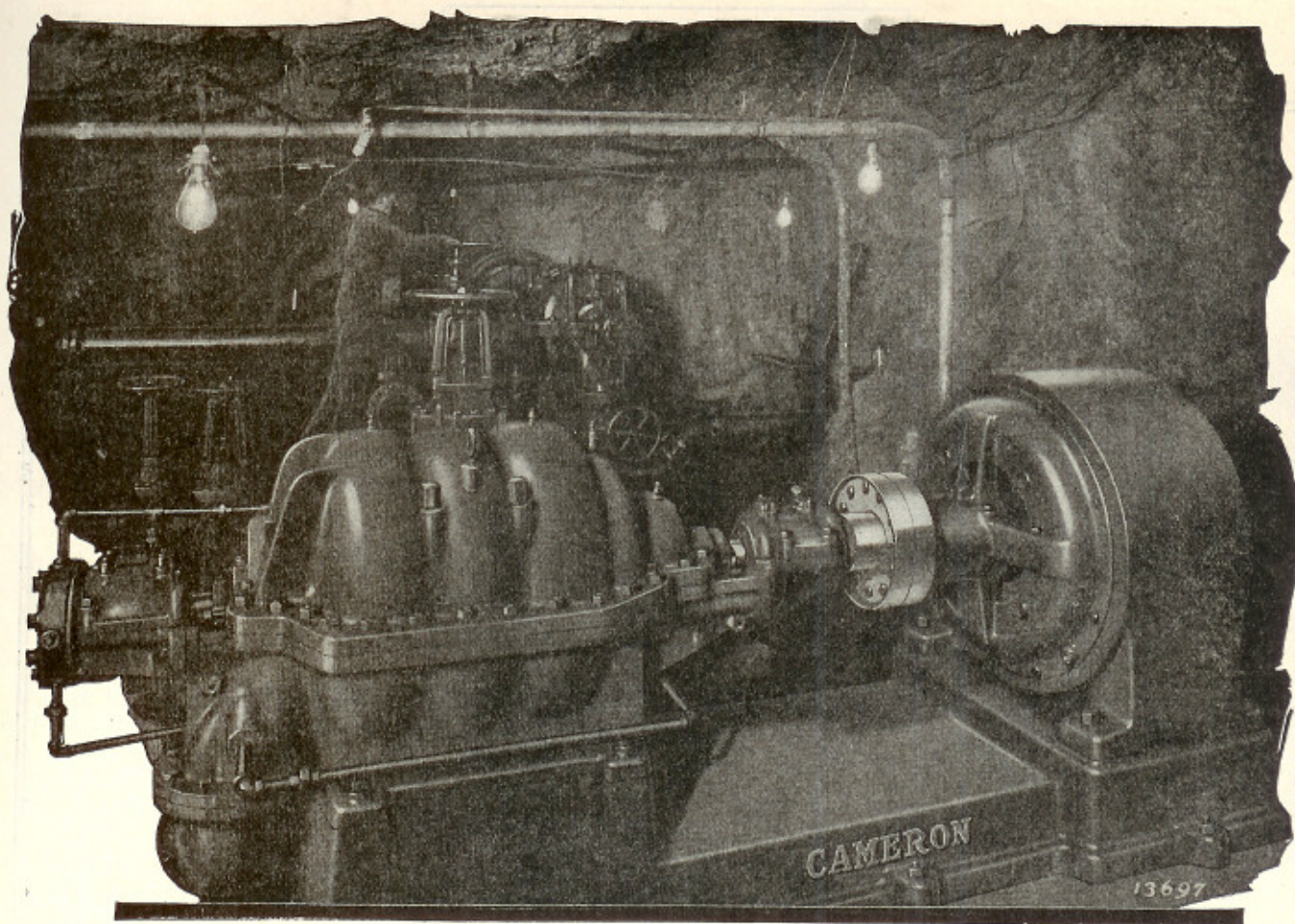
Detailed information on the application of Prescott-Menominee equipment to any individual installation will be gladly furnished. Write for Booklet.

The Prescott Company

Fred M. Prescott, President
Menominee, Mich.



**PRESCOTT
MENOMINEE**



Cameron Pumps

For Mine Service

For every mine pumping requirement on the surface and underground, there is a "Cameron" designed to give the most efficient and best all-around service.

Each pump is designed for the service condition for which it is sold, and each detail of construction has been developed

and designed in accordance with modern engineering theory and practice.

The satisfaction expressed by mine operators regarding Cameron Pumps has been universal.

Let our Engineers solve your pump problems.

Complete set of bulletins on request

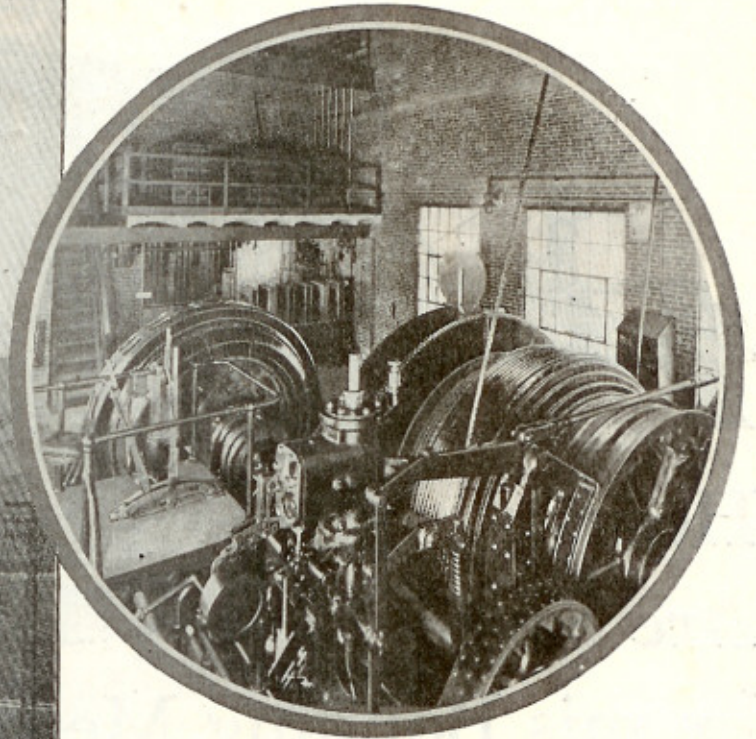
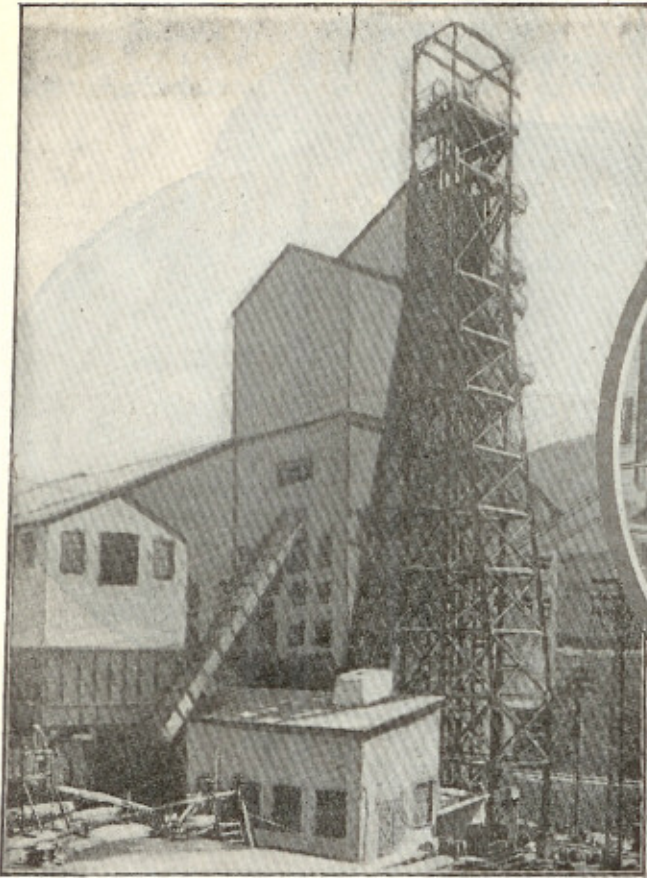
INGERSOLL-RAND CO., 11 Broadway, New York

Offices in All Principal Domestic and Foreign Cities

Ingersoll-Rand

171-DV

A. S. CAMERON STEAM PUMP WORKS



**Other
Vulcan Equipment**

Steam Locomotives
Gasoline Locomotives
Rotary Kilns, Dryers,
Coolers and Roasters
Mine Ventilating Fans
Cages and Skips
Sheave Wheels
Corliss Engines
Coal Crushers and Rolls
Gray Iron Castings
Open Hearth Steel
Castings
Gears, Moulded and Cut
Teeth
Special Machinery

Exceeding expectations by 500 tons per hour!

The original specifications at No. 6 Shaft of the Cambria Steel Company's Mine at Rosedale called for equipment to handle 750 tons of coal per hour. The delay allowed for dumping and loading was 10 to 12 seconds.

This capacity has now been increased to 1,250 tons per hour.

It is a 1,000 hp. Vulcan Hoist with a double cylindro-conical drum; completely equipped with safety devices. The hoisting is done in balance; total travel of rope 350 feet.

This hoist is equipped with Falk herringbone gears.


Full particulars on this and other electric and steam hoist installations in many parts of the country supplied upon request

VULCAN IRON WORKS

Established 1849

1733 Main Street, Wilkes-Barre, Pa.

VULCAN OF WILKES-BARRE HOISTS





*The Birthplace
of Prest-O-Lite Service
Indianapolis, 1904*

Prest-O-Lite pioneered for you

PREST-O-LITE was the first to conceive and put into operation the idea of a nation-wide chain of service stations.

When the Oxy-Acetylene Process made its entry into American factories, Prest-O-Lite Service was already a household expression.

Today, 28 plants and 44 warehouses

supply this one universally used gas for both welding and cutting in convenient portable form. And 1924 will see further additions to Prest-O-Lite facilities.

Prest-O-Lite Dissolved Acetylene meets every demand for an economical, safe, portable fuel gas for welding and cutting. Prest-O-Lite Service meets every demand for a dependable supply anywhere, any time.

THE PREST-O-LITE COMPANY, INC.

General Offices: Carbide & Carbon Building, 30 East 42d Street, New York

In Canada: Prest-O-Lite Co. of Canada, Toronto

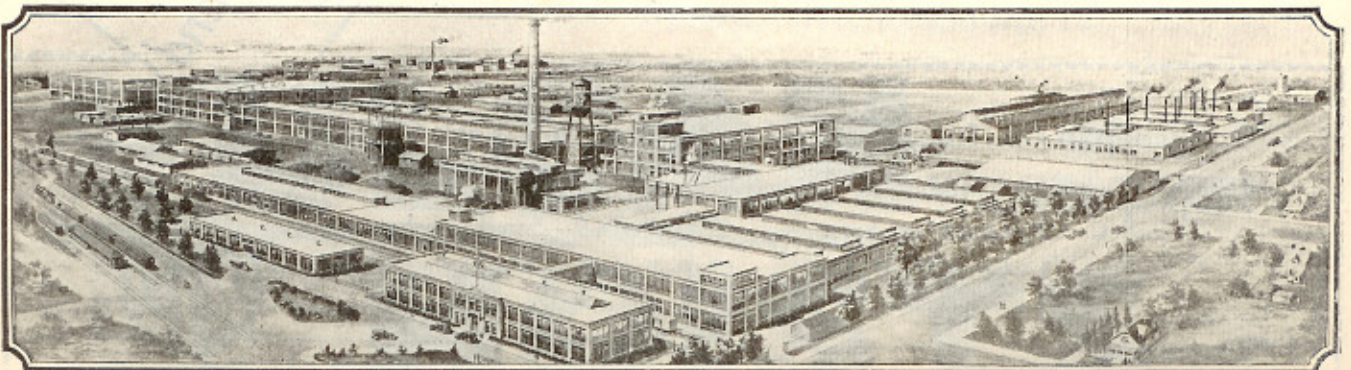
District Sales Offices

ATLANTA · BALTIMORE · BOSTON · BUFFALO
CHICAGO · CLEVELAND · DALLAS · DETROIT
KANSAS CITY · LOS ANGELES · MILWAUKEE

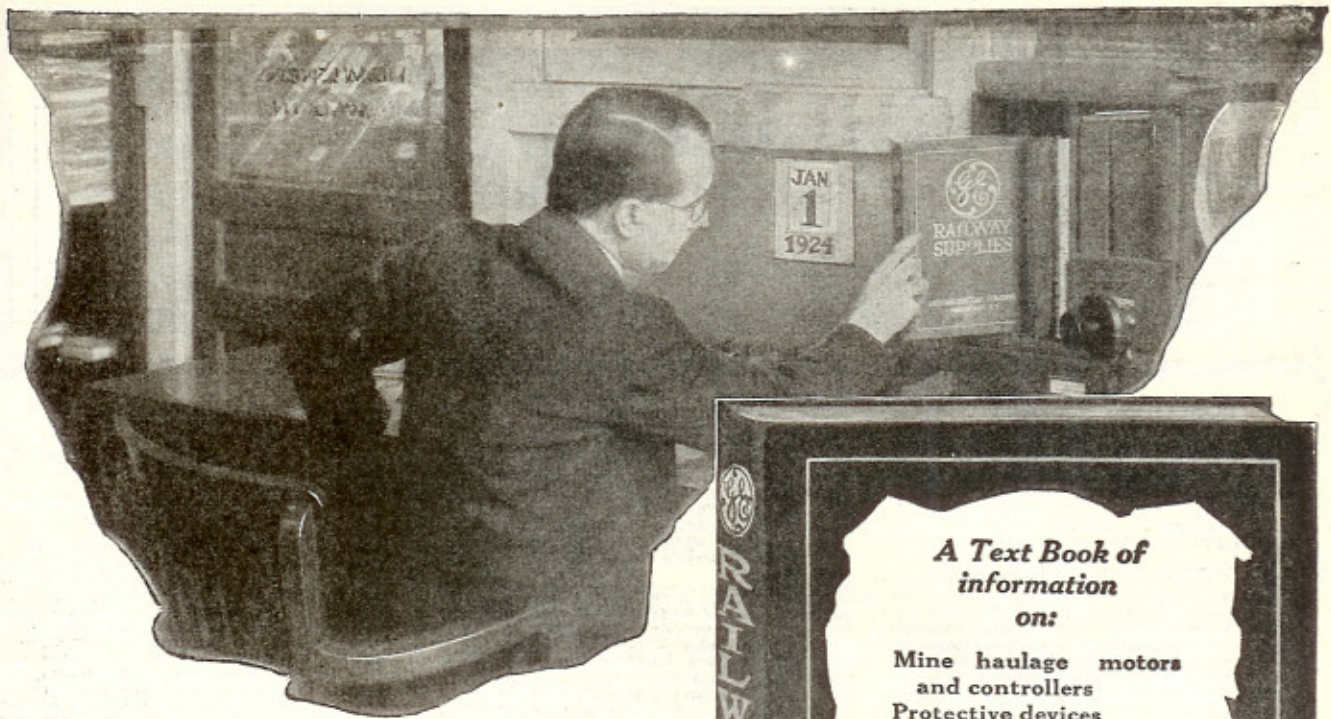
Prest-O-Lite
DISSOLVED ACETYLENE

District Sales Offices

NEW ORLEANS · NEW YORK · PHILADELPHIA
PITTSBURGH · SALT LAKE CITY
ST. LOUIS · SAN FRANCISCO · SEATTLE



TWENTY YEARS AFTER



"No more substitutes"

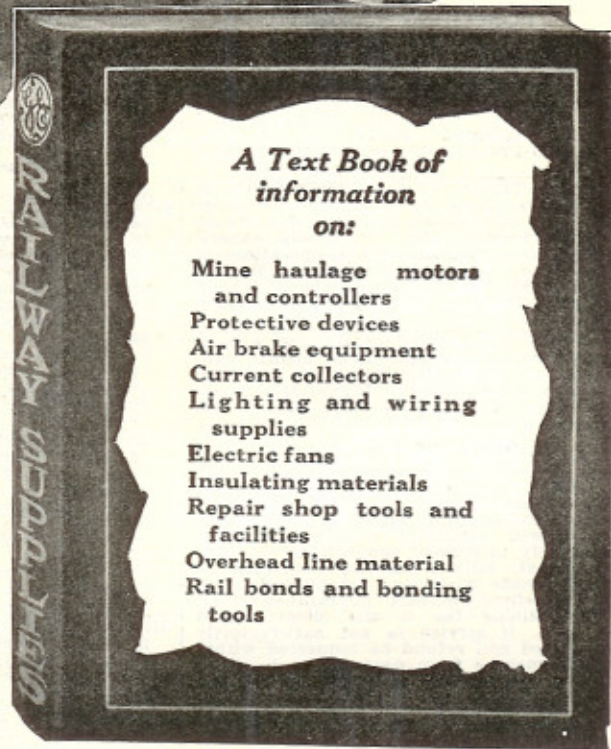
Another good-resolution time is here. If you have not already resolved to stick to known value, to insist on materials of original equipment quality, do it now.

Every manager, superintendent, or purchasing agent of every electrified mine in this country has his G-E Railway Supply Catalog. It is no longer necessary to purchase supplies at random.

In this volume are listed modern standard equipment for surface and underground electric railways; devices for supporting, connecting and protecting the distribution system and also appliances to facilitate maintenance.

You can simplify your buying, secure the advantages of standardization and maintain the original quality of your G-E Equipment, if you accept no substitutes.

Resolve to use your G-E Catalog.



General Electric Company
Schenectady, N. Y.
Sales Offices in all Large Cities

40-319

GENERAL ELECTRIC

**NEW AND REBUILT
Mining and Milling Machinery**

Send for
Complete List

Agents for:
Allingham Flotation
Machines
Plymouth Locomotives
Buchanan Jaw Crushers



Rosenburg Co.

3rd & San Pedro Sts. Los Angeles, Cal. 5th Madison & Jackson Sts. Phoenix, Arizona

FOR SALE

TRAMWAY

Four thousand foot complete. Leschen Heavy Duty Friction Grip System. Capacity 50 tons per hour at speed of 500 feet per minute. Equipment includes 4075 ft. of 1 3/4-in. locked coil cable, 8415 ft. 3/4-in. cast steel traction rope, 30 buckets, equipment for loading and discharge terminals, etc. Full description upon request. A real bargain.

United Verde Extension Mining Company
Jerome, Arizona

Thyle Machinery Co.

formerly

A. H. SIMPSON CO.

Rebuilt Machinery

129 Fremont St., San Francisco



**Bureau of
Canadian Information**

THE Canadian Pacific Railway through its Bureau of Canadian Information, will furnish you with the latest reliable information on every phase of industrial and agricultural development in Canada. In the Reference Libraries maintained at

Chicago, New York and Montreal are complete data on natural resources, climate, labor, transportation, business openings, etc., in Canada. Additional data is constantly being added.

Development Branch—If you are considering the establishment of your industry in Canada, either to develop your Canadian business or export trade, you are invited to consult this Branch. An expert staff is maintained to acquire and investigate information relative to Canadian industrial raw materials. Information as to such raw materials as well as upon any practical problem affecting the establishment of your industry, including markets, competition, labor costs, power, fuel, etc., is available.

*No charge or obligation is attached to the above services.
Business men and organizations are invited to make use of it.*

Canadian Pacific Railway Company

Department Colonization and Development

Windsor Station
Montreal, Can.

C. P. R. Building
Madison Ave. at 44th St.
New York

165 E. Ontario St.
Chicago, Ill.

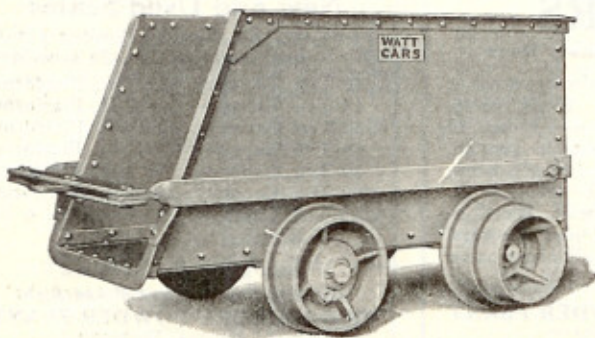
MILL EQUIPMENT

- 2—12x16-ft. Oliver Filters, steel tanks, complete with 16x10-in. I. R. compressor, duplex wet vacuum pump, centrifugal pump, vacuum tanks. All good condition.
 - 2—16x16-ft. Dorr Agitators and redwood tanks.
 - 3—34x20-ft. Dorr Agitators and redwood tanks. Nearly new.
 - 2—6x4 1/2-ft. Worthington Ball Mills, new.
- CURTIS MACHINERY COMPANY**
399 Nevada Life Bldg., Reno, Nevada

FOR SALE

1—24-in. 16-cell Mineral Separation Flotation Machine, boxed for export, Pacific port.

THE HOLBECK ENGINEERING CO.
504 Marshall Bldg., Cleveland, O.



Builders of
GOOD CARS

Since 1863

— Catalogs —

The Watt Mining Car Wheel Co.
Barnesville, Ohio

Selling "Watt Quality Products"

Pittsburgh, Pa.
W. C. Wilson,
1125 Greenfield Ave.

Huntington, W. Va.,
J. E. Graham,
828 Ninth Ave.

New York, N. Y.
C. R. Gier Co.,
66 Beaver St.

Chicago, Ill.,
W. W. Baker,
140 South Dearborn St.

San Francisco, Cal.,
N. D. Phelps,
Sheldon Bldg.

Denver, Colo.,
Landroth, Shubart Co.,
Boston Bldg.

The
West Virginia Rail Co.
Manufacturers
Light Steel Rails
and Accessories
8-12-16-25-30-35-40-45-50-lbs. per yd.
Huntington, W. Va.

ROTARY CAR-DUMPERS FOR MINE CARS
(GRAVITY, ELECTRICAL OR PNEUMATIC DRIVE)

CAR-DUMPER & EQUIPMENT CO.

THE MECHANICAL SPRAGGER
AUTOMATIC TRIP CONTROL EQUIPMENT

"SOLIDCAR" SELF-DUMPING CAGES
CAR CONTROL AND CAGING EQUIPMENT

LEWIS BRADEN
PITTSBURGH
PA.

Represented by **Lake Shore Engine Works, Marquette, Mich.**



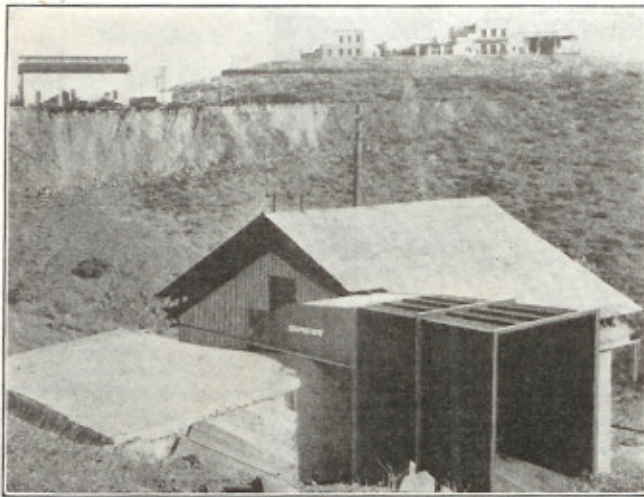
Western Service

Our engineers will be glad to help you in any way with your haulage problems. Experts will advise you as to the most economical installation under your particular conditions and give you the solution that is best for YOUR profit. This is a part of the Western Service. It obligates you in no way to buy from us.

We shall be glad to send you our latest Dump Car Catalog on request.

Western Wheeled Scraper Company

Earth and Stone Handling Equipment
Aurora, Illinois



View shows housing of larger Sturtevant fan at United Verde Mine. In background, residence of Jas. S. Douglas, President.

135,000 cu. ft. per minute at the United Verde Mine

A recent test of one of the Sturtevant Fans installed at the Jerome, Arizona, mine of the United Verde Extension Mining Company, showed a capacity of from 125,000 to 135,000 cu. ft. per minute. This Fan can be closed off an entire hour without danger, as the force of circulation keeps the air moving.

Only one shutdown—for a minor adjustment—has been necessary in four years. A second Sturtevant Fan is installed for emergency purposes.

B. F. Sturtevant Co.

Hyde Park, Boston, Mass.

Sales Engineering Offices and Direct Representatives in Every Commercial Center of the World.

Plants located in

Hyde Park, Mass.
Framingham, Mass.
Sturtevant, Wis.

Berkeley, Calif.
Camden, N. J.
Galt, Ontario



A *Justrite* CAP LAMP

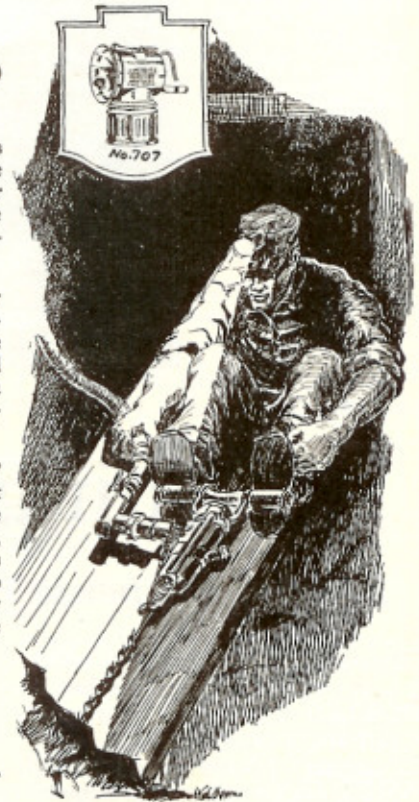
You will prefer this lamp for the same reason that other miners all over the country prefer it—it's JUSTRITE.

The success of our business is the result of giving the miner a rugged lamp that gives a powerful, dependable light.

JUSTRITE CAP LAMPS are built stronger, they are easier to operate, have fewer parts and cost less to maintain than any other lamps on the market.

**Justrite
Mfg. Co.**

2080 Southport Ave.,
Chicago, Ill.



Decrease Haulage Costs

— WRITE FOR CATALOG —
Geo. D. Whitcomb Company
ROCHELLE - ILLINOIS
See Our Double Page Advertisement January 1914

ATLAS

STORAGE
BATTERY
LOCOMOTIVES

}

*For Main Line,
Surface, and
Gathering Work*

The Atlas Car & Mfg. Co., Cleveland, O.

ELECTRIC TRAMMING LOCOMOTIVES

Trolley—Storage Battery—Combination

*Narrow or Wide Gauge
Light or Heavy Hauling*

Goodman Manufacturing Company, Chicago, Illinois

PLYMOUTH

Gasoline Locomotives

For Mine and
Industrial Haulage

Ask for Bulletins
Plymouth, Ohio, U. S. A.
THE FATE-ROOT-HEATH CO.

A *Justrite* TRADE MARK CAP LAMP

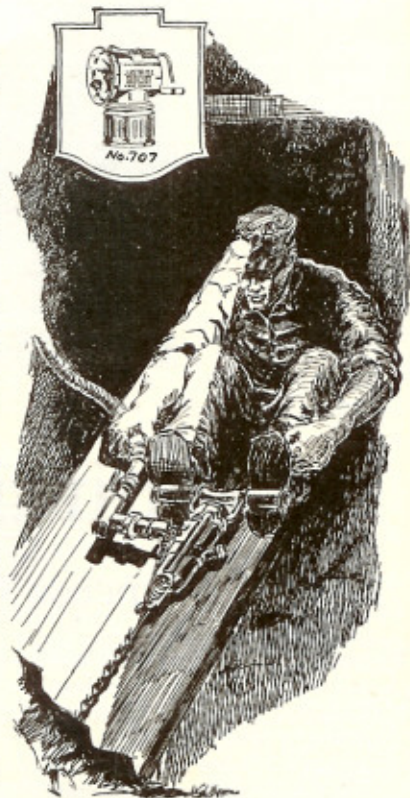
You will prefer this lamp for the same reason that other miners all over the country prefer it—it's JUSTRITE.

The success of our business is the result of giving the miner a rugged lamp that gives a powerful, dependable light.

JUSTRITE CAP LAMPS are built stronger, they are easier to operate, have fewer parts and cost less to maintain than any other lamps on the market.

**Justrite
Mfg. Co.**

2080 Southport Ave.,
Chicago, Ill.



Leschen Aerial Tramways

are daily demonstrating their practical efficiency in various parts of the world. They are economical carriers because—

- they can often be run by gravity
- they are not affected by weather conditions
- installation and operating costs are not materially increased by irregular ground conditions
- maintenance and operating costs are low
- they are correctly designed and made of high-grade material throughout.

We have had many years of experience in this line of manufacture, and will be glad to furnish full information to anyone interested.

Established 1857

A. Leschen & Sons Rope Company

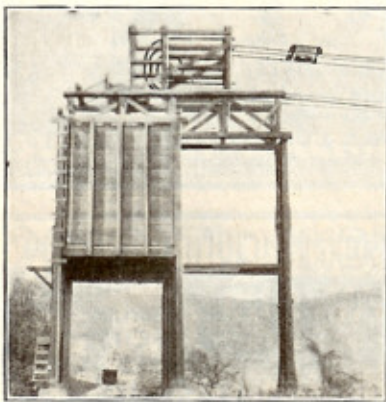
MAKERS OF

Wire Rope and Aerial Wire Rope Tramways

New York Chicago ST. LOUIS Denver San Francisco



"HERCULES" (RED STRAND) WIRE ROPE
(REG. U.S. PAT. OFF.)



Can a Leopard Change His Spots?

—Perhaps not, but you can change your Losses to Profits by hauling with the

AUTOMATIC AERIAL TRAMWAY

Write Us.

Interstate Equipment Corporation,
 25 Church St., N. Y. C.

American Wire Rope
 AND
AERIAL WIRE TRAMWAYS
 Send for Illustrated Catalogue
American Steel & Wire Company
 Chicago-New York

OTTUMWA IRON WORKS OTTUMWA, IOWA

Manufacturers of
 Electric and Steam Hoisting Engines
 and Mine Equipment

Ottumwa Patent ROLLER BEARING TRUCKS
 For Mine and Industrial Cars



RIBLET AERIAL TRAMWAYS

Automatic, High-Speed; Self-Adjusting Positive Grip

Tell us in detail what you wish to accomplish
 Riblet Tramway Co., Spokane, Wash.

Rosiclare Fluor Spar

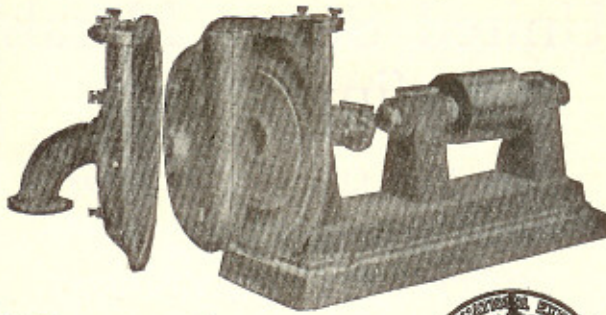
ROGERS, BROWN & Co.

SALES AGENTS

All Grades

CINCINNATI BUFFALO
 NEW YORK ST. LOUIS
 CLEVELAND BOSTON
 CHICAGO PITTSBURGH
 PHILADELPHIA

Write for Illustrated Catalog No. 79



Krogh Sand Pumps

Made in five standard sizes.

All liners and impellers are of special chilled car-wheel iron, of such hardness no tool steel will work them.

The moderate speed of this pump is a factor in its great durability.

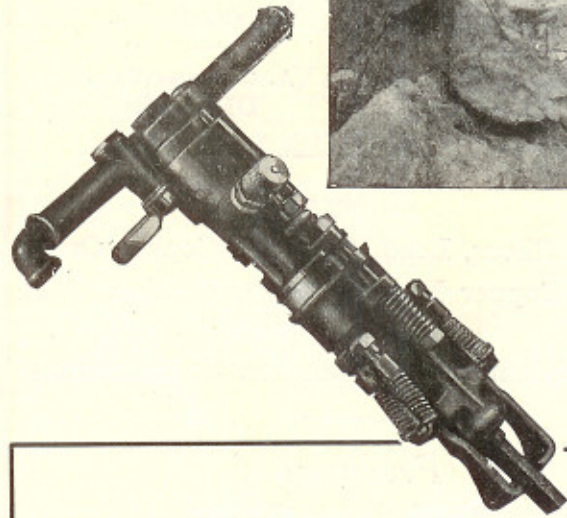
The Krogh Pump & Machinery Co.

147 Beale St., San Francisco



Partial List of Users

- Anaconda Copper Mining Co.
- Alaska Treadwell Gold Mining Co.
- Alaska Juneau Gold Mining Co.
- Alaska Gastineau Mining Co.
- Arizona Copper Co.
- Beatson Copper Co.
- Braden Copper Co.
- Butte & Superior Mining Co.
- Canaan Consolidated Mining Co.
- East Butte Copper Mining Co.
- Mexican Corporation
- Mond Nickel Co.
- Miami Copper Mining Co.



No Production Delays!

It's no trick to keep well ahead of the muckers with a Cleveland "44." The patented air-pocket-in-the-hammer-head of the Cleveland No. 44 insures maximum drilling capacity. In addition, all kick back is eliminated.

Because of these features—big drilling capacity and ease of operating—drillers always pick the Cleveland. A Cleveland gives them a good day's work without over fatigue.

If your drill runner's satisfaction means anything to you—if increased production is what you want—try a Cleveland. It costs you nothing to try out this drill—let it prove our statements.

Write today for our proposition

The Cleveland Rock Drill Company
3734 East 78th Street, CLEVELAND, OHIO

- EASTERN HEADQUARTERS: Room 526, 39 Church St., New York City
 - PACIFIC COAST HEADQUARTERS: 126 O Street, Sacramento, Calif.
 - MIDDLE WEST HEADQUARTERS: 905 14th St., Denver, Colo.
 - SALT LAKE OFFICE: 409 Dooly Bldg., Salt Lake City, Utah
- Canadian Trade Supplied by
Cleveland Pneumatic Tool Co. of Canada, Ltd., Toronto, Ont.

Cleveland POCKET-IN-HEAD Rotators

THE WORLD'S MOST RELIABLE
DIAMOND-DRILL CONTRACTORS
SINCE 1884
SULLIVAN MACHINERY CO.
126 SO. MICHIGAN AVE. CHICAGO, ILL. EXPERIENCE

Speed—Economy—Results.
Send for Bulletins

HARDSOCC DRILLS
Hardsocg Wonder Drill Co., Ottumwa, Iowa.

DIAMOND DRILLS
Hand Power, Gasoline, Steam, Air, Electricity.
Send for Catalogue No. 6.
STANDARD DIAMOND DRILL COMPANY
745 First National Bank Building, Chicago, U. S. A.

For the past 50 years
American Diamond Core Drills have played an important part in exploration work of every character.
We solicit your inquiries and will be glad to send you descriptive bulletin.
Hunter Machine Works, Hoboken, N. J.
Manufacturers of Diamond Drills and Special Mining Machinery.

The American Metal Co., Ltd.

61 Broadway
New York

Oliver Bldg.
Pittsburgh, Pa.

Boatman's Bank Bldg.
ST. LOUIS

A. C. Foster Bldg.
DENVER

Buyers of

Gold, Silver, Lead, Zinc and Copper Ores.
Copper Matte, Copper Bullion
and Lead Bullion.
Molybdenum and Tungsten Concentrates.

Producers of

Gold, Silver, Copper
Lead and Zinc.

Importers of
Tin

United States Metals Refining Co.

New York Office: 61 Broadway

Smelter and Refinery at
CARTERET, NEW JERSEY

Buyers of:

Ores, Mattes, Concentrates, Residues
containing, Copper, and or Silver, and or Gold,
Copper Bullion, Black Copper,
Copper and Brass Furnace Materials

Producers of:

Electrolytic Copper, "DRW" Brand
Silver, Gold,
Platinum, Palladium, Selenium

Matthiessen & Hegeler Zinc Co.

La Salle, Ill.

Manufacturers of

SHEET ZINC
(Corrugated and Plain)
RIBBON ZINC, in Coils
SLAB ZINC
SULPHURIC ACID

Sheet Zinc for use in the Cyanide Process, perforated so as to meet the requirements of the Mexican Customs Laws.

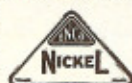
Eastern Offices:
111 Broadway, New York City

Telephone Rector 5595

NICKEL MONEL METAL

—shot, ingot, electrolytic
99.8%, malleable nickel in
all commercial forms.

—castings, shot, ingot, rod,
sheet, tubes, etc.



THE INTERNATIONAL
NICKEL CO.
67 WALL ST., NEW YORK



PHELPS DODGE CORPORATION

99 JOHN STREET, NEW YORK

"C★Q"
ELECTROLYTIC COPPER "P.D.Co."
CASTING

Members of Copper Research Association

ASSAYERS & REFINERS

Specialists in

Palladium PLATINUM Iridium
Rhodium Ruthenium Osmium
Gold and Silver

PLATINUM SCRAP PURCHASED

BAKER & CO., INC.

Refiners and Workers of Platinum, Gold and Silver.

54 Austin St.
10 Church St., New York NEWARK, N. J. 5 S. Wabash Ave., Chicago

THE GRASSELLI CHEMICAL CO.

Producers of

ZINC
ZINC DUST
ZINC OXIDE
SHERARDIZING ZINC

Buyers of

ZINC ORES

Guardian Building
CLEVELAND, OHIO

347 Madison Avenue
NEW YORK, N. Y.



Buyers of
Ores—Concentrates—Lead Bullion—Dore Bullion—Residues

Containing
Gold—Silver—Platinum—Copper—Lead

BALBACH SMELTING AND REFINING COMPANY

Works: Newark, N. J.

Established 1852

Offices: Newark, N. J.—280 Broadway, N. Y.

BALBACH METALS CORPORATION

Established 1922

280 Broadway, New York

Bartlesville Zinc Co.
Bartlesville, Okla.

ZINC

Blackwell Zinc Co.
Blackwell, Okla.

Prime Western and Brass Special
Also Zinc Oxide and Zinc Dust

Sole Agents:

THE AMERICAN METAL COMPANY, LIMITED
61 Broadway, New York

**AMERICAN ZINC, LEAD
& SMELTING CO.**

PURCHASERS OF

ZINC AND LEAD ORES

—ADDRESS 1012 PIERCE BLDG. ST. LOUIS, MO.

EXPLORATION DEPT. FOR THE PURCHASE OF
METAL MINES & METAL MINING COMPANIES

55 CONGRESS ST. BOSTON, MASS.

ILLINOIS ZINC CO.
PERU, ILLINOIS

Manufactures of

SELECTED BRASS, SLAB ZINC
and SULPHURIC ACID

Rollers of SHEETS, PLATES and STRIPS

ZINC in special sizes, squares and circles, cut to
order. Etchers' Engravers', Lithograph-
ers' and Battery Plates. Paper and Card
Makers' Sheets.

EASTERN SALES OFFICE

Tel. Worth 1496

280 Broadway, New York

**Irvington Smelting
& Refining Works**

Formerly Glorieux Smelting & Refining Works
Buyers, Smelters and Refiners of

Gold, Silver, Lead, Copper and Platinum
Ores, Sweeps and Bullion

Manufacturers of Copper Sulphate

Irvington, New Jersey

Lehigh Valley R. R. connection
New York Office:

CHARLES ENGLEHARD, Hudson Term. Bldg., 30 Church St.

ORES—METALS—MINERALS

FERRO-ALLOYS
ALLUMINUM

SHEETS and INGOTS

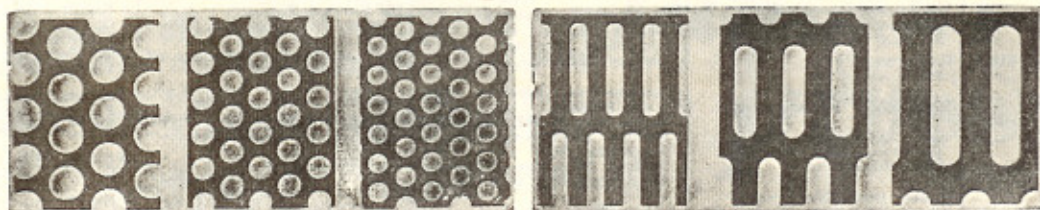
Molybdenum	Manganese	
Tungsten	Vanadium	
Bismuth	Chrome	
Copper	Antimony	Zinc
Lead	Nickle	Tin

GOLD—SILVER—PLATINUM

Charles Hardy & Ruperti, Inc.
115 Broad St., New York City

PERFORATED METAL

All sizes
and
shapes
of Holes



All kinds
and
thick-
nesses of
Metal

FOR SCREENING ORES—ROCK—GRAVEL—SAND—COAL AND ALL MINERALS

Harrington & King Perforating Company

5641 Fillmore St., Chicago, Ill., U. S. A.

New York Office: 114 Liberty Street



*Trolley Supplies, Rail Bonds
Porcelain Insulators*

The Ohio Brass Company
MANSFIELD, OHIO

ROBINS CONVEYING MACHINERY

For every material handling need

We design, manufacture and erect BELT CONVEYORS, BUCKET ELEVATORS, SKIP HOISTS, COAL AND COKE CRUSHERS, 'PERFEX' SCREENS, and many other types of material handling BRIDGES, and many other types of material handling equipment.

Write for Hand-Book of Conveyor Practices

ROBINS CONVEYING BELT COMPANY

New York, 15 Park Row
Boston, 7 Water St.

Chicago, Old Colony Bldg.
Pittsburgh, Union Trust Bldg.



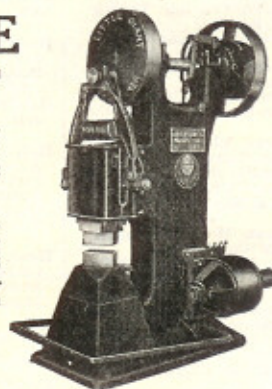
LITTLE GIANT

Power Hammers

Motor or Belt
Driven

Efficient and economical. Guaranteed forever and sold on 30 days' free trial. Over 1000 in use in mines.

Write for
Particulars.

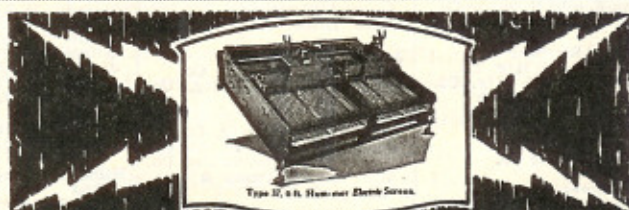


Little Giant Co., 250 Rock St., Mankato, Minn.

The Greenawalt Sintering Apparatus and Process

John E. Greenawalt
110 East 42nd Street
New York, N. Y.

W. E. Greenawalt
85 South Sherman Street
Denver, Colorado



Type II, 6 ft. Hummer Electric Screen

HUM-MER Electric SCREEN

Makes screening and crushing more profitable. Screens any material, wet or dry, from 2 1/2" opening to minus 200 mesh.

Send for Catalog No. 45-F



THE W. S. TYLER COMPANY

CLEVELAND OHIO
Manufacturers of Woven Wire Screens and Screening Equipment



Mine and Mill Machinery and Supplies

of every description

HARRON, RICKARD & McCONE

139 Townsend St.
San Francisco

CALIFORNIA 225 So. San Pedro St.
Los Angeles

Laboratory Supplies
Fire Clay Products



Metallurgical Furnaces
Oil Burners

THE DENVER FIRE CLAY COMPANY

Denver, Colorado, U. S. A.

El Paso, Texas

Utah Dept., Salt Lake City

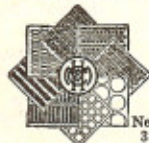
PERFORATED METAL SCREENS

for Every Purpose

Elevator Buckets

Light and Heavy Steel Plate Construction

HENDRICK MFG. CO., Carbondale, Pa.



New York Office
30 Church St.

Hazleton, Pa., Office
705 Markle Bank Bldg.

Pittsburgh, Pa.
544 Union Trust Bldg.

Coxe Stokers — Type E Stokers — New Frederick Stokers A WORLD ORGANIZATION

Completely Covering the Field of Combustion Engineering with Stokers, Pulverized Fuel and Oil Burning Equipment of its own Manufacture:

International Combustion Engineering Corporation

COMBUSTION ENGINEERING CORPORATION

43 Broad Street, New York

QUINN OIL BURNER

GREEN STOKER


LOPULCO SYSTEMS

SCREENS OF ALL KINDS

Chicago Perforating Co.


2445 West 24th Place
Tel. Canal 1459 CHICAGO, ILL.





When you need air, gas, or liquids in known, definite volumes, think first of **ROOTS Rotary Blowers, Gas Pumps, Vacuum Pumps and Pumps for Liquids.** The **ROOTS Positive Displacement Blower** is the original patented in 1859. The R.P.M. is an indication of volume delivered. Write us your requirements today so that we can send you copy of valuable bulletin "ENGINEERING TABLES" Free. Ask for Bulletin J-118.

CHICAGO OFFICE **The P.H. & F.M. ROOTS CO.** NEW YORK OFFICE
 122 S. Michigan Ave. **CONNERSVILLE, IND.** 120-122 Liberty St.



"Sirocco" Fans and "Ventura" Fans for
 Mine Ventilation
 Complete Engineering Service

American Blower

AMERICAN BLOWER COMPANY, DETROIT (255)

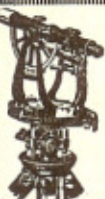


Blowers Exhausters

The Connersville Blower Co.

Connersville, Ind.

Boosters Pumps



AINSWORTH

PRECISION BALANCES AND SURVEYING INSTRUMENTS

WILKINSON & SONS THE PRECISION FACTORY DENVER, COLORADO U. S. A.


Send for Descriptive Literature
 Bulletin A-8 of Balances and Weights
 Catalog B-8 of Surveying Instruments
 Bulletin C-8 of Improved Brunton Transit



GURLEY

ENGINEERING INSTRUMENTS

W. & L. E. GURLEY TROY, N. Y.



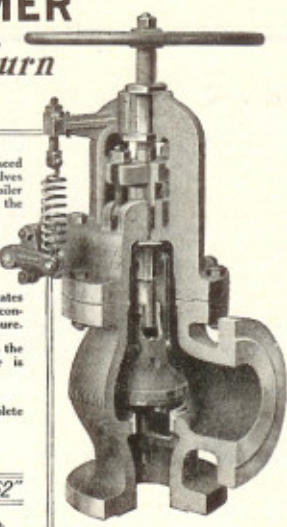
BERGER

Monitor Transits and Levels
C. L. BERGER & SONS, Inc.,
 BOSTON, 20, MASS., U. S. A.

Agents for the States of New York and New Jersey
 New York Blue Print Paper Co.
 102 Rende St., New York City.

LUNKENHEIMER

Safety Non-Return Valves



Positive dependence can be placed upon the prompt closing of these Valves should the pressure within the boiler suddenly drop below that in the header.

There being no internal dash pot, the disc is free in action and does not stick or bind. Chattering is eliminated by the outside spring mechanism which facilitates instant adjustment to meet any condition while the valve is under pressure.

Efficient prolonged service with the utmost economy of maintenance is assured.

Booklet 525BK contains complete information. Write for a copy.

"America's Best since 1862"

THE LUNKENHEIMER CO.
 LARGEST MANUFACTURERS OF
 HIGH GRADE ENGINEERING SPECIALTIES
 IN THE WORLD.
 NEW YORK CHICAGO CINCINNATI U. S. A. LONDON
 EXPORT HEAD OFFICE: LIVERPOOL, ENGLAND.



10-22-20 *Essential for the safe operation of boilers connected in battery*

POWELL VALVES

The Wm. Powell Co. Cincinnati, Ohio



MERCO NORDSTROM PLUG VALVE MERRILLITE

Send for Bulletins
THE MERRILL COMPANY
 SAN FRANCISCO NEW YORK
 121 Second St. 110 West 40th St.
 HOUSTON CHICAGO
 613 Washington Ave. 1631 Monadnock Block

THERMOLITH

FIRE CEMENT

"Makes the Weakest Point the Strongest"

HARBISON-WALKER REFRACTORIES CO.
 World's Largest Producers of Refractories U.S.A.
 Pittsburgh, Pa.

"CRANDALLIZE AND ECONOMIZE"

CRANDALL PACKING COMPANY

PALMYRA, N. Y.