

REFLECTORS

Aluminum, Polished Brass, Nickel Plated, Red Enameled

New Aluminum Types

These reflectors are made of a special alloy which takes a high finish and is easily kept bright. This material is break, bend and dent proof. These reflectors weigh no more than a good stamped brass reflector.

No.	Description	List Price
No. 12.	For No. 15 and 240 Sun-Ray Lamps, $\frac{5}{16}$ diameter $\frac{7}{16}$ in. with sparker complete	Each \$0.40
	Without sparker	Each .30
No. 6.	For No. 150, 160, 203 and 205 I. T. P. Lamps 3 inch diameter, 1 inch deep with sparker complete	Each .55
	Without sparker	Each .45

Brass Reflectors

In sheet brass reflectors, we make two types, flat and deep. The flat is recommended for diffused light, the deep for concentrated light. The deep types serve to protect the flames against cross air currents.

No.	Diam.	Deep	Finish	List Price With Sparker	Each Without Sparker
3	3	1 $\frac{1}{4}$	Nickel Plated	\$0.35	\$0.25
5	3 $\frac{1}{4}$	$\frac{3}{4}$	Polished Brass	.35	.25
5	3 $\frac{1}{4}$	$\frac{3}{4}$	Nickel Plated	.35	.25
8	2 $\frac{3}{4}$	$\frac{1}{2}$	Polished Brass	.25	.15
11	2 $\frac{3}{4}$	$\frac{3}{8}$	Nickel Plated	.20	.10
10	5	2 $\frac{3}{4}$	Nickel Plated	2.00
Locknuts for Reflectors. List Price			05

Red Enameled Reflector

For No. 200 I. T. P. Trip Lamp

This reflector is made of steel and finished with Red (baked on) Enamel and measures 4 $\frac{1}{2}$ in. diameter by 1 $\frac{1}{2}$ in. deep.

List Price Each \$0.50

Carbide Mine Lamps

FLOAT  FEED
IT'S TROUBLE-PROOF

HAND
LAMPS

TRADE
MARKS

CAP
LAMPS

 SUN-RAY

Cable Address
DEWMANCO NEW YORK

DEWAR MANUFACTURING CO.

28-34 THIRTY-FIFTH STREET

BROOKLYN, N. Y.

SCRANTON, PA.
Board of Trade Bldg.

77 YORK STREET
TORONTO 2-088

NEVER
RAKE

FLOAT

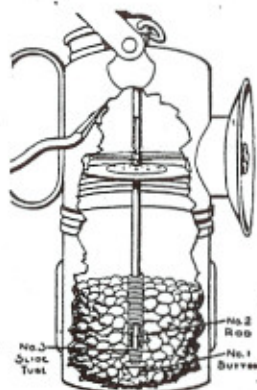


FEED

NEVER
REGULATE

WORKS WITHOUT WATCHING

The Operation of the ITP is as Follows:



When the carbide container is filled in the usual way (about one-half full) it is screwed to the water tank. In doing this the button, No. 1, is pushed into the carbide, the downward taper of the button serves to push aside the carbide lumps, thus allowing Slide tube No. 3 to follow the button to the bottom as shown in the illustration.

When carbide comes into contact with water it decomposes (slakes) and forms a sludge which tends to clog up the water outlet at the end of tube No. 3—but, also at the same time slaking carbide expands and as it does it causes slide tube No. 3 to move upwards gradually. As the tube is lifted the sludge is cracked, broken up, clearing the end of the tube, thus permitting the water to flow and always reach the

unslaked carbide.

Most carbide lamp troubles are due to the slaking carbide sealing the end of the water tube and cutting down the water supply, which shortens the length of the flame.

So then the real problem is to keep the end of the water and slide tube clear of slaked carbide.

The regulation of water supply has been so carefully balanced in the I. T. P. that the flow is automatically checked when the pressure reaches four inches, and automatically started when the pressure drops below two and a half inches; gas supplied between those pressures will produce a fine working light.

There are no wires to jiggle, no screws to set, no valves to regulate. There is a valve 'tis true, but its purpose is simply to start or stop the water supply; turning this valve in no manner affects the size of the flame or its brilliancy.

Agitate an ITP, jar it in any manner, or drop it, if you will, still the size of the flame will not change; it will not flare, nor will it grow dim. Under every condition, the flame burns as steadily as the electric light over your desk.

CONTENTS

**Hand Lamps
I. T. P. Float Feed**

	Page
No. 205	2
No. 2051	4
No. 2052	4
No. 2053	4
No. 210	14

**Hand Lamps
For Superintendents
I. T. P. Float Feed**

	Page
No. 203	3
No. 2034	5
No. 150	6
No. 160	7
No. 240 *SUN*RAY*	17

**Hand Lamps
Baldwin Feed**

	Page
No. 36	15
No. 34	15
No. 52	15
No. 58	15

Cap Lamps

	Page
No. 15	16

**Special Lamps
For Emergency or Repair
Crew Use**

	Page
No. 215	12
No. 2151	9
No. 2155	8

**Trip-Signal
or Mine Car Lamps**

	Page
No. 200	13

Repair and Spare Parts

	Page
Burners	18-19
Burner Cleaners	20
Burner Reamers	20
Cap Clips	18
Carbide Cans	21
Candle Sticks	21
Flints (sparking metal) ...	21
Felts	20
Gaskets	20
Reflectors	22
Repair Parts	19
Sparker Parts	21
Valves	19
Wind Shields	18

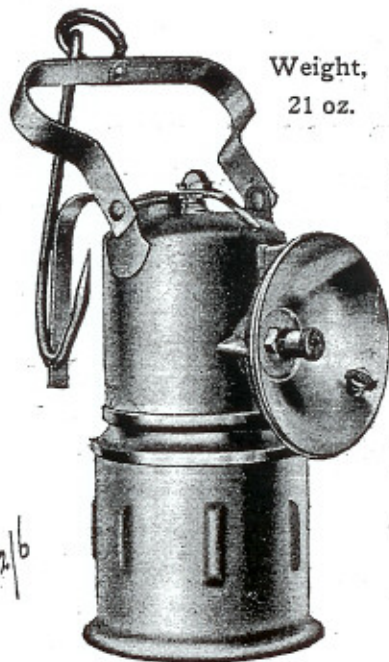
Descriptive Pages 10 and 11.

RUNS 9
HOURS
ON
ONE
CHARGE

FLOAT  FEED

WIND
DRIP
AND
SHOT
PROOF

WORKS WITHOUT WATCHING



No. 205

Lamp body made of drawn steel, which is heavily tinned and rust-proof. The screw shells, water cap, bail handle, and valve are made of brass. The ears and hook are welded.

List Price, \$4.50 Each

We can, if desired, furnish this lamp made entirely of "brass"—List Price, \$5.00.

Weight,
21 oz.

Height

To top of lamp, 6½ inches.
To top of Bail, 9¾ inches.

Regularly equipped with full shift 9 hour container. We can if desired furnish with ½ shift 4½ hour container.

Aluminum Reflector
3 inch diameter, 1 inch deep

Sparker Lighter

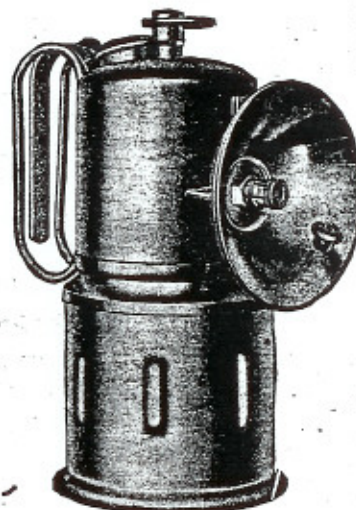
This lamp when equipped with a full shift container will run for 9 full hours. During that time all the attention it will require is the replenishing of the water supply. It is never necessary to hand rake, regulate or adjust.

RUNS 9
HOURS
ON
ONE
CHARGE

FLOAT  FEED

WIND
DRIP
AND
SHOT
PROOF

WORKS WITHOUT WATCHING



No. 203

Lamp body made of drawn steel, which is heavily tinned and rust-proof. The screw shells, water cap and valve are made of brass; the hook at back is welded.

This lamp will run for 9 full hours on a charge of carbide weighing 7½ ounces.

List Price, \$4.50 Each

We can, if desired, furnish this lamp made entirely of "brass"—List Price, \$5.00.

Height, 6½ inches.

Weight, 19 ounces.

Burning capacity — 9 hours.

Aluminum Reflector, 3 inch diameter — 1 inch deep, with Sparker, (self lighter.)

Regularly equipped with full shift 9 hour container. We can if desired furnish with ½ shift, 4½ hour container.

This lamp when equipped with a full shift container will run for 9 full hours.

It is never necessary to hand rake, regulate or adjust.

50
CANDLE
POWER

FLOAT



FEED

WIND
AND DRIP
PROOF

WORKS WITHOUT WATCHING

Height to Lamp Top,
6½ inches
Height to Bail Top,
12 inches
Weight of Lamp, 1¼ Lbs.
Burns 9 hours on one charge

Reflector Nickel Plated
Braced at Sides
4½ inch Diameter,
1½ inch Deep

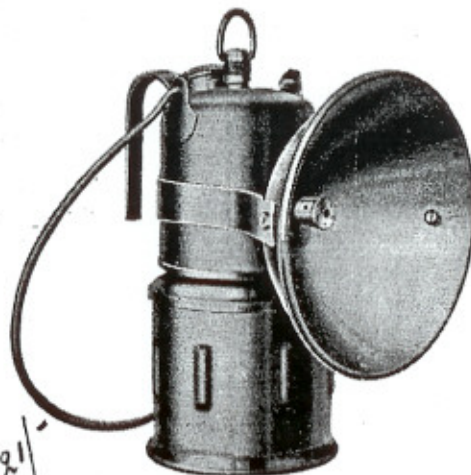
**OPTIONAL
EQUIPMENT**

No. 2051
Lamp as illustrated
with No. 14
Reflector.
List Price, \$5.25

No. 2052
As shown, but
equipped with No.
6 Reflector as
shown on page 2.
List Price, \$4.50

No. 2053
As shown, except-
ing the addition of
base at bottom of
carbide container
as shown on page
8.
List Price, \$5.50

This lamp will run for 9 full hours. During this time, all of the attention it will require is the replenishing of the water supply. Hand raking, regulating, or adjusting is never necessary.



No. 2051

RUNS 9
HOURS
ON
ONE
CHARGE

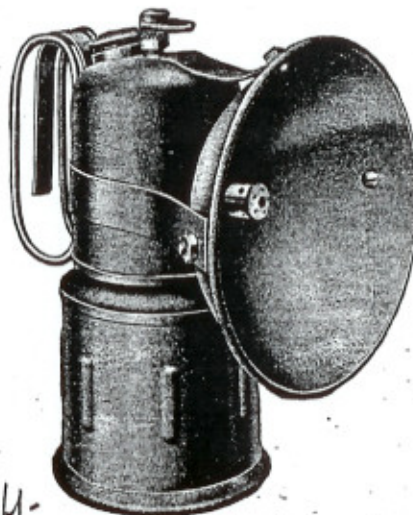
FLOAT



FEED

WIND
DRIP
AND
SHOT
PROOF

WORKS WITHOUT WATCHING



No. 2034

Lamp body made of drawn steel, which is heavily tinned and rust-proof. The screw shells, water cap and valve are made of brass; the hook at back is welded.

This lamp will run for 9 full hours on a charge of carbide weighing 7½ ounces.

List Price, \$6.00 Each

We can, if desired, furnish this lamp made entirely of "brass"—List Price, \$7.00.

Height, 6½ inches.
Weight, 19 ounces.

Burning capacity —
9 hours.

Spun brass, Nickel
plated reflector — 4½
inches diameter by 1⅞
inches deep — braced
top and sides by steel
bands.

Regularly equipped with
full shift 9 hour container.
We can if desired furnish
with ½ shift, 4½ hour
container.

This lamp when equip-
ped with a full shift con-
tainer will run for 9 full
hours.

It is never necessary to
hand rake, regulate or ad-
just.

POLISHED
NICKEL

FLOAT



FEED

WIND
PROOF

WORKS WITHOUT WATCHING

SUPERINTENDENT'S LAMP

Aluminum Reflectors

3 inch diameter,
1 inch deep

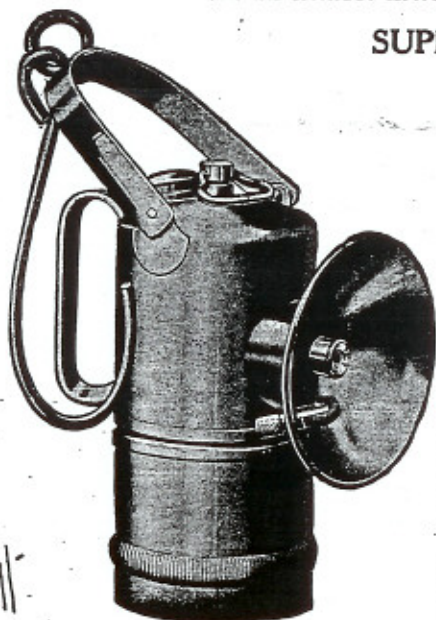
Height to top of bail,
7 inches.

Weight, 12 ounces

Burns 6 hours.

Our patented Wind Shield furnished with each lamp. This device makes the lamp wind, drip and shot proof.

The lamps are made of heavy seamless drawn brass, heavy screw threads, all parts nickel plated and polished.



No. 150

Due to positive water control, which keeps gas pressure constant, never dropping below $2\frac{1}{2}$ inches or ever exceeding $4\frac{1}{2}$ inches, there is never excess generation; hence, these lamps will give more hours of light for a given quantity of carbide than others. Tests show the saving to be never less than 20% and very often as much as 30%.

List Price, \$4.00 Each

POLISHED
NICKEL

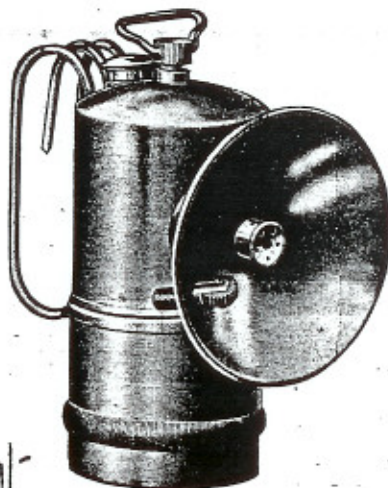
FLOAT



FEED

WIND
PROOF

WORKS WITHOUT WATCHING



No. 160

SUPERINTENDENT'S LAMP

List Price, \$3.50 Each

Aluminum reflector 3 inch diameter—1 inch deep.

Height of lamp $5\frac{1}{2}$ in.

Weight 11 ounces

Burning capacity — 6 hours

Equipped with Sparker, (self lighter)

Our patented Wind Shield furnished with each lamp. This device makes the lamp, wind, drip and shot proof.

The lamps are made of heavy seamless drawn brass, heavy screw threads, all parts nickel plated and polished.

These lamps positively require no hand regulation. The ITP Float Feed automatically controls the water supply, regulates the flame size and rakes the carbide. Once the lamp is charged and lighted no further attention is required until a fresh charge of carbide is needed.

No. 2155 Enclosed Flame EMERGENCY LAMP

Height to Lamp Top, 8 inches

Height to Handle Top,
11 inches

Height to Bail Top, 18½ inches

Flat Flame Burner, enclosed in
brass housing, glass front.
Nickel Plated Reflector.

Handle, ¼ inch Band Steel
Welded to Lamp. Holes at
back to hang lamp to wall.

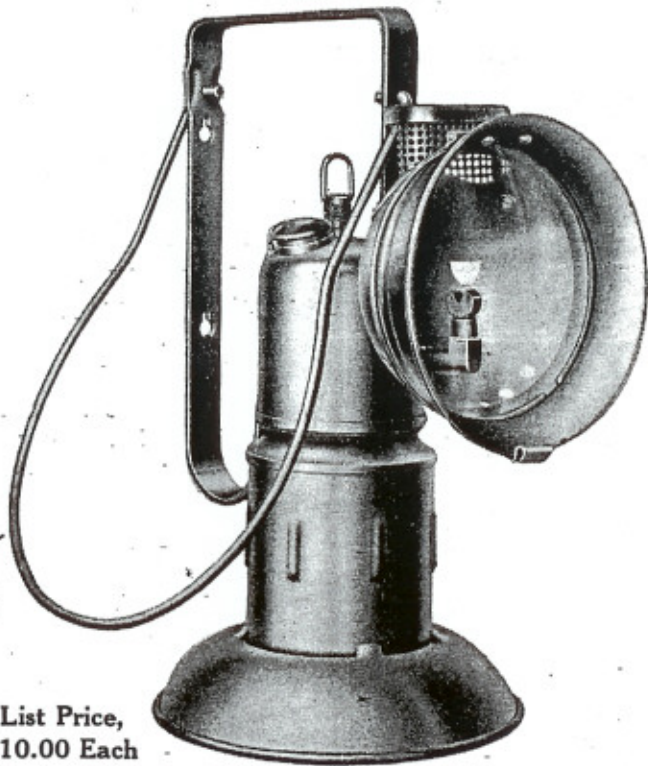
Base Welded to Lamp,
5¾ inches in diameter.

Weight of Lamp, 2¾ pounds.

Burns 8 hours on one charge.

100 Candle Power

Wind and Weather Proof



341
List Price,
\$10.00 Each

No. 2151 EMERGENCY LAMP

Height to lamp top, 8 inches
Height to handle top, 11 inches
Height to bail top, 18½ inches

Base welded to lamp,
5¾ inch diameter

Weight of lamp, 2½ pounds

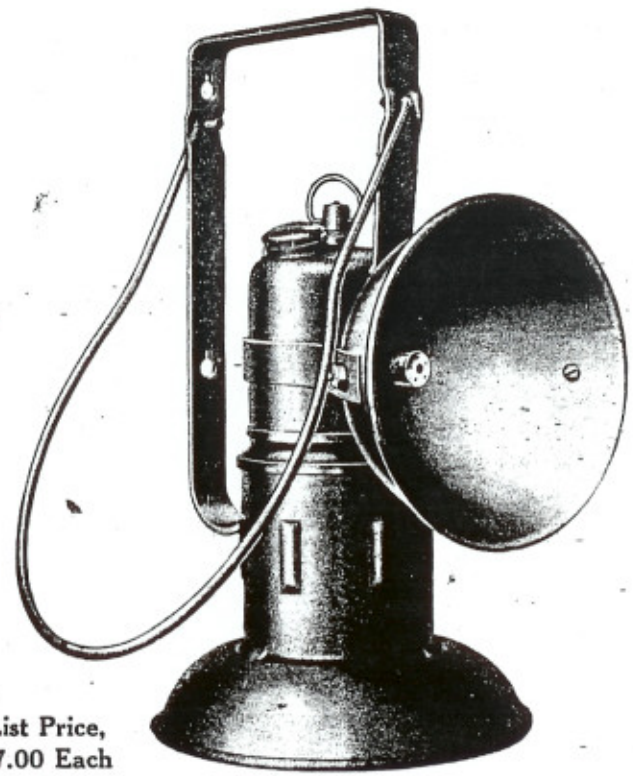
Reflector, nickel plated
braced at sides.
4½ in. diameter, 1½ in. deep

Burns 10 hours on one charge.

Handle ¼ inch band steel weld-
ed to lamp, holes at back to
hang lamp to wall.

50 Candle Power

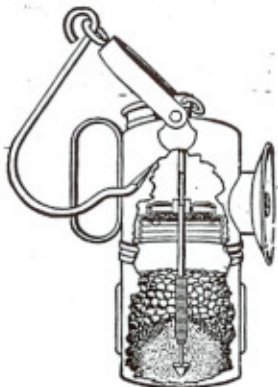
Wind and Drip Proof



311
List Price,
\$7.00 Each



When water tank is screwed to the carbide container the button No. 1 pushes aside the carbide lumps, allowing slide No. 3 to follow the button as shown in the illustration.



As the slaking process continues the slide tube continues to raise. Each time the tube is lifted the sludge is broken up and end of tube cleared, thus water can always reach the fresh carbide.

Reflectors—Break, Bend and Dent Proof

The No. 15 *SUN*RAY* and Nos. 150, 160, 203 and 205 I.T.P. are now equipped with our HA-MER-IT Reflectors. These reflectors are made of a special aluminum alloy, which lends itself to a high polish and with occasional cleaning (it polishes easily) can be kept permanently bright, as there is nothing to wear away as with a plated reflector.

The HA-MER-IT is practically break, bend, dent, and accident proof. A smash up against the roof, hard enough to wreck an ordinary reflector or a fall that would put a sheet metal reflector out of business, would hardly scratch the HA-MER-IT. Despite its wonderful strength, the HA-MER-IT weighs no more than the ordinary sheet metal reflector used by others.

Our Patented Detachable Cap Clip

Instead of equipping our No. 15 *SUN*RAY* cap lamp with flat brass clip or spreader wire, we furnish a No. 75 cap clip with each lamp. The clip holds the lamp securely and lamp can be snapped into place or removed with the greatest ease.

Wind, Drip and Shot Proof

Any of our lamps, excepting No. 210 I.T.P., can be equipped with our patented Wind Shield. When thus equipped, the lamps are proof against the heaviest air currents ever met with inside a mine. This shield, as well, protects the flame against overhead drip and the flame will not be extinguished if lamp is used where there is heavy concussion due to shot firing.

Non-Leaking Water Lid

Every user of other carbide cap lamps has had water trickle down his back or face. This water bubbles out of the hole in the water lid when the miner bends over or is looking up to the roof. This will never happen to the user of a *SUN*RAY*. Water never bubbles out of the hole in the top of water lid no matter how the miner turns his head.

Water Supply and Gas Production—Automatically Regulated

Neither the Sun Ray nor the I.T.P. ever require hand regulation or adjusting. There are no valves to be set, no regulators to adjust, no wires to fuss with. It is never necessary to rattle or shake these lamps in any manner. Once they are charged and lighted, no further attention is required until a fresh charge of water or carbide is required.

Always a Steady Even Light

The flame burns as steadily as a jet of city gas and as flickerless as an electric bulb. The flame size is maintained until the last atom of gas has been given up by the slaking carbide.

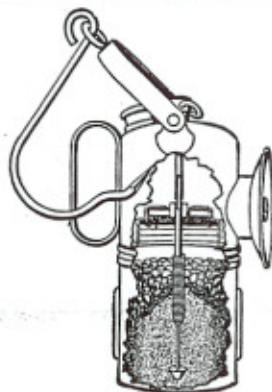
Agitating or jarring the lamp will not affect the size of the flame—even dropping the lamp will not cause pressure increase nor cause the lamp to blow or flame to flare.

More Light—Less Carbide

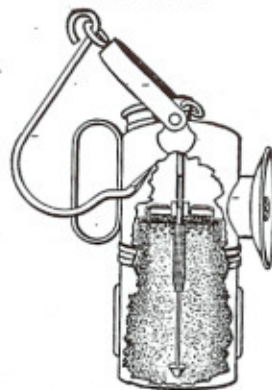
Other carbide lamps must be hand raked and regulated. When they are the carbide is rather violently agitated and an excess of water reaches it; when this happens, there is a jump in pressure; this frequently reaches 16 inches. The instant the pressure exceeds 6 inches, gas is forced up through the water tube and escapes at the water lid, all of this gas is wasted.

The pressure in the Sun Ray and I.T.P. never exceeds 5 inches. It rarely exceeds $4\frac{1}{2}$ inches, hence never any waste.

The low pressure point in other lamps is about 1 inch. The low pressure point in a Sun Ray or I.T.P. is about $2\frac{1}{2}$ inches. When the pressure runs below 2 inches, the flame becomes sluggish, yellow in color, and has but little illuminating value.



When carbide comes into contact with water it decomposes (slakes) and forms sludge which cements the end of slide tube No. 3, but at the same time slaking carbide expands; as it does it forces the slide tube upwards as shown above.



In other lamps the water delivery point is always at the bottom of the slaked mass; entirely different in this lamp, the water is always delivered near the unslaked carbide; thick pasty sludge is not found, consequently it is easier to clean this lamp.

30
Candle
Power

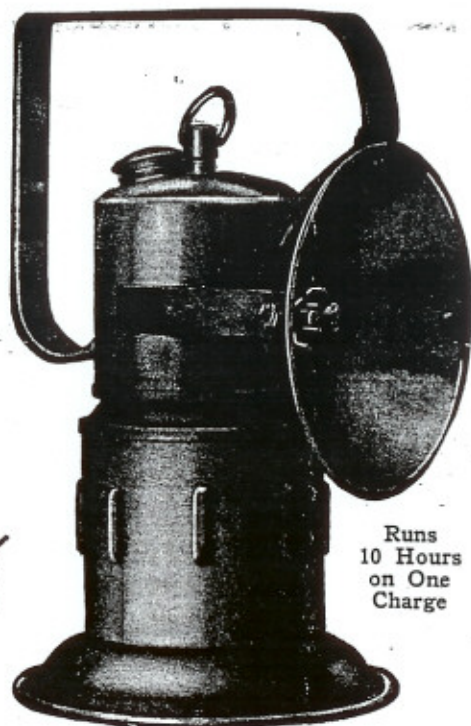
FLOAT  FEED

Bright
White
Light

Emergency Lamp

FOR REPAIR WORK

REFLECTOR—Nickel plated, braced sides and top.
HANDLE—Heavy band steel welded to lamp.
BASE—1½ inch clearance at bottom, permitting lamp to set securely on uneven surfaces.



21/-

Runs
10 Hours
on One
Charge

Dimensions

Weight
2½ pounds.

Height
over all
9½ inches.

Handle
¾ inch
Band Steel.

Base
5¾ inches.

Reflector.
Diameter
4½ inches
Depth
1½ inches

Wind and
Drip Proof.

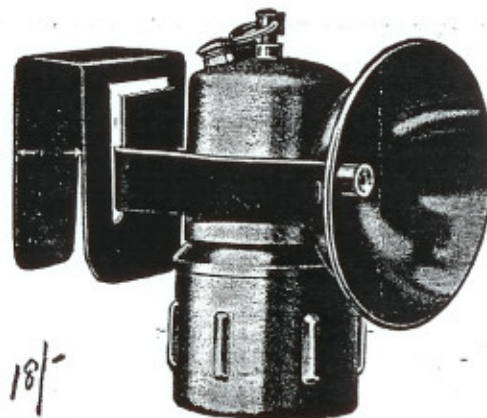
No. 215. List Price, \$6.50

THE LAMP WITH THE BIG RED GLARE

USED AS A WARNING LIGHT
ON FRONT OR REAR OF TRIP

Also used at switches, cross-overs, low-hanging trolley wires
and other danger points.

BURNS FOR 9 HOURS
ON ONE CHARGE OF CARBIDE



18/-

No. 200

CHEAPER
THAN OIL

WIND
PROOF

NO GLASS
TO BREAK

Red Enameled
Reflector

1½ inches deep
4½ inches diameter

Its field of view
is great and its
brilliant "Red
Rays" catch the eye
of the track walk-
er in time to give
him ample oppor-
tunity to get out of
the way of the ap-
proaching trip.

Brackets furnished to fit any wooden or steel mine
car. Lamp attaches to bracket by means of a one inch
steel band welded to body of lamp. This fits into a
tongue on bracket. When ordering give width of bracket
desired as indicated by arrows on illustration.

The lamp is positively automatic in its action, you
never need to rake or shake it, aside from recharging
with water at the end of 4 hours, it requires no attention
after it is lighted until a fresh charge of carbide or water
is needed.

List Price\$6.00 Each

WIND
PROOF

FLOAT **TIP** FEED
ITS TABLE-PROOF

DRIP
PROOF

WORKS WITHOUT WATCHING

Burns 6 Hours

Drip Cap

This is made of heavy metal reinforced, and fastened to reflector brace by a screw nut. This cap protects the flame from over head drip.

**FLAT
FLAME
BURNER**

Burner Protector

This is made of brass, threaded and can be removed for cleaning or changing tip. Protects the flame from air currents.

Reflector

Made of brass, nickel plated. Bolted to base. Equipped with sparkler lighter.

Burner

We use a special burner. There is but one hole in this, still it produces a flat flame. This burner will not carbonize and it is much easier to clean than the two hole burner.

No. 210

When a more powerful light is required, or where a more general distribution of light is desired we recommend the No. 210. This lamp is equipped with the I. T. P. Float Feed. This feed automatically regulates the gas production and while a flat flame burner will consume more gas than the burners used in our other lamps, the feed so accurately governs the production that the flame produced is full size until within 5 minutes of the time the charge is used up. There is never any over generation and the flame does not flare or blow.

List Price, \$5.00 Each.



151-



Nos. 52 and 34

91-

These lamps are equipped with the well-known and time-tried "Baldwin Straight Wire Feed." The principal advantages of this feed are simplicity, few parts, and ease of cleaning.

No. 52—Equipped with handle, bail and hook. Made of drawn steel, double tin dipped, rust proof; ears electrically welded, handle oxy-acetylene welded. Screw threads, water lid and feed parts made of brass.

No. 5 Reflector—3 1/4 inches diameter, 3/4 inch deep, made of brass, nickel plated. Equipped with sparkler lighter. Burns 6 hours on one charge.

No. 52. Height to top of bail 9 3/4 inches, to top of lamp 6 inches, weight 19 ounces. List Price, \$3.00

No. 34—Equipped with handle, bail and hook. Made of galvanized iron; the screw threads, top and bottom of water tank, water lid and feed parts are made of brass.

No. 7 Reflector—2 1/2 inches diameter, 1/2 inch deep; made of tin, equipped with sparkler lighter. Burns 5 hours on one charge.

No. 34. Height to top of bail 9 1/4 inches, to top of lamp 6 inches, weight 11 ounces. List Price, \$2.25

No. 58—Equipped with hinged wire handles at the back, suitable for use by superintendents, engineers, mine bosses, etc. Made of drawn steel; double tin dipped, rust proof. Screw threads, water lid and feed parts made of brass. Burns 6 hours on one charge.

No. 3 Reflector—3 inches diameter, 1 1/4 inches deep; made of brass, nickel plated, and equipped with sparkler lighter.

No. 58. Height 6 1/2 inches, weight 17 ounces. List Price, \$3.00

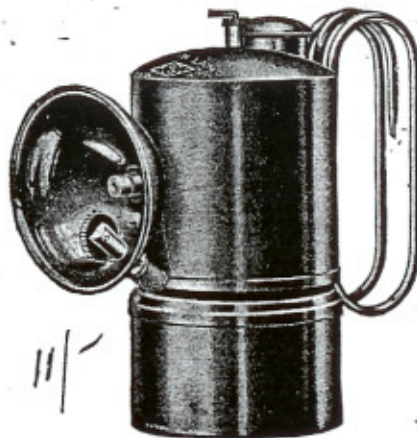
No. 36—Equipped with hinged wire handles at the back. Made of galvanized iron; the screw threads, top and bottom of water tank, water lid and feed parts are made of brass. Burns 5 hours on one charge.

No. 3 Reflector—3 inches diameter, 1 1/4 inches deep; made of brass, nickel plated, and equipped with sparkler lighter. This lamp is suitable for use by superintendents, engineers, mine bosses, etc.

No. 36. Height 6 1/2 inches, weight 12 ounces. List Price, \$2.25

Burning capacity No. 52 or 58, 6 hours. These lamps come equipped with our patented Wind Shield.

Burning capacity No. 34 or 36, 5 hours.



Nos. 58 and 36

111-

LIGHT
WEIGHT

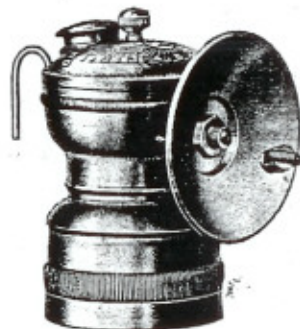


WATER CAP
WON'T LEAK

EQUIPPED
WITH



FLOAT
FEED



Round—No. 15—Hook
Wgt. 5 oz.—Nickel finish—
Height 3½ inches—Burn-
ing Capacity, 3 hours.

Cap Hooks
The illustration shows the round wire hook. Unless otherwise specified, round wire hook will be supplied. We can, however, on order, and at no extra charge, equip these lamps with Flat Brass Hooks.

Reflectors

The illustration shows our No. 12 Aluminum Reflector; this is our regular equipment. We can, on order, and at no extra expense, equip with brass reflectors, 2¾ inch diameter; these finished either polished brass or polished nickel finish. Each lamp packed in a separate carton—12 lamps in a large carton and 2 gross of lamps to a case.

Float Feed: This feed automatically regulates the water supply and rakes the carbide. No hand regulation or raking ever required. Burns out the complete charge of carbide without the need of any attention and without waste.

Steady, Even Flame: The flame size remains the same from start to finish of charge. A bright, steady light until the last grain of carbide is used.

Non-Leaking Water Cap: A diaphragm inside the water cap holds in check any water that may leak out of the tank. Water will not bubble out of the cap even when water valve is wide open. Water will not leak if lamp is held top side down. This cap positively overcomes the old trouble of water trickling down the miner's back or face.

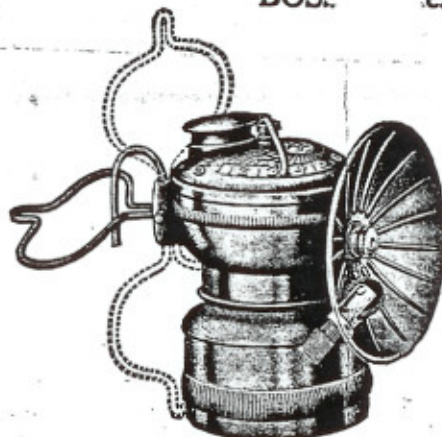
List Price, \$1.50 Each

Each Lamp equipped with Sparker Lighter.



For SUPERINTENDENT
BOSS

ENGINEERS, SHIFT
c.



No. 240
The lamp with the Han-de-Han-del

EQUIPPED
WITH



FLOAT
FEED

The Han-de-Han-del is adjustable to 3 positions, making it possible to use this as a Hand or Cap Lamp. Lamp can be suspended from coat button, carried on belt, hung from a nail. Handle can be jammed into a rock crevice or crack in a timber.

This lamp is furnished with our No. 11 polished nickel reflector which is 2½ inches in diameter. Reflector equipped with sparker lighter.

Each lamp equipped with our patented wind shield. This device makes the lamp wind, drip and shot proof.

Our Cup Feed automatically regulates the water supply and rakes the carbide. No hand regulation or raking ever required. Burns out the complete charge of carbide without the need of any attention.

Steady Even Light: Flame size remains the same from start to finish of charge.

Non-Leaking Water Cap: Water will never leak out of cap and trickle down user's face or back.

Sun-Ray burners used on Sun Ray lamps are easily taken out or replaced.

List Price, \$2.00 Each

Nickel Plated.

Sparker Lighter.

Equipped with wind shield. Makes the lamp wind, drip and shot proof.

Steady, Even Light.

Non-Leaking Water
Cap:

Capacity 3 hours.

***Sun*Ray*Burner**



Made of brass, with lava insert. Very easy to take out of lamp or replace.

List Price, Per Dozen, \$0.50

No. 76
Wind Shield
Patented



List Price, Per Dozen, \$1.20

No. 75 Detachable Cap Clip
Patented



Takes the place of old style spreader wire. Can be used on Cap, Lapel of Coat or Belt.

This clip takes the place of the spreader wires on the lamp. When used on the regulation miners cap the clip snaps on to the tin shield. When used on a hat the snaps can be cut off and clip fastened to hat by means of rivets or staples and in this same manner the clip can be fastened to the lapel of the coat if lamp is to be used suspended from button hole in the lapel. Holds the lamp securely. Lamp can be snapped into place or removed with greatest care.

List Price\$0.10 Each

Kra-Ker-Jak Burners



Made of Imported Lava. Fits all makes of lamps.

List Price, per dozen, \$0.30

Lava Burner



No. 7

REPLACEMENT PARTS

Part No.	Part Name	List Prices	
		Cap Lamps	Hand Lamps
2	Wire Rods	\$0.10 ea.	\$0.10 ea.
3	Water tank lid10 ea.	.10 ea.
5	Burner Tubes.....	.10 ea.	.10 ea.
10	Strainers Metal05 ea.	.10 ea.
13B	Carbide Containers25 ea.	1.00
15	Valves Complete30	.25
16	Valve Stems only15	.10
17	Bail and Hook30
18	Hook for bails15
19	Coil spring slide tubes.....		.15

FLAT FLAME BURNERS



Scotch thread



Can furnish any in 1/4, 1/2 or 3/4 foot size.

Scotch Thread. List price	Each, 25c
Slip Socket. List price	Each, 25c
Roni. List Price	Each, 50c
Twin Jet. List Price	Each, 30c

AIR PASSAGE



Roni



Twin Jet



Burner Protector

This burner protector completely houses in all flat flame burners listed above—Protects burner when lamp is accidentally dropped—easily removed.

List PriceEach \$0.20

PARTS FOR No. 200 TRIP LAMP

Car bracket. List Price	Each \$0.40
Reflector. List Price	Each .50
Carbide container. List Price	Each .50

DEWAR RED RUBBER GASKETS



No. 12

These gaskets are made (for us) under our special formula and contain very little sulphur. Too much sulphur causes rubber to age and harden rapidly. An excess of sulphur is shown when a white frost like powder appears on the surface of the gasket. This powder never appears on our gaskets. The color never changes and gaskets will remain soft and pliable for several years, whereas the white or gray gasket hardens

in a few months. As our gaskets cost no more, always insist on getting Dewar Red Rubber Gaskets. Packed 12 to a box.

For Cap Lamps Per dozen \$0.35
For Hand Lamps Per dozen 1.20



No. 9

All Wool Strainer Felts Chemically Tested

For Cap Lamps, 1½ in. diameter
List price, per dozen.....\$0.35

For Hand Lamps, 1¾ in. diameter
List price, per dozen.....\$0.40

No. 62 Burner Cleaner



Wires can be used as a brush to remove surface dirt, or a single wire used separately to clean the gas outlet.

For all Lamps

List Price Per dozen \$0.60

No. 65 Reamers, Imported Swiss Steel



For all Burners

List price Reamers only per dozen.....\$0.60
We can furnish packed 12 reamers in a metal nickel plated tube.
List price per tube and 12 reamers.....\$0.65
Empty Tubes, per dozen..... .60

SPARKERS AND PARTS

Screw Cap



No. 8C

Sparker Complete



No. 8

Springs



No. 8B

	List Price
No. 8 Sparker Complete	\$1.20
No. 8B Sparker Spring35
No. 8C Sparker Screw Cap60



Flints—Sparking Metal

Each flint packed, in an air tight capsule, these packed 12 to a box and 12 boxes to a container. Flints packed this way can be safely carried in stock for 6 months without showing signs of deterioration.

No. 8A List price per dozen\$0.50



No. 308

Carbide Cans

These made curved (Kidney Shape) so as to conveniently fit hip pocket. Flange top. Capacity 10 oz.

List price\$0.15 Each

Candle Sticks



For Cap Lamps. List Price Each \$0.25
For Hand Lamps. List Price Each .25