

*C. C. Anderson,*

V. A. HALE, President

E. R. JACKSON, V. P. & Treas.

# **Arizona Mining Supply Corporation**

PRESCOTT

**Northern Arizona Distributors**

OF

**Machinery, Equipment and Supplies**

FOR

**Mines - Mills - Contractors - Ranches**

This catalog is published so that we may more efficiently serve **NORTH-ERN ARIZONA**, and is made possible by the greatly increased volume of business we have enjoyed during the past two years, due to the prosperity and industry of this territory.

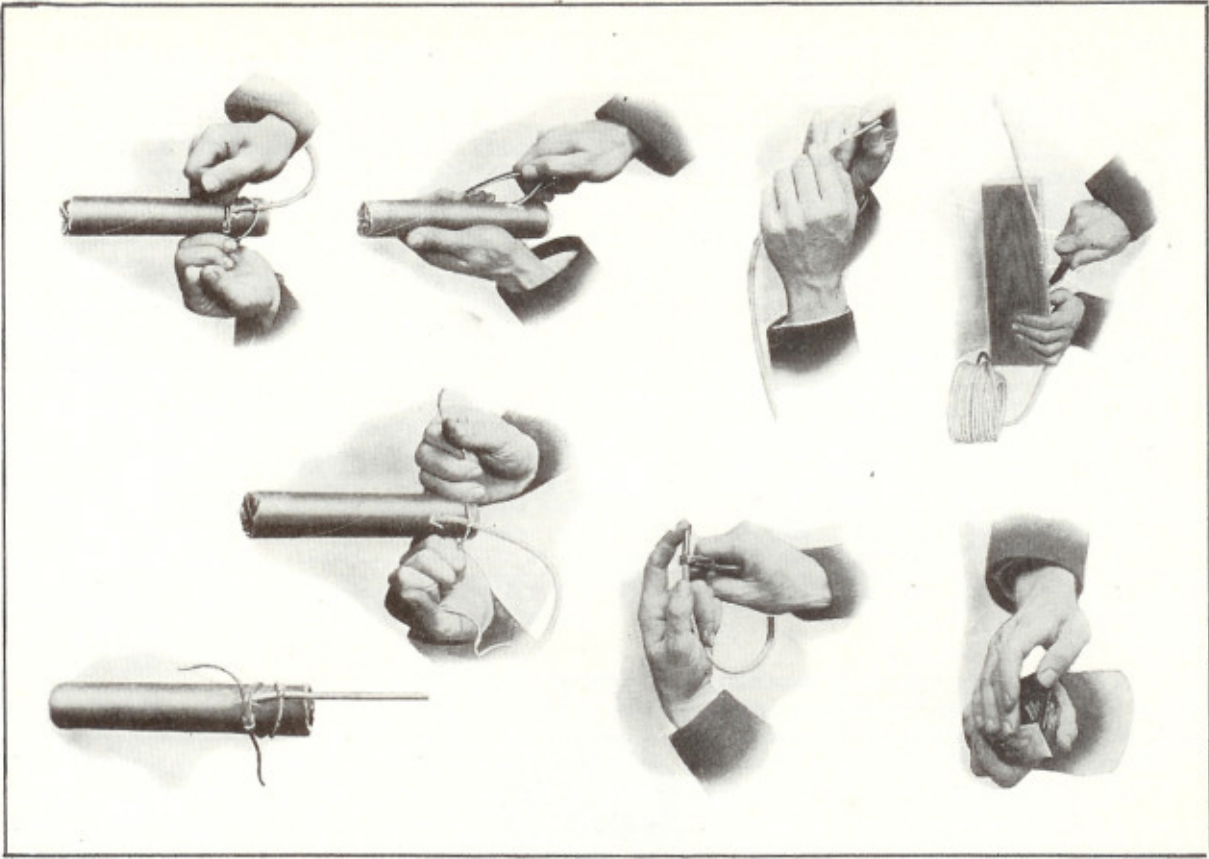
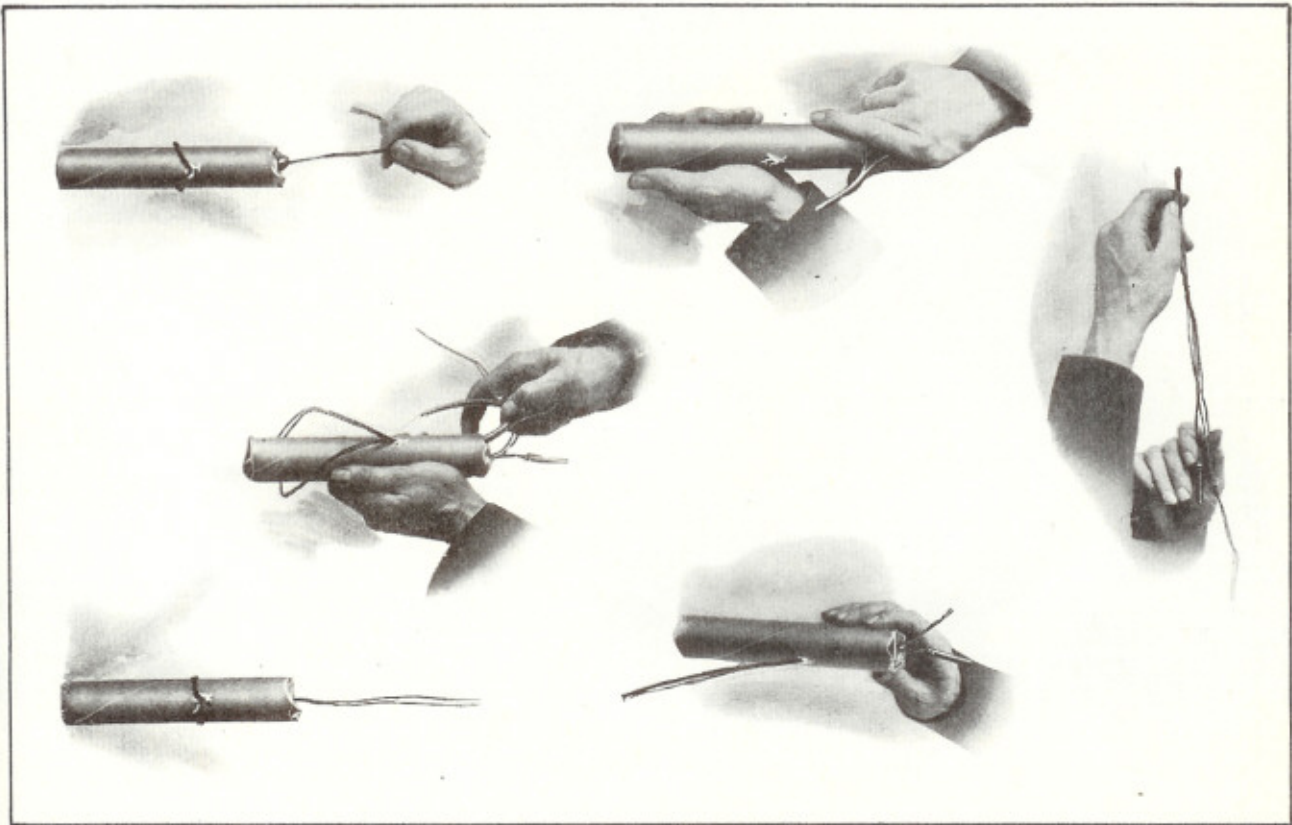
We have carefully built up a competent organization to intelligently and promptly execute all commissions entrusted to us.

Located as we are, we give, with our own delivery service, together with Railroad and Truck Lines, quicker service to **ALL POINTS IN NORTH-ERN ARIZONA** than obtainable from any other source.

In our Equipment and Supply Departments will be found the products of the best known manufacturers; however, this catalog does not show everything that we supply, and orders and inquiries covering special items are solicited.

Arizona Mining Supply Corporation

DU PONT EXPLOSIVES FOR QUARRYING



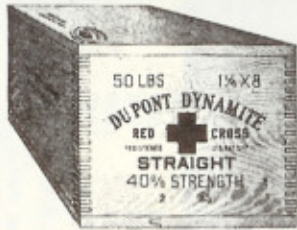
PRIMING WITH BLASTING CAP AND FUSE (FIRST METHOD)

PRIMING WITH ELECTRIC DRAWING CAP

Illustrations of Case and Cartridge Markings of Du Pont Explosives for Quarrying



CASE OF RED CROSS EXTRA DYNAMITE



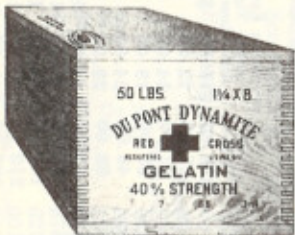
CASE OF RED CROSS STRAIGHT DYNAMITE



CARTRIDGE OF RED CROSS EXTRA DYNAMITE



CARTRIDGE OF RED CROSS STRAIGHT DYNAMITE



CASE OF RED CROSS GELATIN DYNAMITE



CASE OF DU PONT GELATIN DYNAMITE



CARTRIDGE OF RED CROSS GELATIN DYNAMITE



CARTRIDGE OF DU PONT GELATIN DYNAMITE

DU PONT BLASTING ACCESSORIES FOR EXPLOSIVES



Du Pont Thawing Kettle



Coil of Leading Wire



Connecting Wire



Du Pont Galvanometer



Du Pont Duplex Leading Wire



Du Pont Submarine Electric Blasting Cap



Du Pont Electric Blasting Cap



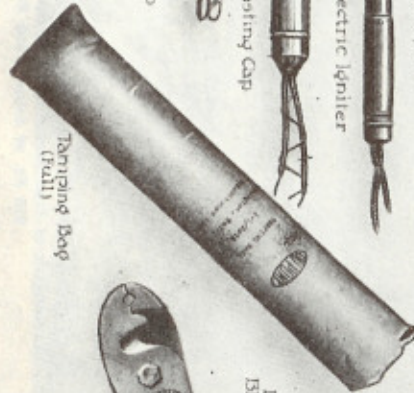
Du Pont Delay Electric Igniter



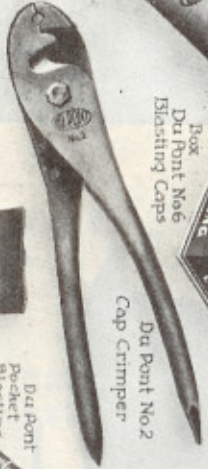
Du Pont Electric Squab



Du Pont Delay Electric Blasting Cap



Tapering Bag (Trails)

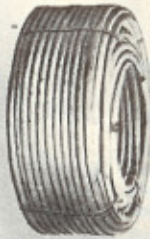


Du Pont No. 2 Cap Crimper



Box of Du Pont Blasting Caps

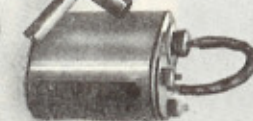
Coil of Fuse



Du Pont Pocket Blasting Machine

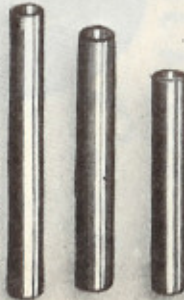


DU PONT RHEOSTAT FOR TESTING BLASTING MACHINES



Du Pont Blasting Machine

Du Pont Blasting Caps

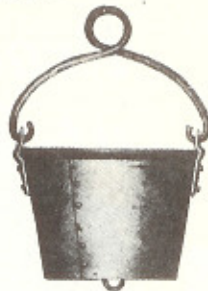


DU PONT EXPLOSIVES FOR QUARRYING

Ore Buckets



No. 8



Nos. 9 and 9 1/2

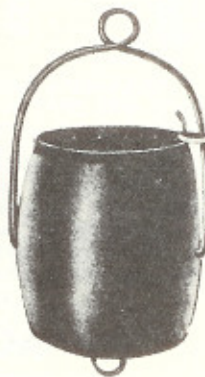
No.	Ht. In.	DIAMETER INCHES		No. of Steel	Cap. Cu. Ft.	Cap. Av. Ore Lbs.	Wt. Lbs.	Wid. Band Price Each
		Top	Bottom					
8	16	16	14	16	1 3/4	200	33	\$10.50
9	15	19	14	16	2	250	35	10.50
9 1/2	23	22	17	14	3	375	55	17.00



Style No. 1



Style No. 2



Center Swing

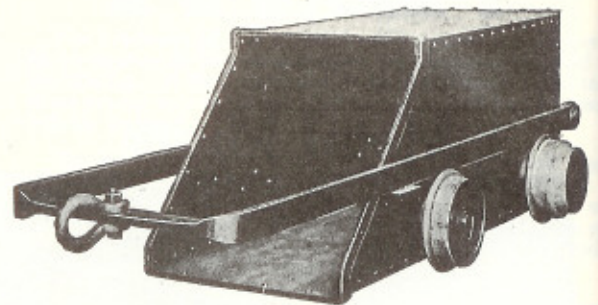
Unless otherwise ordered, balls are made in style No. 1 for Nos. 1, 2 and 3 buckets and in style No. 2 for No. 4 buckets and larger. The bottoms are dished so that they ring to which dumping chain is attached does not prevent bucket from standing upright.

No.	Ht. In.	DIAMETER, INCHES		No. of Steel	CAPACITY			
		Top	Center Bottom		Cu. Ft.	Av. Ore Lbs.	Av. Weight Pound	
1	30	21	24	17	9	6 1/2	750	140
2	30	21	24	17	11	6 1/2	750	125
3	32	24	27	21	8	9	1100	195
4	37	28	34	23	1/4	15	1700	400
5	37	24	28	22	1/4	11	1300	350
6	24	20	22	16	14	4 1/2	550	67
6 1/2	28	20	24	16	14	6	725	75
7	19	17	19	14	16	2 1/2	300	35
10	40	27	32	23	1/4	15 1/2	1800	400
11	48	26	31	22	1/4	17 1/2	2100	425
12	40	26	31	22	1/4	14 1/2	1650	375
13	42	26	31	22	1/4	15	1700	385
14	28	22	28	19	3/8	7 1/2	900	150

No.	STYLES 1 AND 2 BALL			CENTER SWING BALL	
	Without Band	With Band	Extra for Strips on Side	Without Band	With Band
1	\$43.00		\$7.50	\$53.00	
2		\$35.00	7.50		\$45.00
3	53.00	56.00	11.00	60.00	64.00
4	109.00	116.00	15.00	122.00	130.00
5	84.00	90.00	13.00	103.00	109.00
6		24.00	6.00		30.00
6 1/2		30.00	7.00		36.00
7		20.00	4.00		24.00
10	112.00	120.00	15.00	122.00	130.00
11	122.00	126.00	18.00		
12	109.00	112.00	13.00		
13	114.00	118.00	15.00		
14	47.00	50.00	7.00		

Other sizes and weights made to order. Prices upon application.

Ore and Water Skips



Ore and water skips are made in 2 styles. Above is illustrated the Style No. 2 which has the axles for the wheels riveted to the sides.

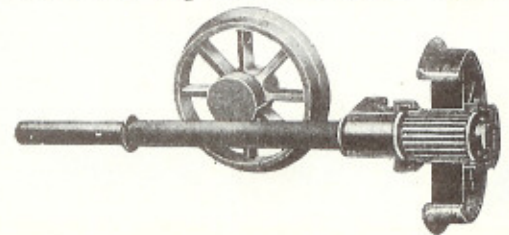
The Style No. 1 is the same as the Style No. 2, except that it has standard axles bolted on the bottom of the skip.

Skips are made to order in any size and style and when ordered for handling water, an automatic valve is furnished, which is placed in the bottom of the car.

When ordering, advise the size and style desired and the angle of the incline from the perpendicular or horizontal.

No.	Capacity Cu. Ft.	Thickness Steel Inches	Approx. Weight Pounds	Price, Each		Extra for Water Valve Each
				Style 1	Style 2	
1	10	3/8	550	\$112.00	\$140.00	\$20.00
2	15	1/4	800	150.00	190.00	20.00
3	20	1/4	1,050	190.00	235.00	30.00
4	25	1/4	1,300	225.00	280.00	30.00
5	30	1/4	1,600	260.00	325.00	30.00

Roller Bearing Coal Mine Car Trucks



The roller bearing mine car truck has been designed to take care of the trade desiring a light running, durable and oil saving truck.

The wheels are made of a high grade tough iron with a deep chill for severe service.

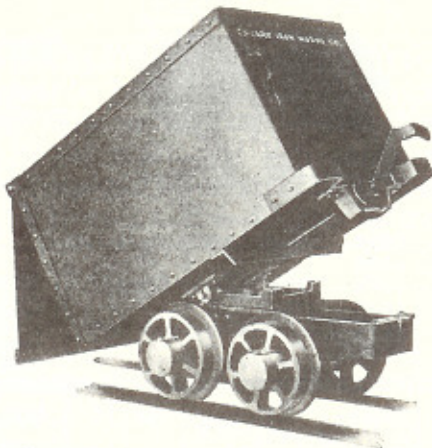
Prices do not include axle clips or steel bushings.

Diameter Inches and Weight of Wheel	Size of Axle Inches	Price, Each			
		GAUGE, INCHES			
		30	36	40	42
12-B	1 1/4	\$35.12	\$35.59	\$35.95	\$36.06
12-B	2	37.48	38.14	38.56	38.80
12-B	2 1/4	41.25	42.08	42.61	42.91
14-C	2	39.95	40.61	41.03	41.27
14-C	2 1/4	43.72	44.55	45.08	45.38
14-C	2 1/2	47.79	48.81	49.47	49.83
14-D	2 1/2	48.54	49.56	50.22	50.58
16-C	2	43.03	43.69	44.11	44.35
16-C	2 1/4	46.80	47.63	48.16	48.46
16-C	2 1/2	50.86	51.88	52.54	52.90
16-D	2 1/2	53.11	54.13	54.79	55.15
16-F	2 1/2	54.61	55.63	56.29	56.65

**Type Z Ore Cars**

The Type Z Ore Car will meet practically all ordinary requirements.

The truck frame is in one piece without any riveted corners to get out of order. It is rigidly held at the bottom by the truck, and at the top by a cast iron, machined grooved, grease lubricated and dirt proof turntable.

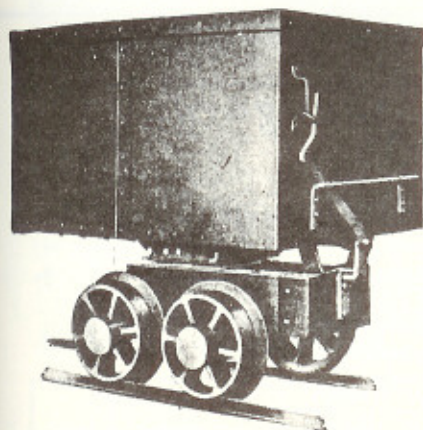


Regularly equipped with standard roller bearing truck but can be furnished with plain bearing truck, when so desired. Special features can be furnished as desired, at an additional price. Unless otherwise specified, will be furnished for 18-inch gauge.

Car No.	Cap. in Cu. Ft.	OVER ALL DIMEN., IN.			Bottom In. and Ga.	Sides In. and Ga.	DIMEN. TRUCK, IN.			
		18-in. Lth.	24-in. Ga.	Ht.			Wheel Diam.	Axle Size	Wheel Base	
Z-12	11.7	47	28	33	37 1/8	10	12	10	1 1/2	16
Z-14	14	47	28	33	41 1/8	10	12	10	1 1/2	16
Z-16	16	49	30	33	41 1/8	3/8	10	10	1 1/2	16
Z-18	18.3	49	34	34	41 1/4	3/8	10	10	1 3/4	16
Z-20	20	53	34	34	43 1/4	1/4	10	12	1 3/4	18
Z-22	22.5	59	34	34	43 3/8	1/4	12	12	2	18
Z-28	28.1	59	34	34 1/2	50	1/4	3/8	12	2 1/4	18

Prices upon application.

**Leadville Type Ore Cars**



This car is commonly known as the "Leadville Type."

It is well braced and regularly mounted on a cast iron machined grooved, dirt proof and grease lubricated turntable. It can, however, be furnished mounted on a wrought steel turntable as illustrated. The

door is operated, and the car locked to keep from dumping by the lever on the rear.

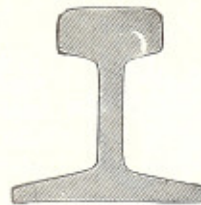
Truck frame is oak, well ironed and braced. The oak acts as a cushion between the body, load, and the running gear.

Regularly fitted with roller bearing truck but can be equipped with plain bearing truck if so desired. Unless otherwise specified, it will be furnished in 18-inch gauge. Bumpers, coupling chains, hooks, etc., can be added when desired at an additional price.

Car No.	Cap. in Cu. Ft.	OVER ALL DIMEN., IN.			Bottom In. and Ga.	Sides In. and Ga.	DIMEN. TRUCK, IN.			
		18-in. Lth.	24-in. Ga.	Ht.			Wheel Diam.	Axle Size	Wheel Base	
T-14	14	47	28	33	41 1/8	3/8	10	10	1 1/2	16
T-16	16	49	30	33	41 1/8	3/8	10	10	1 1/2	16
T-18	18	49	34	34	41 1/4	3/8	10	10	1 3/4	16
T-20	20	53	34	34	43 1/4	1/4	12	12	1 3/4	18
T-22	22.5	59	34	34	43 3/8	1/4	12	12	2	18
T-28	28	59	34	34 1/2	50	3/8	3/8	12	2 1/4	18

Prices upon application.

**Steel Rails**



Wt., Lbs. per Yard	Height Inches	Width Base Flange Inches	Width Head Inches	Thickness Web Inches
8	1 9/16	1 9/16	2 5/16	3/16
12	2 5/16	1 3/4	2 9/16	3/16
16	2 7/8	2	2 3/4	3/16
20	2 43/64	2 1/4	2 11/16	3/16
30	3 11/64	2 3/4	2 11/16	3/16
40	3 59/64	3 3/8	2 11/16	3/16

Prices upon application.

**Splice Bars**

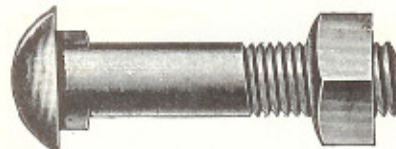


Rail Used Pounds	SPLICES		Bolt Inches	Dist. bet. Center of Holes, In.	Wt., Lbs. per Pair
	Length Inches	Thickness Inches			
8	16 1/8	7/16	1 1/2 x 3/8	4x4 1/8 x 4	2
12	16 1/8	3/8	1 3/4 x 1/2	4x4 1/8 x 4	3.44
16	16 1/8	3/8	1 3/4 x 1/2	4x4 1/8 x 4	4.36
20	16 1/8	3/8	2 x 1/2	4x4 1/8 x 4	4.86
30	16 1/8	7/16	2 x 3/4	4x4 1/8 x 4	7.36
40	20	1/2	3 x 25/32	5x5 1/8 x 5	11.56

Prices upon application.

**Track Bolts**

**Oval Neck—Square Nuts**



Size.....inches	3/8x1 1/2	1/2x1 3/4	1/2x2
Approximate No. per Keg of 200 Pounds.....	1740	1600	900
Size Rails, per Yard.....pounds	8	12 & 16	20
Size.....inches	2 1/32x2 1/2	2 5/32x3	.....
Approximate No. per Keg of 200 Pounds.....	485	285	.....
Size Rails, per Yard.....pounds	30	40	.....
Price.....per pound	.....	.....	.....

**Track Spikes**

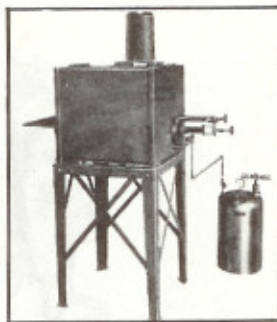


Size.....inches	5/16x2 1/2	3/8x2 1/2	3/8x3
Approx. No. per Kg. 200 Lbs....	2260	1625	1400
Size Rails, per Yard.....pounds	8 & 10	.....	12 & 14
Size.....inches	3/8x3 1/2	1/2x3 1/2	1/2x4
Approx. No. per Kg. 200 Lbs....	1248	760	642
Size Rails, per Yard.....pounds	16 & 18	20	25 & 30
Size.....inches	1/2x4 1/2	1/2x5	5/16x5 1/2
Approx. No. per Kg. 200 Lbs....	586	487	340
Size Rails, per Yard.....pounds	35	40	45 & 48
Price.....per pound	.....	.....	.....
" Reverse Point Spikes.....	.....	.....	.....

### LABORATORY FURNACES, Denver Muffle Type (Gasoline) Assay



Front View Denver Assay Furnace  
Muffle Type for Gasoline



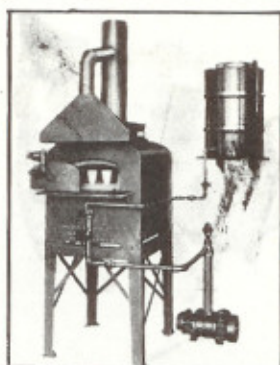
Side View Denver Assay Furnace  
Muffle Type for Gasoline

Model No.	Crucible Capacity		Cap. Gas. Gals.	Outside Muffle Dimensions, Inches			Floor Space Inches		Ship. Wt., Lbs.
	No.	Size		l.	w.	h.	l.	w.	
481	6	10 Gram	5	10	6	4 1/2	13	18	185
483	8	20 Gram	10	12	8 1/2	5 1/2	20	21	570
484	15	20 Gram	10	16	10 3/4	6	23	24	720
485	20	20 Gram	10	18	15	7	28	28	885

### LABORATORY FURNACES, Denver Muffle Type (Oil) Assay



Type 4411 Denver Assay Furnace  
Muffle Type for Oil—Low Pressure



Type 4411 Denver Assay Furnace  
Muffle Type, Medium Pressure for Oil

Model No.	No. Muffles	Cap. 20 Gm. Crucibles	Outside Muffle Dimensions, Inches			Floor Space Inches		Low Pressure Motor Blower		Ship. Wt., Lbs.	Med. Press. Ship. Wt., Lbs., Belt Dr.
			l.	w.	h.	l.	w.	Type	H.P.		
4410	1	18	20 1/2	12 1/4	8	32	28	125	1/2	2180	1910
4410	2	35	20 1/2	12 1/4	8	32	57	250	1 1/2	2705	3435
4410	3	54	20 1/2	12 1/4	8	32	86	250	1 1/2	5890	5715
4411	1	24	21	14 3/4	7 3/8	32	30	125	1/2	2400	2130
4411	2	48	21	14 3/4	7 3/8	32	63	250	1 1/2	4385	4115
4411	3	72	21	14 3/4	7 3/8	32	93	250	1 1/2	6310	6135
4412	1	30	25	17 1/4	9 1/8	34	33	250	1 1/2	2670	2400
4412	2	60	25	17 1/4	9 1/8	34	68	250	1 1/2	4960	4650
4412	3	90	25	17 1/4	9 1/8	34	103	250	1 1/2	7080	6950

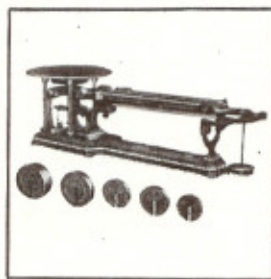
### MERCURY, Denver



Denver Mercury Flasks

MERCURY for use with Amalgam Plates and Barrels, Ball Mills, Clean-Up Pans, etc. can be furnished at the prevailing market price. Specially designed metal containers can be supplied in a number of convenient sizes. These metal containers avoid spillage and breakage and can be easily transported. Large flasks contain 75 pounds and smaller sizes, 5, 10, or 25 pounds of mercury.

### LABORATORY SCALES, Denver Solution and Pulp

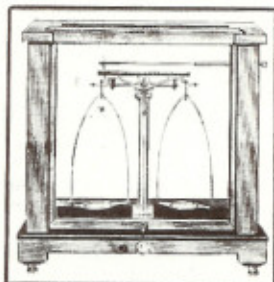


Denver Solution and Pulp Scale

DENVER Solution Scales are designed particularly for the compounding of liquids in the laboratory where scales must be built to withstand rapid handling, mechanical shock, and considerable wear from frequent use. Denver Laboratory Scales meet these requirements and retain utmost sensitivity.

They are provided with two weighing beams with sliding poises, the large beam graduated from 0 to 1000 grams and the smaller from 0 to 100

### LABORATORY BALANCES, Denver Analytical



Denver Analytical Balance

THESE BALANCES have a capacity of 200 grams and are sensitive to 1/10 mg. The beam is of aluminum alloy, 6" long, graduated in 50-1/5 mg. divisions on each side of zero. Two 10 mg. riders are furnished. Pans are chrome plated, 2 1/2" in diameter, controlled by an independent arrest with a locking push button. The mahogany case has a counterpoised door, leveling screws, spirit level. Size 16 1/2" x 9 1/2" x 15 1/2". Shipping weight 30 lbs.

### LABORATORY BALANCES, Denver Pocket Assay



Denver Pocket Assay Balance

DENVER POCKET Assay Balances are accurate precision instruments designed to fold up into compact wood cases which also accommodate the weights and pincers. When raised, the lid supports the beam from which the saucer shaped pans are suspended. When the box is closed, its dimensions are 6" x 2 3/4" x 1 1/2". Weighing capacity is 10 grams, sensitivity 1/4 mg. The instrument is furnished with a set of weights, 10 grams x 1 mg.

### PANS, Denver Hand Gold



Standard Gold Pan

GOLD PANS are essential in testing gold deposits and can be furnished in either the all steel Standard Pan or the Copper-Bottomed Pan. The latter is made of steel with a copper bottom and forms an excellent amalgamating unit when coated with mercury.

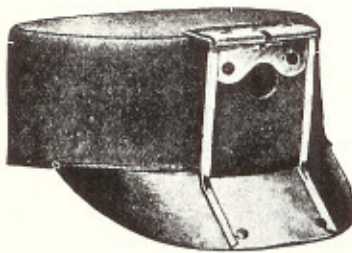
These pans are made in a standard diameter of 16" and weigh 2 pounds. However, various diameters can be supplied on special orders.

### AMALGAMATION PLATES, Denver

All plates are carefully wrapped in blankets and then boxed to prevent damage in shipment.

Plate Size	Approx. Plate Thickness	Dimensions		Shipping Wt., Lbs.		
		l.	w.	1 oz. Ag. per Sq. Ft.	1 1/2 oz. Ag. per Sq. Ft.	2 oz. Ag. per Sq. Ft.
No. 1	1/8"	48"	52"	120	121	122
No. 2	1/8"	48"	54"	122	123	124
No. 3	1/8"	96"	52"	240	241	242
No. 4	1/8"	96"	54"	244	246	248

**No. 9 Coal Miners' Caps**



No. 9 white cap of heavy special shrunk white duck, flannel lined. Visor of heavy material covered with white duck; will not be affected by dampness. Lamp-holder of 2X tin interlined with vulcanized fibre. No. 9 brown cap same as white, but made of brown duck, and the visor is of heavy material covered with Black Glazed oilcloth.

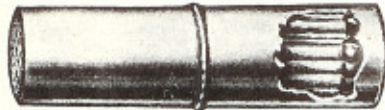
Either white or brown cap can be furnished with leather or long oil visor, if desired. Prices upon application.

**Justrite Carbide Flasks**



Made of heavy tin, double seamed, strong, durable.  
Oval shape, size 6 3/4 x 2 x 3 inches.  
Has large opening and empties freely.  
Price, No. 23, with Screw Cap..... \$ .15

**No. 75 Justrite Waterproof Match Boxes**



Round, seamless brass, nickel-plated. Size 2 7/8 x 1 1/8 inches.  
Price, No. 75.....each \$ .10

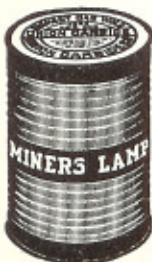
**Justrite Carbide Cans**



Made of light steel, tin coated, ribbed, double seamed and sliding cover, air tight, concaved to fit the boot or hip pocket. Holds full day's supply. Strong and durable. The most convenient and safest carbide supply can on the market. Will not rust.

No.	Description	Price Each
77	Capacity, 10 Ounces Carbide.....	\$ .15

**Miners' Lamp Union Carbide**



25-pound Drum

Specially selected and perfectly adapted for use in miners' lamps on account of its high gas yield, special selection, uniform size and freedom from dust.

Packed in substantial steel, blue and gray, 100 and 25-pound drums. Each drum is equipped with a screw-top which can easily be replaced in position.

Miner's Lamp Union Carbide is also supplied in 2-pound cans. Each can is equipped with a compression top which can be easily replaced in position.

Prices upon application.

**"E-Z" Welding Compound**



Used between laps of welds for welding all grades of steel.

Pounds ....	1	5	10	25
Packages ...	Box	Box	Box	Box
Per Lb. ....	.22	.15	.15	.14
Pounds ....	50	100	300	600
Packages ...	Box	Drum	1/2 Bbl.	Etl.
Per Lb. ....	.14	.13 1/2	.13 1/2	.13

**Oxweld Welding Supplies**



**Oxweld Fluxes**

Oxweld Cast Iron, Brass, Bronze, Copper and Malleable Iron fluxes are packed in 1-lb. cans.

Oxweld Aluminum fluxes come in handy 1/4-lb. cans.

Price per Lb. in Quantities of—

	1/4	1-9	10-49	50-99
Ferro Flux (for Cast Iron).....	.75	.70	.50	
Brazo Flux for Brass, Bronze, Copper or Malleable Iron.....	.85	.80	.65	
Cast Aluminum Flux for Aluminum Castings.....	.50	2.00	1.80	1.60
Sheet Aluminum Flux for Sheet Aluminum.....	.60	2.40	2.20	2.00

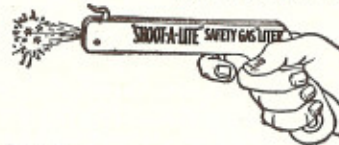
**No. 4 "Braz-Cast" Flux**



For bronze welding cast iron "Braz-Cast" Flux enables the welder to do many cast iron jobs, such as cylinder blocks, etc., without dismantling or preheating the casting, thereby saving considerable time, as well as gas.

Price, Packed in 1 lb. flat oblong cans....per Lb. 1.50

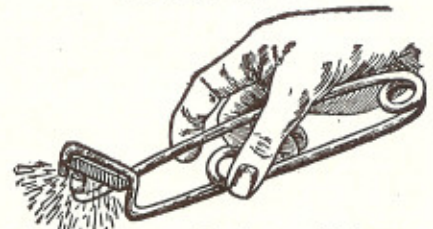
**Shoot-A-Lite Liters**



Lights inflammable gases, alcohol, acetylene, and canned heat. Shoots a brilliant spark at each pull of trigger. N. P. steel case.

No. S .....	Each	.50
No. SF, Extra Renewal Flints.....	Each	.10

**Fuller Lighters**



Used for lighting gas torches and stoves. Flat file will give long and satisfactory service. Saves matches and time, and eliminates danger when lighting the torch. Lights 2,000 times. Each renewal good for 2,000 times.

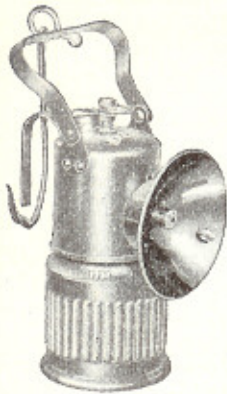
Price .....	Each	.15
" Renewals .....	Two	.15

**Haynes Stellite Welding Rods**

A special alloy for hard surfacing by the oxy-acetylene welding process. Offers great resistance to abrasion. Welding rods made in 3/16, 1/4, 5/16 and 3/8-inch diameters, varying in length from 6 to 14 inches.

Prices and Complete Specifications on Application

**No. 206 Dew-R-Lite Carbide Mine Lamps**



This lamp is made of brass and is corrosion proof, as well as proof against acid waters.

Has an improved water feed.

This lamp makes it possible to make examination and see objects as far distant as 150 feet, while at the same time, it brilliantly illuminates the surrounding area.

Burning capacity, 9 hours on one charge.

Height to lamp top, 6½ inches.

Height to bail top, 9¾ inches.

Weight, 23 ounces.

Price, No. 206.....each ....

**No. 205 I T P Mine Lamps**

This lamp has a water tank and carbide container of extra heavy drawn steel, water lid and valve parts of brass.

It is fitted with a No. 7 nickel silver reflector, 3½ inches in diameter by ½ inch deep.

The reflector is equipped with a spark lighter.

This lamp will burn for 9 hours on one charge of carbide.

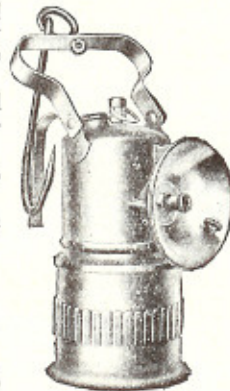
Projects light beam 50 feet.

Height to lamp top, 6½ inches.

Height to bail top, 9¾ inches.

Weight, 19 ounces.

Price, No. 205.....each \$4.50



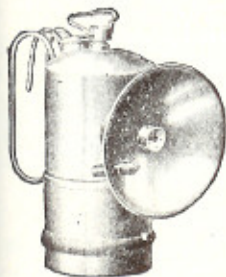
**No. 160 I T P Mine Superintendent's Lamps**

Made of brass, nickel-plated and highly polished. It is fitted with No. 6 reflector—this is made of nickel silver, easily polished. The No. 7 reflector measures 3½ inches in diameter by ½ inch deep, and is equipped with a sparker lighter.

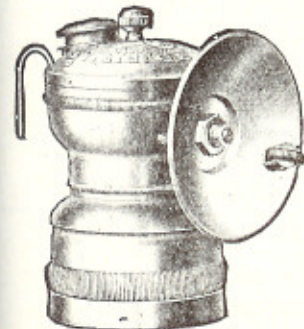
This lamp is made entirely of non-magnetic metal, can be used when reading a transit without deflecting the needle. Lamp is fitted with hinged wire handles and hook—can be used as a hand lamp or suspended by hook. Lamp is regularly equipped

with patented wind shield, making it wind and concussion proof. Lamp is 5¼ inches in height, weighs 11 ounces and will burn for 6 hours on one filling of carbide.

Price, No. 160.....each \$4.00



**No. 30 Dewar Carbide Cap Lamps**



This lamp is light in weight, is equipped with float feed and sparker lighter.

The reflector is made of a special aluminum alloy.

The flame burns steadily, without flicker or flare, and during operation the lamp requires no attention, excepting to keep it supplied with carbide and water.

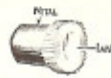
Each lamp is furnished with a detachable cap clip.

Height of lamp, 3¼ inches.

Burning capacity, 3 hours.

Highly polished nickel finish. Weight each, 5 ounces.

Price, No. 30.....each \$1.00



**Sun-Ray Burners**

Made of brass, with lava insert. Easy to take out of lamp or replace.

Price.....per dozen \$ .40

**No. 76 Windshield**

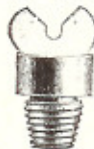
This windshield makes lamp wind, drip and shot proof. It makes the lamp immune to the strongest air currents met with in mines. The shield as well protects the flame from overhead drip.



Price, No. 76.....per dozen \$1.50

**Replacement Parts**

Part No.	Part Name	PRICE, EACH	
		Cap Lamps	Hand Lamps
2	Wire Rods.....	\$ .10	\$ .06
3	Water Tank Lid.....	.10	.10
5	Burner Tubes.....	.10	.10
10	Strainers.....	.05	.05
13B	Carbide Containers.....	.25	.75
15	Valves Complete.....	.30	.25
16	Valve Stems Only.....	.15	.10
17	Bail and Hook.....	.....	.50
18	Hook for Bails.....	.....	.15
19	Coil Spring Slide Tubes.....	.....	.15



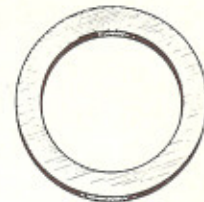
**Twin Jet Flat Flame Burners**

Can be furnished in ¼, ½ or ¾-foot size.

Price.....each \$ .15

**No. 12 Dewar Red Rubber Gaskets**

This gasket is made under the manufacturer's special formula and contains little sulphur. It will remain soft and pliable for many years. Packed 12 in a box.



Price, No. 12, for Cap Lamps.....per dozen \$ .25

Price, No. 12, for Hand Lamps.....per dozen 1.20

**Strainer Felts**

Chemically Tested

Price, for Cap Lamps, 1½ Inches in Diameter.....per dozen \$ .30

Price, for Hand Lamps, 1¾ Inches in Diameter.....per dozen .35



**No. 62 Burner Cleaners**



Wires can be used as brush to remove surface dirt, or a single wire used separately to clean

the gas outlet. Made for all lamps.

Price, No. 62.....per dozen \$ .65

**No. 65 Reamers**

Imported Swiss Steel—For All Burners



Twelve reamers can be furnished packed in metal nickel-plated tube.

Price, Reamers Only.....per dozen \$ .40

Price, per Tube and 12 Reamers..... .45

Price, Empty Tubes.....per dozen .50

**Sparkers and Parts**



No. 8C Screw Cap



No. 8 Sparker Complete

MWW

No. 8B Spring

Price, No. 8, Sparker Complete.....per dozen \$1.25

Price, No. 8B, Sparker Spring.....per dozen .20

Price, No. 8C, Sparker Screw Cap.....per dozen .35