

# Copper Manual



COPPER MINES,  
COPPER STATISTICS, COPPER SHARES

AND

A Summary of Information on Copper, Etc.

BY

D. HOUSTON & CO.

METAL BROKERS

NEW YORK

---

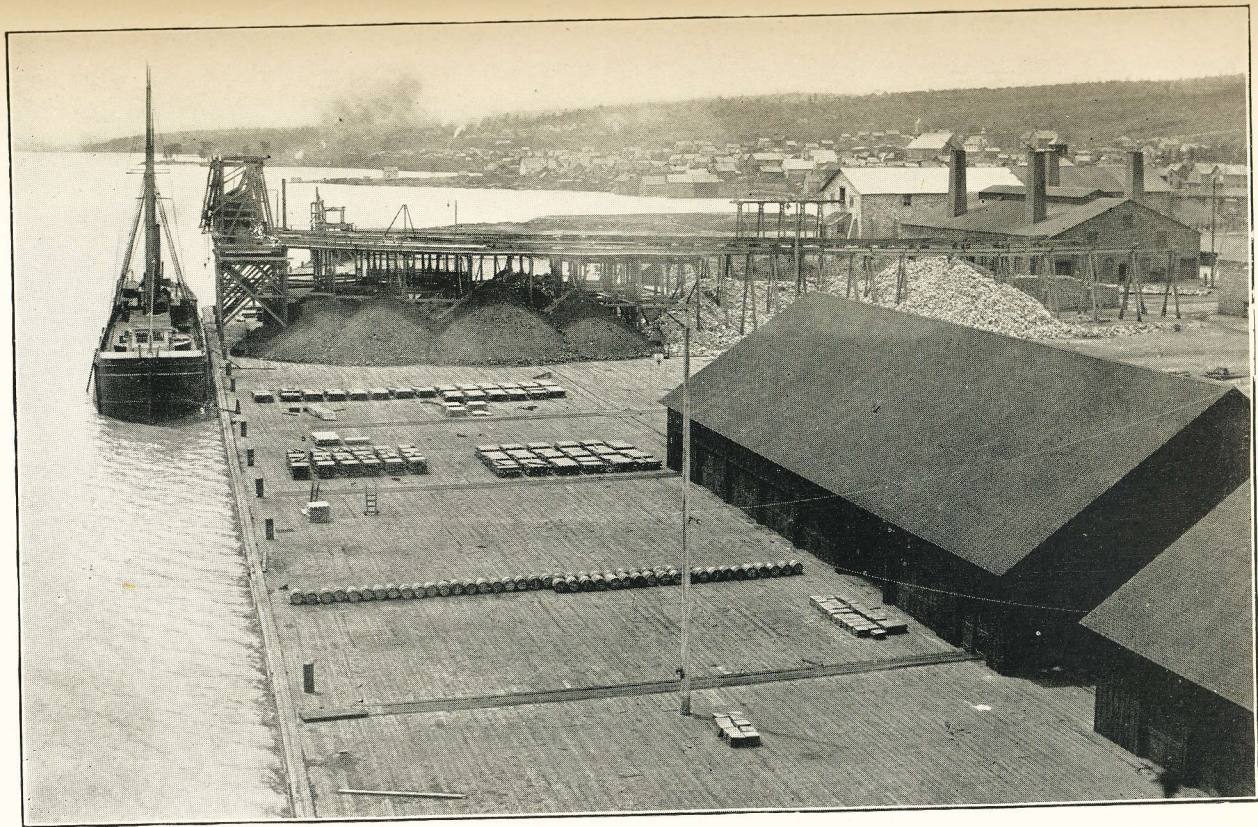
.... VOLUME 2 ....

---

D. HOUSTON & CO., Publishers

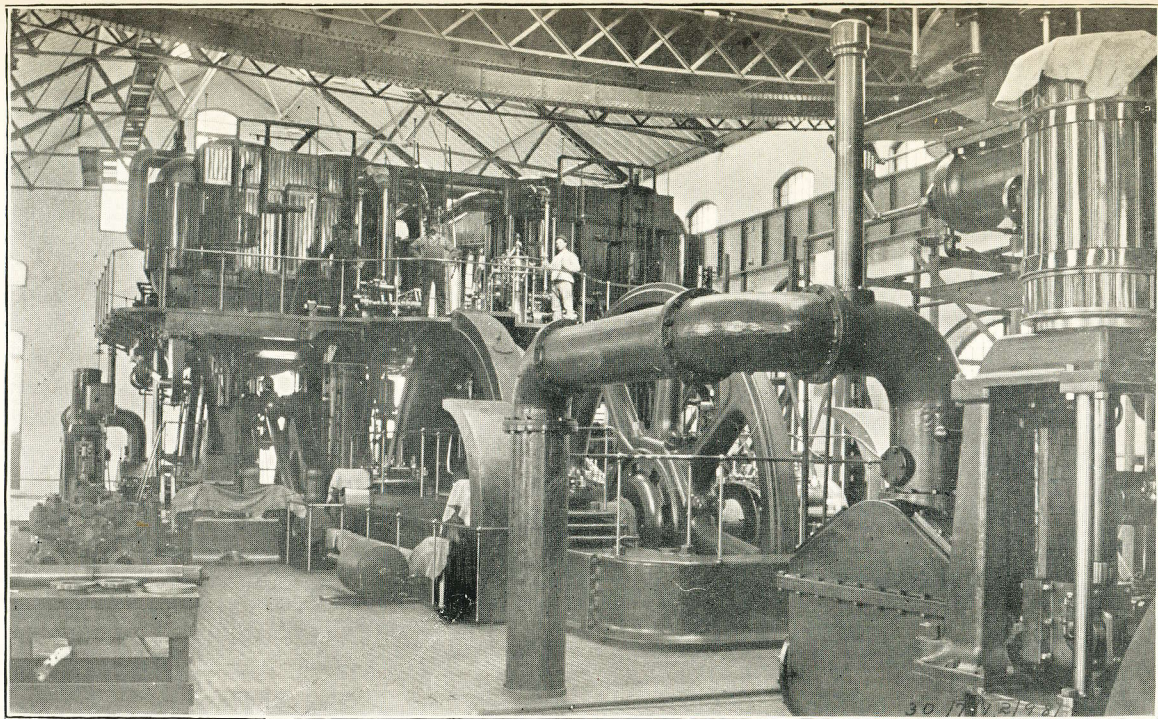
New York

1899



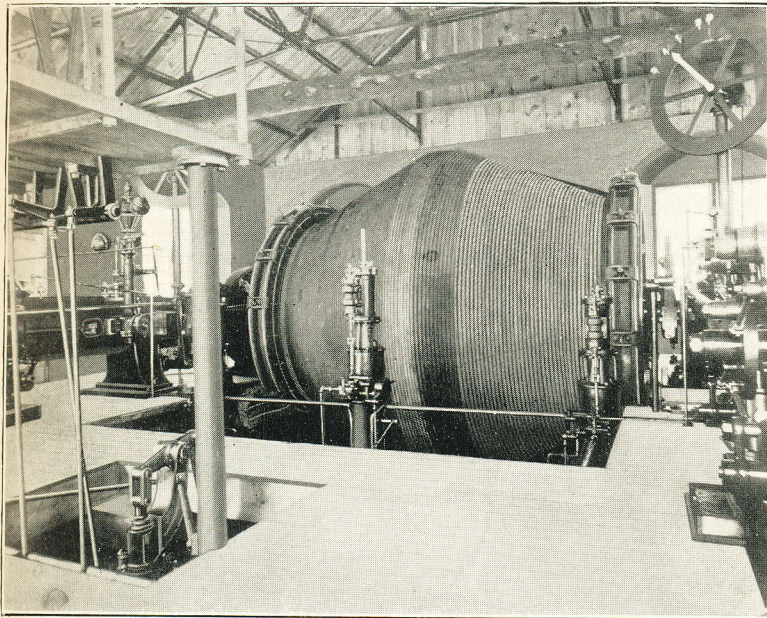
CALUMET & HECLA SMELTING WORKS, SOUTH LAKE LINDEN, MICH.



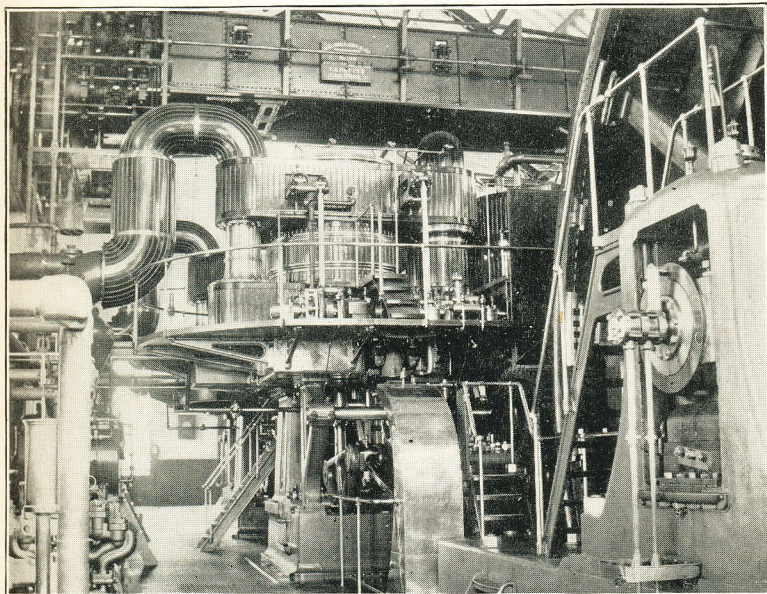


ENGINES MINONG AND SISKOWIT, RED JACKET SHAFT. CALUMET & HECLA MINE.



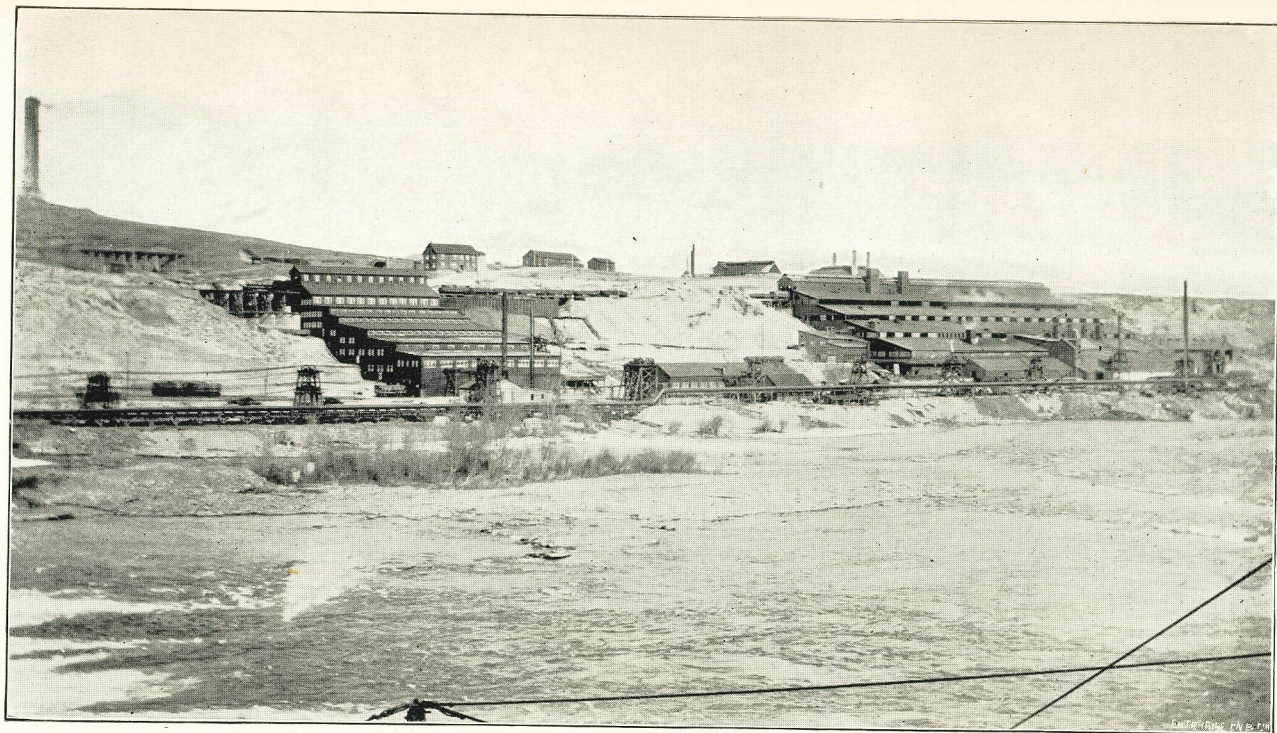


CORLISS HOISTING ENGINE, WITH DOUBLE CONE DRUM, AT "A" SHAFT OF ATLANTIC MINING COMPANY.



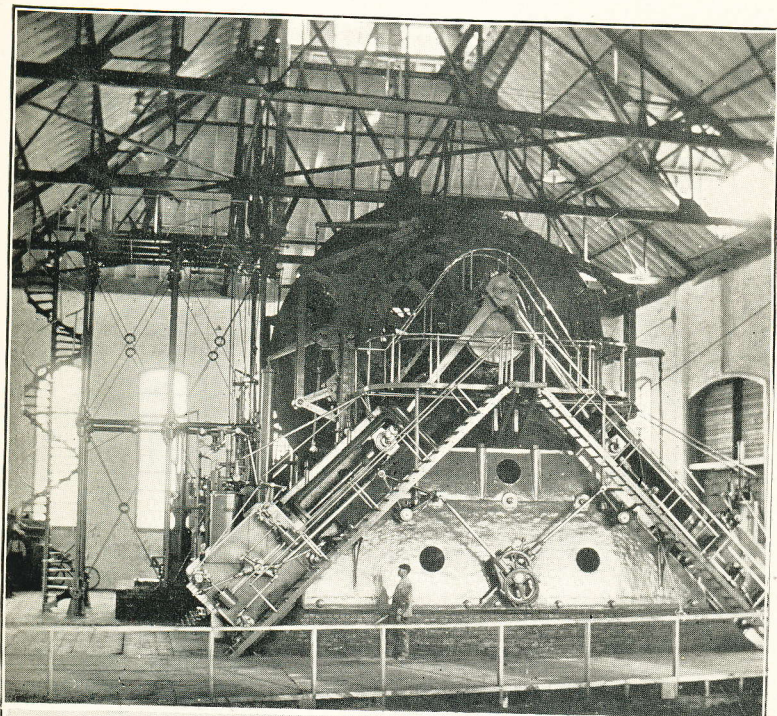
ENGINES HANCOCK AND PEWABIC. HOISTS FROM NOS. 7 AND 8 SOUTH HECLA, CALUMET & HECLA MINE.





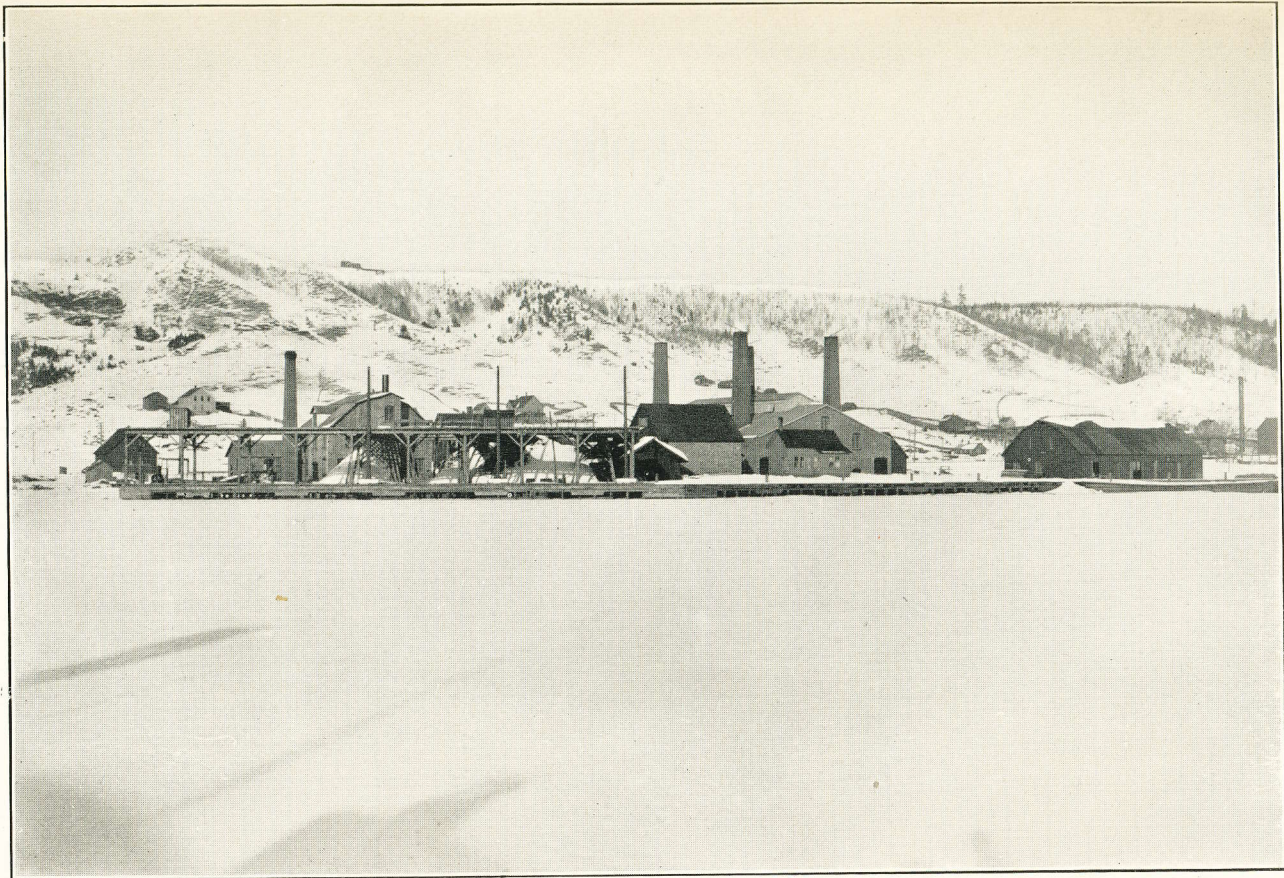
SMELTER OF THE BOSTON & MONTANA CONSOLIDATED COPPER AND SILVER MINING COMPANY, GREAT FALLS, MONTANA.





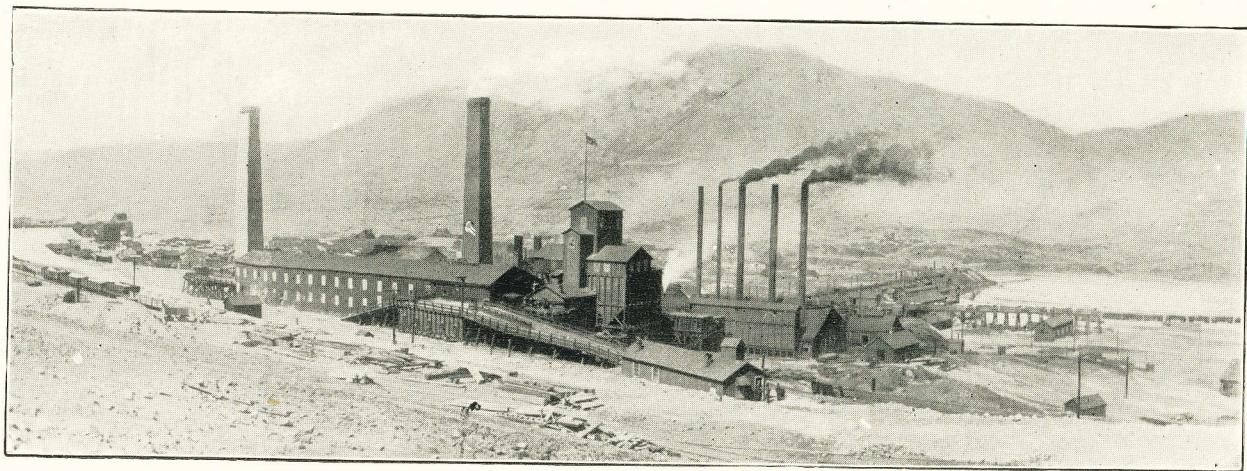
1. NO. 5 HOIST AT TAMARACK MINE.  
2. TAMARACK STAMP MILL.





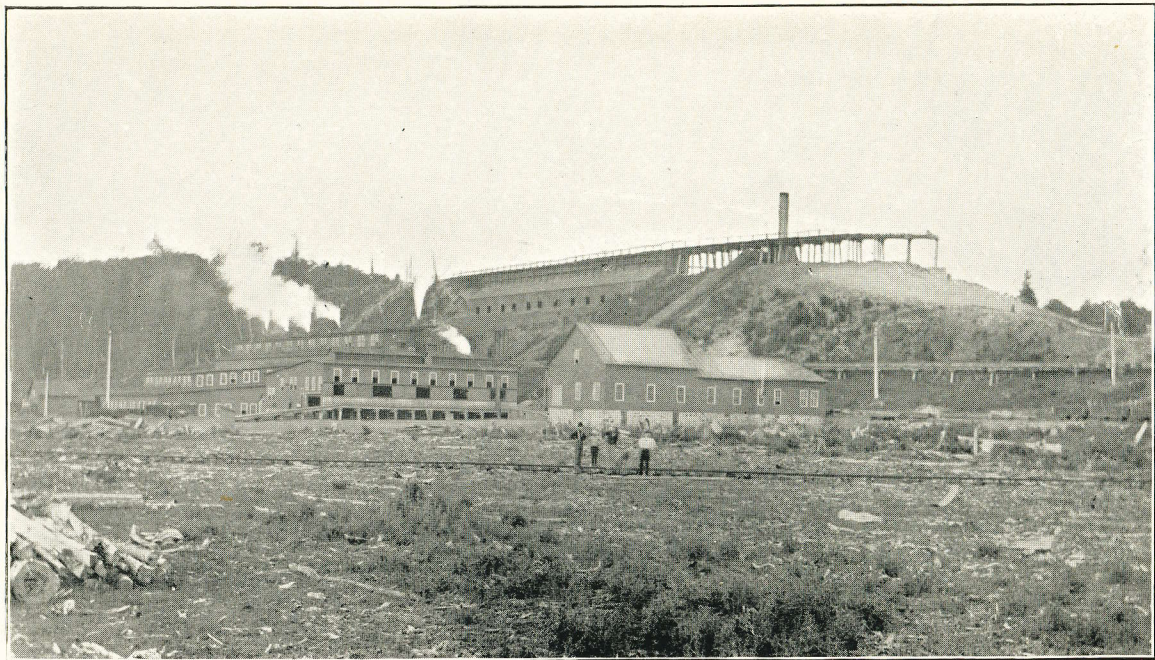
QUINCY SMELTING WORKS, HANCOCK, MICHIGAN.





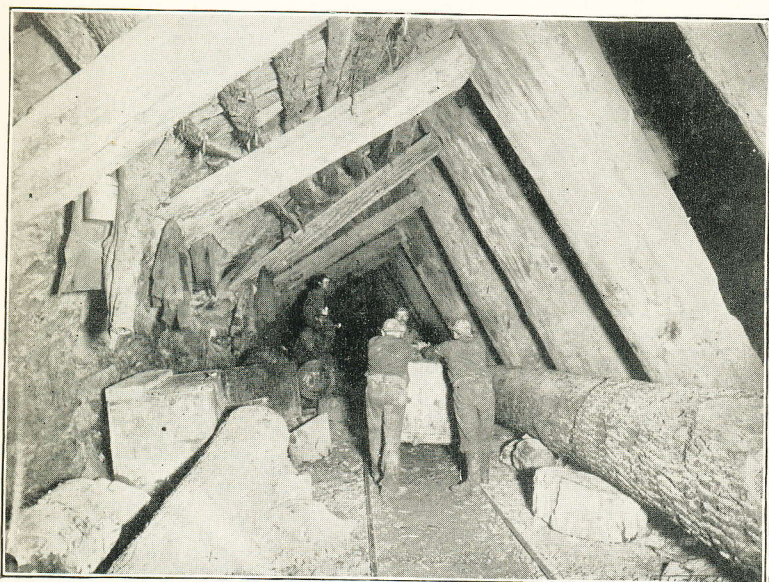
SMLTER OF THE MONTANA ORE PURCHASING COMPANY AT BUTTE, MONTANA.



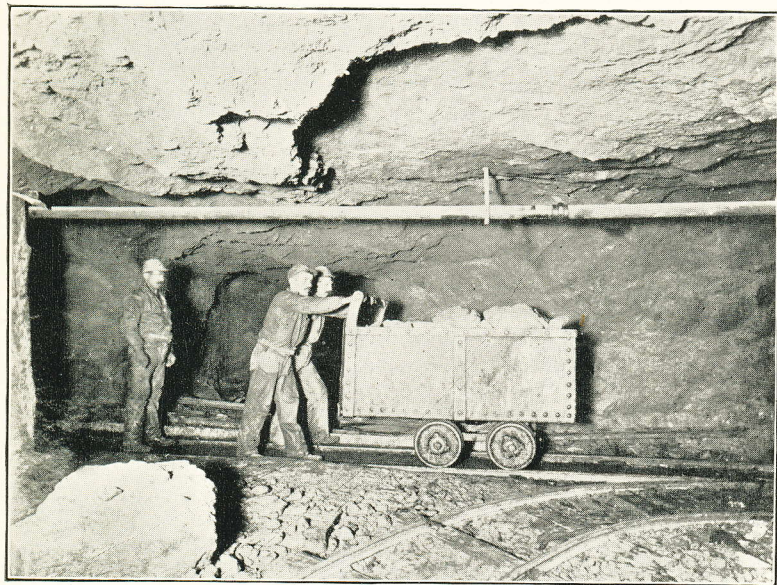


STAMP MILL OF ATLANTIC MINING COMPANY, LAKE SUPERIOR, MICH.





TAMARACK MINE.



TAMARACK MINE. TRAMING TO THE SHAFT.





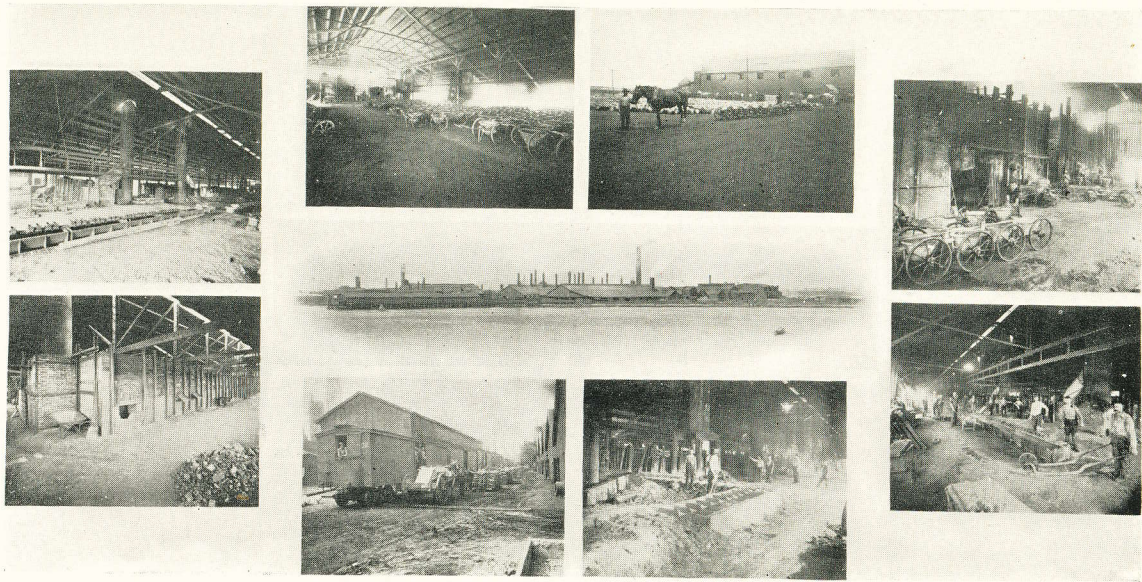
LONDON METAL EXCHANGE.





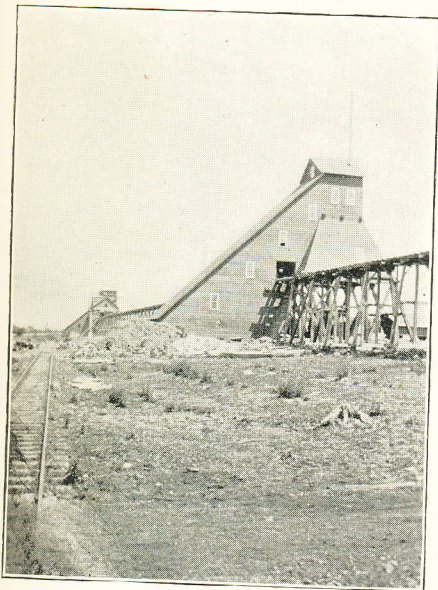
1. QUINCY MINE SHAFT.  
2. ARCADIAN SHAFT HOUSE.



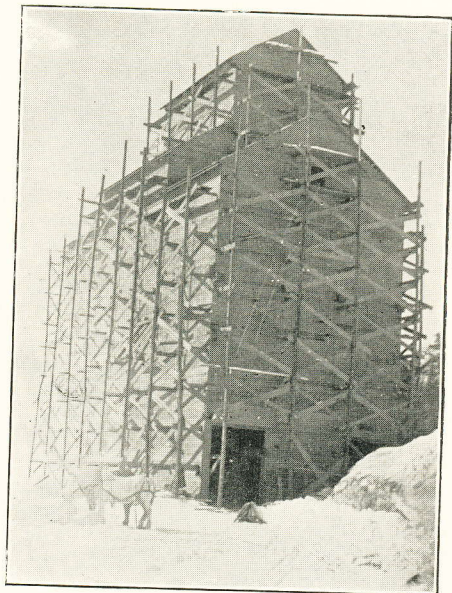


WORKS OF THE ORFORD COPPER COMPANY AT CONSTABLE HOOK, N. J.





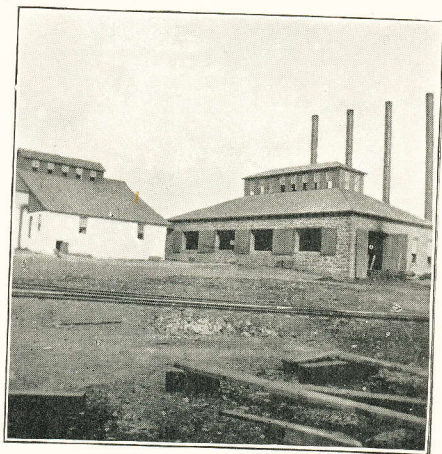
B & C SHAFT HOUSES, ATLANTIC MINE.



BALTIC MINE SHAFT HOUSE.

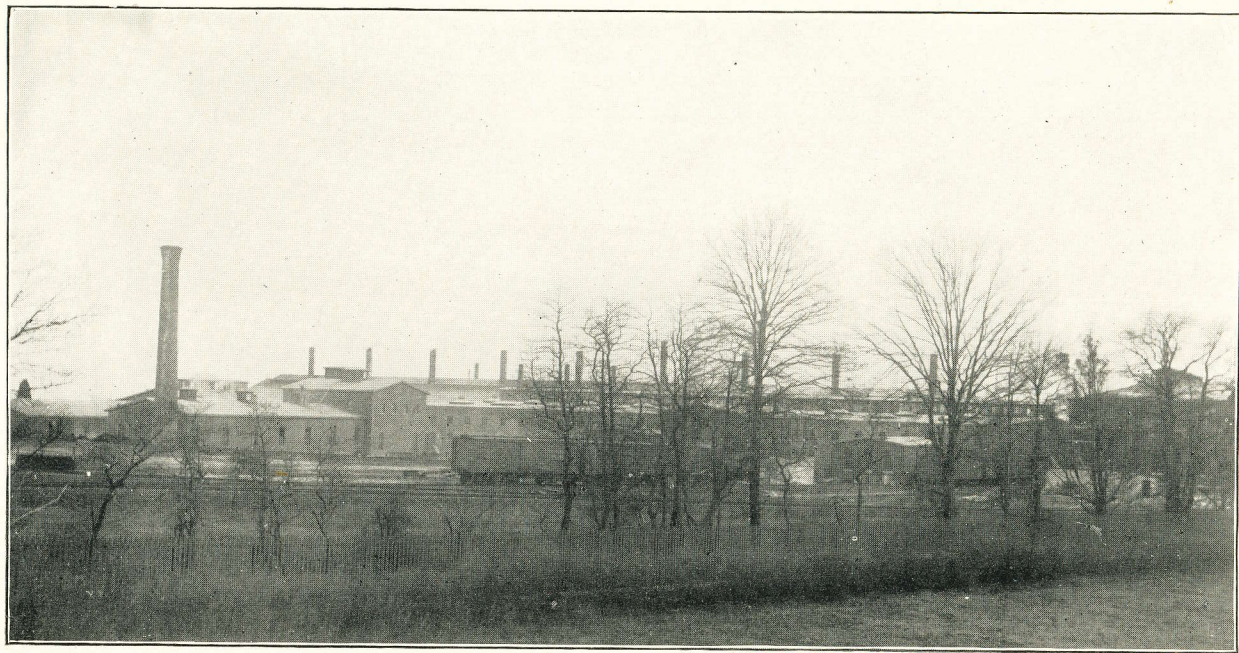


HOIST AND COMPRESSOR HOUSE,  
WOLVERINE MINE.



800 H. P. BOILER PLANT, NEAR D SHAFT,  
ATLANTIC MINE.





RARITAN COPPER WORKS, PERTH AMBOY, N. J.



Montana Ore ....  
Purchasing Co.

F. AUG. HEINZE, Pres. and Gen'l Manager.  
 JOHN MacGINNISS, Vice-President.  
 ARTHUR P. HEINZE, Secretary.  
 STANLEY GIFFORD, Treasurer.

Authorized Capital, \$2,500,000.

Issued, \$2,000,000.

---

Purchasers, Smelters  
 and Refiners of

Copper, Silver  
 .....AND  
Gold Ores.....

---

Smelting Works: Butte, Mont.

Offices :

Butte, Mont., and \* \* \* \* \*  
 100 Broadway, New York.



# Quincy Mining Co.

EASTERN OFFICE

**45 Broadway,  
New York City.**

THOMAS H. MASON, President.  
CHAS. J. DEVEREAUX, Vice-President.  
WM. R. TODD, Secretary and Treasurer.  
W. A. O. PAUL, Assistant Secretary and Treasurer.



MINE OFFICE:

**Hancock, Michigan.**

SAMUEL B. HARRIS, Agent. E. D. JOHNSON, Clerk.  
THOMAS WHITTLE, Mining Captain.

---

## THE ORFORD COPPER CO.

ROBERT M. THOMPSON, PRESIDENT.

99 JOHN ST.,  
....NEW YORK.

---

### COPPER AND NICKEL SMELTERS.

WORKS AT CONSTABLE HOOK, N. J.

OPPOSITE NEW BRIGHTON, STATEN ISLAND.

Copper and Nickel Ore, Mattes or Bullion Purchased.

Advances Made on Consignments for Refining and Sale.

SPECIALTY MADE OF SILVER-BEARING  
ORES AND MATTES.

COPPER INGOTS, WIRE BARS  
AND CAKES.

MALLEABLE NICKEL, SHOT, PLATES, INGOTS, BARS, SHEETS, WIRE.

Best Quality for ANODES, GERMAN SILVER AND NICKEL-STEEL FOR ARMOR PLATES.



UNION COPPER  
MINING CO. 

GOLD, COPPER, . . . .  
SILVER AND LEAD.

---

---

MINES SITUATED AT GOLD HILL,  
NORTH CAROLINA.

---

---

MAIN OFFICE :

80 BROADWAY, NEW YORK.

---

---

WALTER G. NEWMAN, PRESIDENT.

WM. M. BUTLER, TREASURER.



# The Plume & Atwood Mfg. Co.,

MANUFACTURERS

Sheet and Roll Brass,  
and Wire and Rods....

Brass Goods in Great Variety. 



....Rolling and Wire Mills,....

THOMASTON, CONN.

Factories: WATERBURY, CONN.

Stores: NEW YORK, BOSTON AND CHICAGO.

## Copper and Gold Mines.

We own and control Copper and Gold Mines in Seven Devils and other prominent mining camps of Idaho, Washington, Oregon and Nevada. . . .

Awarded Gold Medal for the finest general Mineral Exhibit at the Idaho Inter-Mountain Fair, September 25th-30th, 1899. . . . .

Prospectus sent free upon application.

Correspondence solicited.

Reference: Capital State Bank, Boise, Idaho.

## Consolidated Mines, Limited,

BOISE, IDAHO.

M. U. MCKINLEY,  
SECRETARY.

WM. MCKINLEY,  
PRESIDENT AND TREASURER.



# Copper Ring of Arizona.

---

...OFFICES...

33 WALL STREET, NEW YORK CITY.  
AMES BUILDING, WASHINGTON ST.,  
CORNER COURT ST., BOSTON, MASS.



Mines at  
BARRETT, BISBEE AND  
SOLOMON SPRINGS.

Smelting Works at BARRETT.  
Central Mining Office, TOMBSTONE.

## COCHISE COUNTY, ARIZONA.



...DIRECTORS...

THOS. F. GAYNOR - - - - - NEW YORK.  
W. H. MACK - - - - - NEW YORK.  
N. McCONAUGHY - - - - - NEW YORK.  
H. A. STEARNS - - - - - RHODE ISLAND.  
WM. A. WASHBURNE - - - - - NEW YORK.



...OFFICERS...

WM. A. WASHBURNE, PRESIDENT. N. McCONAUGHY, VICE-PRESIDENT  
THOS. F. GAYNOR, SECRETARY AND TREASURER.